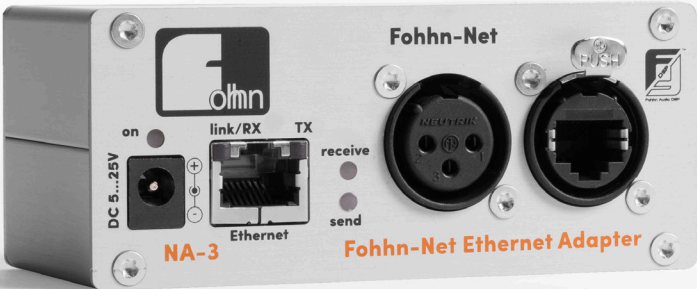




NET REMOTE NA-3

FOHHN-NET ETHERNET ADAPTER



Contents

- 1. Description 3
- 2. First Commissioning 4
- 3. Resetting and updating the NA-3 firmware via the FOHHN-NET Port 6
- 4. Contact Address 6

1. Description

The **NA-3** is a **FOHHN-NET ETHERNET ADAPTER** for integrating **FOHHN-NET** devices into a local, Ethernet-based network. The devices can be controlled from a PC, located in the same LAN as the **NA-3**, using **FOHHN AUDIO SOFT**.

Connections

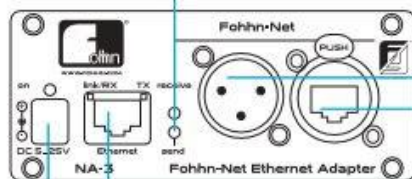
- DC-In socket for power supply
- 10Base-T Ethernet Port
- FOHHN-NET XLR socket and RJ-45 socket

Important: The NA-3 is NOT compatible with networks in which Dante devices or -software will be used. In such networks, the Fohhn ABX-5 will, instead, be required as a FOHHN-NET ETHERNET ADAPTER!

Connections

Fohhn-Net LEDs

send LED (yellow) lights up when data is transferred from the PC
receive LED (green) lights up when data is received.



DC socket

Connection for the required power supply.

Fohhn-Net XLR socket

Fohhn-Net devices can be connected to the Fohhn-Net XLR socket via standard XLR cables or multicore cables via the Fohhn-Net XLR - RJ-45 adapter cable. (See connecting diagram below)

Fohhn-Net RJ-45

Fohhn-Net devices can be connected to the Fohhn-Net RJ-45 socket via RJ-45 patch cable. (See connecting diagram below)

Ethernet socket

The NA-3 is connected with the PC or laptop via the Ethernet connection.

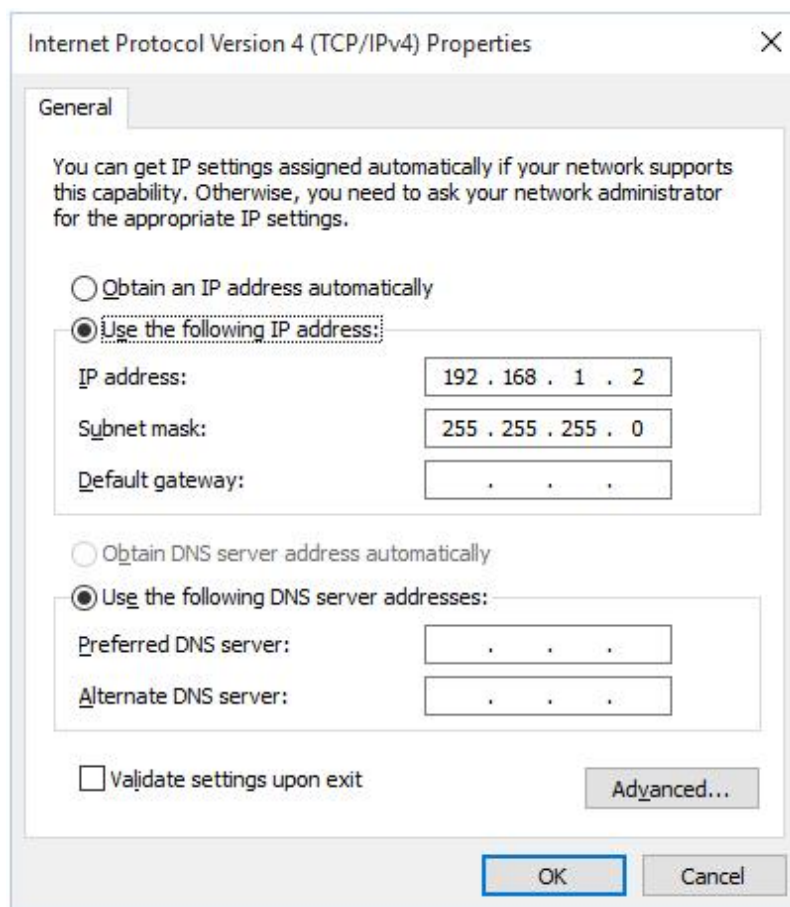
2. First Commissioning

If the **NA-3** is connected to a network with DHCP server, it automatically receives an assigned IP Address from the DHCP server.

If no DHCP server is found after 20 seconds, the **NA-3** will automatically be assigned the following IP Address: **192.168.1.99**

Use an Ethernet cable for connecting the **NA-3** to your PC, either directly or via a switch. If your computer receives no IP Address from a DHCP server, you must assign it a fixed IP Address in the same address range.

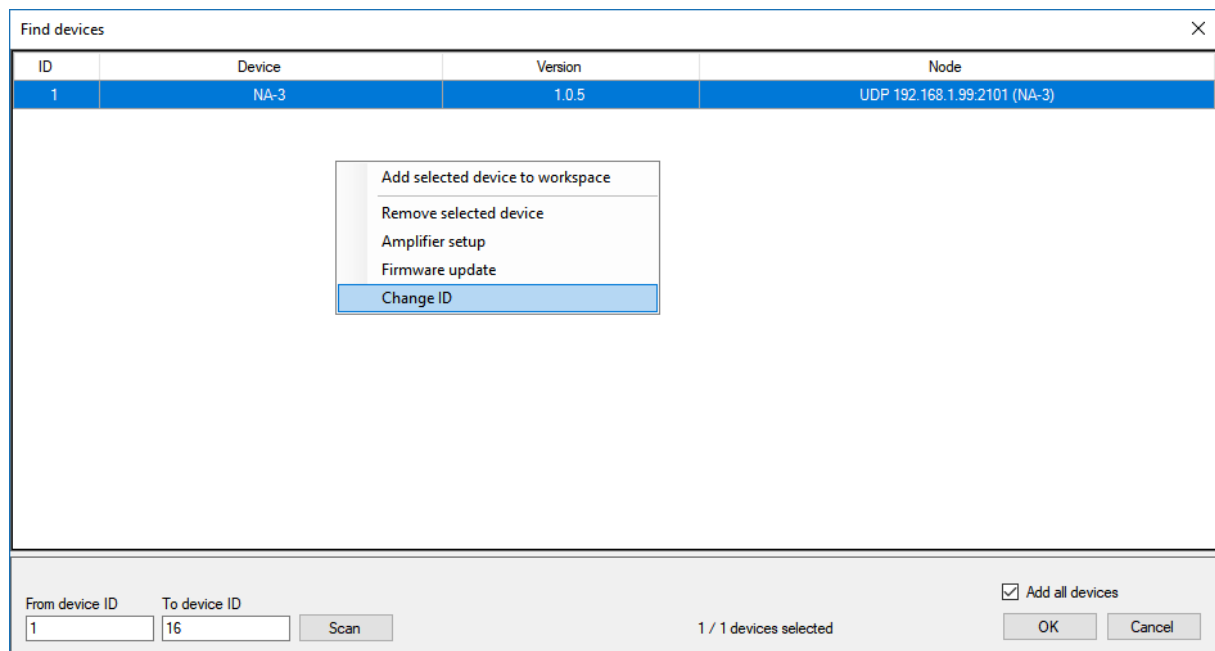
e.g. **192.168.1.2**



With direct connection this is always necessary!

Start **FOHHN AUDIO SOFT** after configuring the network card in Windows and connecting the network cable.

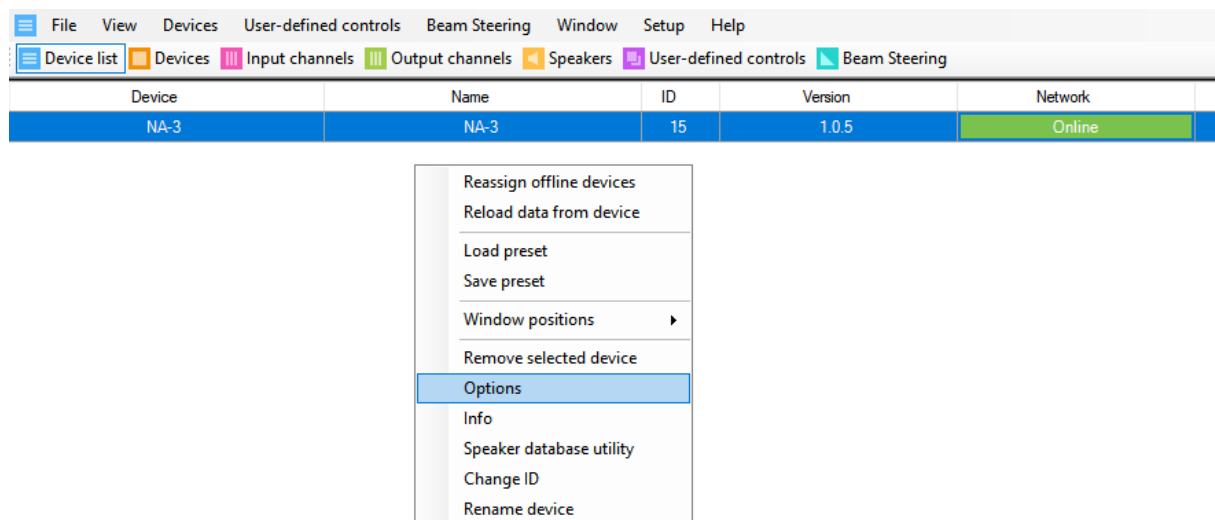
FOHHN AUDIO SOFT finds the **NA-3** automatically: it will be shown in the list like every other **FOHHN-NET** device.



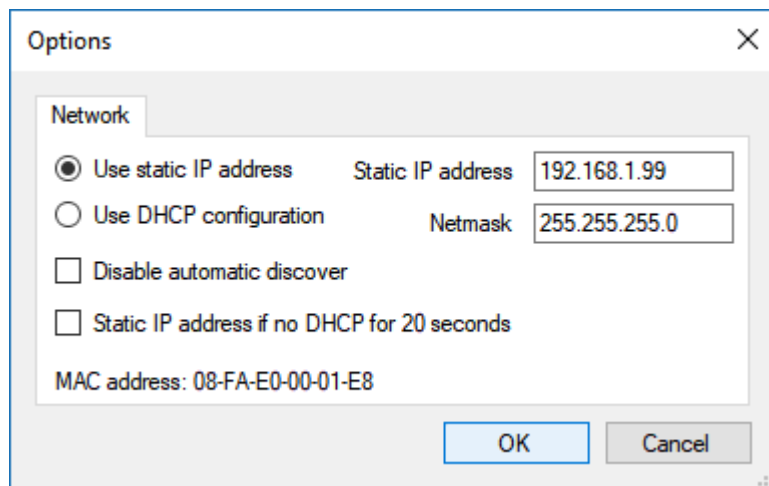
Also like every other device, the **NA-3** uses a **Fohhn-Net** ID. Its factory setting is ID 1. Change the **NA-3**'s ID to one that no other **FOHHN-NET** device is using.

After changing the **FOHHN-NET** ID, confirm the process with **OK**.

The **NA-3** will now be shown in the **FOHHN AUDIO SOFT** *Device List*.



Select the **NA-3** in the *Device List*, open the context menu using the right mouse button and choose *Options*.



Assign an appropriate, static IP Address to the **NA-3** and confirm with *OK*.

3. Resetting and updating the NA-3 firmware via the FOHHN-NET Port

You can connect the **NA-3** to an **NA-11** USB adapter, via the **FOHHN-NET** Port, in order to configure it independently from the Ethernet. A firmware update is only possible via the **FOHHN-NET** Port.

4. Contact Address

FOHHN AUDIO AG

Hohes Gestade 3-8
72622 Nürtingen
Germany

Tel. +49 7022 93323-0
Fax +49 7022 93324-0

www.fohn.com
info@fohn.com