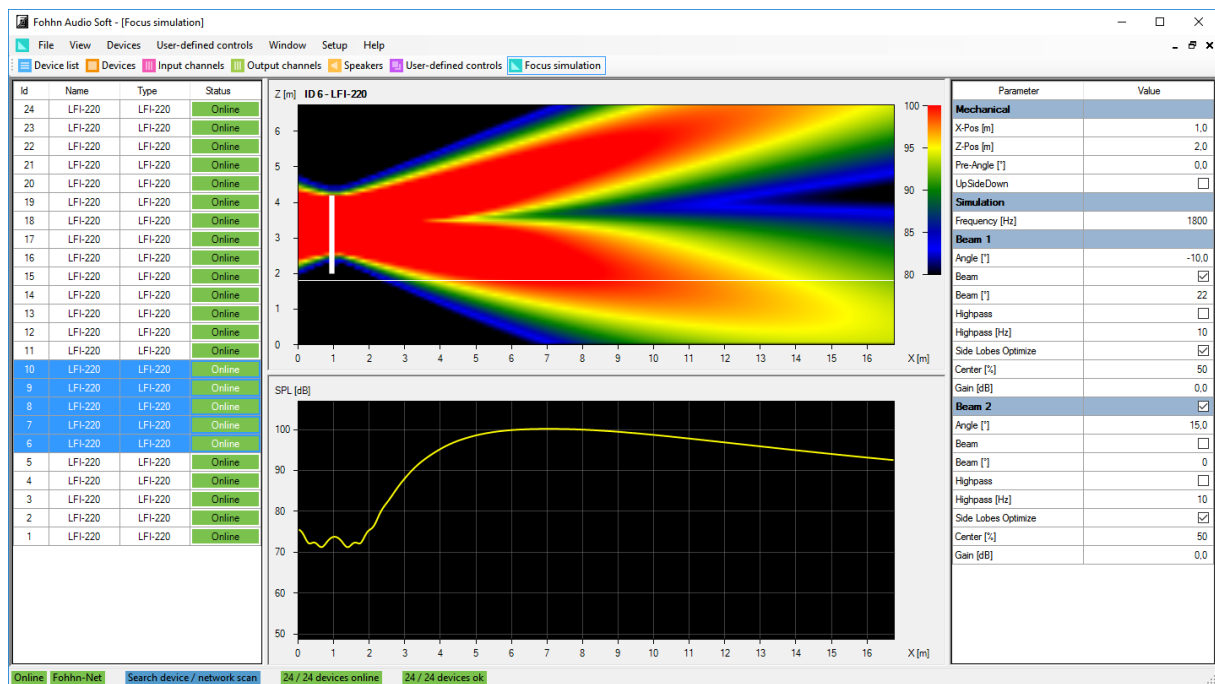


# Fohhn Audio Soft

One software to control all processes



## User Manual



Please read this manual carefully before using the software and keep it for future reference.

## Contents

1. Welcome .....	5
2. Introduction .....	5
2.1 What is Fohhn Audio Soft? .....	5
2.2 What is the Fohhn Audio DSP? .....	6
2.3 What is Fohhn-Net? .....	6
2.4 System Requirements .....	7
2.5 Download und Installation .....	7
3. The Software User Interface .....	8
3.1 The Menu Bar .....	8
3.1.1 File .....	8
3.1.2 View .....	8
3.1.3 Devices .....	9
3.1.4 User-defined Controls .....	9
3.1.5 Window .....	10
3.1.6 Setup .....	10
3.1.7 Help .....	10
3.2 Status Bar .....	11
3.3 Views .....	11
3.3.1 Device List .....	11
3.3.2 Devices .....	12
3.3.3 Input and output channels .....	12
3.3.4 Speakers .....	14
3.3.5 User-defined Controls .....	14
3.3.6 Beam Steering .....	15
3.4 Context Menus .....	16
3.4.1 Device List .....	16
3.4.2 Devices .....	16
3.4.3 Channels .....	17
3.4.4 Speakers .....	18
3.4.5 User-defined Controls .....	19
3.4.6 Beam Steering .....	19
4. Operation .....	20
4.1 Fohhn-Net Setup .....	20
4.1.1 Starting the Software .....	20
4.1.2 Configuration Using Multiple Nodes .....	21
4.1.3 ID Allocation .....	23

4.2 Presets .....	24
4.3 System Setup .....	25
4.4 Settings for Devices, Channels and Speakers .....	25
4.4.1 Renaming Devices .....	25
4.4.2 Rename Channels .....	25
4.4.3 Arranging the Loudspeakers and Devices .....	26
4.4.4 Combine Speakers (Focus Modular only) .....	26
4.5 DSP Functions .....	27
4.5.1 Volume .....	27
4.5.2 Routing .....	27
4.5.3 Delay .....	28
4.5.4 X-Over .....	28
4.5.5 Equalizer .....	28
4.5.6 Graph .....	29
4.5.7 Dynamics .....	29
4.6 Status .....	30
4.7 Beam Steering and Focus Simulation .....	31
4.7.1 Definition .....	31
4.7.2 Focus Simulation Parameters .....	32
4.7.3 System Setup (Focus-Series) .....	32
5. Advanced Operation .....	34
5.1 Creating Groups .....	34
5.2 Routing .....	35
5.3 User-defined Controls .....	36
5.4 Sub Arrays .....	40
5.4.1 Guidelines .....	40
5.4.2 Subwoofers as a Combined Speaker .....	40
5.5 Preset Management .....	42
5.5.1 Exporting Presets .....	42
5.5.2 Import Presets .....	42
5.6 Projects .....	43
5.6.1 Save Project as .....	43
5.6.2 Load Project .....	43
5.7 Identifying a Fohhn-Net Device .....	44
5.8 Signal Generator .....	44
5.9 Changing a Fohhn-Net ID .....	44
6. Appendix .....	45

6.1 Updating Your Firmware .....	45
6.2 Amplifier Setup .....	46
6.3 Shortcuts/Hot Keys .....	47
6.3.1 General Shortcuts .....	47
6.3.2 Shortcuts for the <i>Input-/Output Channels</i> view context menu .....	48
6.3.3 Shortcuts in the <i>Routing</i> dialog .....	48
6.4 Troubleshooting .....	49
6.5 Remote Configuration .....	50
6.6 Password Lock .....	51
6.6.1 Setting a Password Lock .....	51
6.6.2 Cancelling Password Lock .....	52
6.6.3 Password Reset (if password is forgotten) .....	52
6.7 Disclaimer and Copyright .....	52
6.7.1 Disclaimer .....	52
6.7.2 Copyright .....	52
6.8 Trademarks .....	53
6.9 Contact Address .....	53

# 1. Welcome

Congratulations on purchasing **Fohhn** products and thank you for trusting in our systems.

**Fohhn Audio Soft** acts as a control centre for all the DSPs that are built into our active devices. These DSPs include all the necessary functions for carrying out high-quality, professional audio processing.

To maximize the potential of your **Fohhn** products and to guarantee trouble-free operation, we recommend reading the following manual carefully before using your system. We also suggest keeping this information to hand for the benefit of future users.

Please take time to read the following instructions carefully and thoroughly, even if you are already an experienced user.

## 2. Introduction

### 2.1 What is Fohhn Audio Soft?

**Fohhn Audio Soft** is a software application for Windows-based PC that forms the control centre of your **Fohhn** System. Its user interface gives software access to the DSPs (digital signal processors) that are built into all active **Fohhn** devices, enabling the remote control of all parameters and functions needed for professional, high-quality audio processing.



At the same time, **Fohhn Audio Soft** also enables the management and control of up to 254 active **Fohhn** devices, giving you constant feedback on both the status of the connected devices and their respective parameter values.

## 2.2 What is the Fohhn Audio DSP?

As a user, the **Fohhn Audio DSP** gives you instant access to all the functions needed for fast, efficient and of course excellent-sounding audio processing.

The **Fohhn Audio DSP** consists of two separate digital signal processors that are built into all of **Fohhn**'s active hardware devices (loudspeakers, amplifiers and controllers): The first Audio DSP is used for calculating high-quality signal processing functions. This enables you – with help from **Fohhn Audio Soft** – to delve into the various parameters and actively shape the sound characteristics of the **Fohhn** loudspeaker systems. The second DSP takes care of the loudspeaker management.

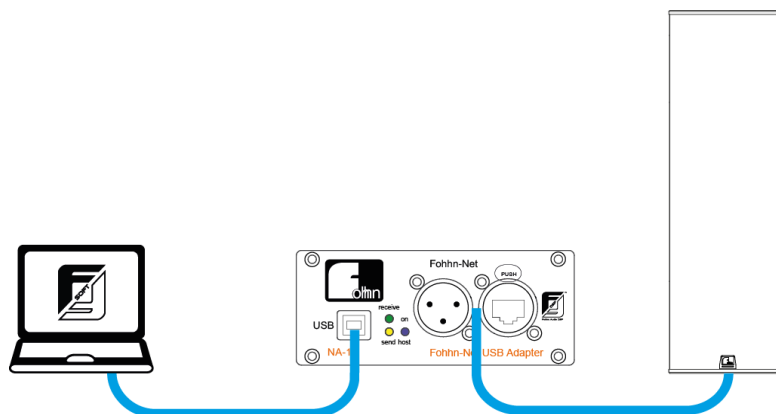
Any **Fohhn** loudspeaker systems equipped with **Fohhn Beam Steering Technology** can be controlled using **Fohhn Audio Soft**.

A database for all **Fohhn** loudspeakers is also available via the **Fohhn Audio DSP**. This enables all current loudspeaker systems to be registered in **Fohhn Audio Soft**, so that a loudspeaker setup can be configured with minimum effort.

## 2.3 What is Fohhn-Net?

Communication between **Fohhn Audio Soft** and the **Fohhn Audio DSP** takes place via **Fohhn-Net**. Using this proprietary network, instructions entered on the software interface are transmitted to the hardware. The returning feedback from the hardware is then displayed in **Fohhn Audio Soft**. In order to achieve successful communication, all components in the system are allocated a specific ID number. This way, every component can be individually addressed: **Fohhn-Net** enables up to 254 IDs to be assigned.

However, **Fohhn Audio Soft** cannot address the various pieces of system hardware directly. For this a **Fohhn-Net Adapter** is required – known as *Node* in the **Fohhn Audio Soft** – which can translate the relevant information. Fohhn currently offers the **NA-1/NA-11** (USB) **Fohhn-Net Adapters** and the **NA-3** (Ethernet) **Fohhn-Net Adapter**. The adapter links the computer to the **Fohhn** hardware, enabling successful system communication to take place.



Basic Fohhn-Net cabling

For more complex systems you can use more than one Node in your **Fohhn-Net** setup: **Fohhn Audio Soft** allows simultaneous use of the **NA-11** (max 3 units), **NA-3** (max 127 units) and **NA-1** (max 1 unit).

Wiring up your **Fohhn-Net** is described in the **Fohhn-Net Adapter** and **Fohhn** hardware (loudspeaker, amplifier and controller) manuals.

## 2.4 System Requirements

To use **Fohhn Audio Soft**, you need a commercially available PC with the following spec:

- Computer and processor: x86- or x64 multi-core processor
- Random access memory (RAM): 4 gigabyte (GB) RAM
- Harddisk: 40 megabyte (MB) of free space
- Display: minimum resolution 1366 x 768
- Operating system: Microsoft Windows 7 SP1 or Windows 10
- .NET version: Microsoft .NET Framework 4.6.1
- Additional requirements: current update status of the operating system
- a free USB Port

## 2.5 Download und Installation

The current version of **Fohhn Audio Soft** can be downloaded for free from **[www.fohhn.com](http://www.fohhn.com)**

When a software update is available, carry out the following steps in order to install the new version of **Fohhn Audio Soft** on your computer:

1. Download the new version of **Fohhn Audio Soft** to your computer.
2. Find the file *Fohhn\_Audio\_Soft\_x.x.x\_Setup.exe* on your computer (x.x.x will denote the actual version number).
3. Run the installer program by double-clicking on the file: Follow the on-screen instructions.
4. Click on *Install* to install the program on your computer. Also confirm this in the *User Account Control* dialog.
5. To complete the installation click on the *“Finish”* button.

Once installed, the software will be ready to use and can either be opened using the program symbol on the desktop, or via the path *Start > All programs > Fohhn Audio AG > Fohhn Audio Soft*.

### 3. The Software User Interface

The **Fohhn Audio Soft** user interface is divided into different areas. These provide access to the various functions associated with your hardware, allowing you to control these functions or to view their status, so that you have a complete overview of all hardware components at all times. For this purpose, **Fohhn Audio Soft** includes a range of menus and toolbars, as well as interactive GUI (graphical user interface) elements. These will all be described in detail on the following pages.

**Fohhn Audio Soft** includes the following:

1. Menu bar
2. Status bar
3. Views
4. Controls within the views
5. Context menus within the views

#### 3.1 The Menu Bar

Using the menu bar items, you can directly select a particular function, or open a function view in order to access specific actions and context menus.

##### 3.1.1 File

Here you can select from the following menu items:

- **Load Project**  
This lets you load an existing project.
- **Save Project As**  
This lets you save the currently loaded project to a preferred location. Saved projects can be loaded from here at a later date, or exchanged with other users. A project contains the suffix *.fap*.
- **Export Preset To File**  
This lets you export a self-created Preset and save it to a preferred location: The preset will be filed with the suffix *.prst*. It can then be re-imported or exchanged with other users.
- **Import Preset From File**  
This lets you load a Preset to your device.
- **Exit**  
Use this command to end your **Fohhn Audio Soft** session. The last settings you made will remain active in the hardware, even after you have quit the software program, until you next change them using **Fohhn Audio Soft**.

##### 3.1.2 View

Here you can select from the following menu items:

- **Device List**  
This lets you open the *Device List* view, in which all the devices registered in **Fohhn Audio Soft** are displayed.



- **Devices**  
This lets you open the *Devices* view. Here you have direct access to the spatial arrangement and DSP functions of the registered devices.
  - **Input Channels**  
This lets you open the *Input Channels* view. Here you can directly access and manage the DSP functions in the individual channels of each registered device. An input channel will only be displayed here if the device has DSP functions on its input channels.
  - **Output Channels**  
This lets you open the *Output Channels* view. Here you can directly access and manage the DSP functions in the individual channels of each registered device.
  - **Speakers**  
This lets you open the *Speakers* view, where you can enter specific commands relating to any connected **Fohhn** loudspeakers. Here you have direct access to all the DSP functionality in the respective loudspeakers, controllers and power amplifiers.
  - **User-defined Controls**  
This lets you open the *User-defined Controls* view. Here you can create controls for specific functions in grouped devices.
  - **Beam Steering**  
This lets you open the *Beam Steering* parameter pages and display. These pages are only available if you have **Fohhn** hardware with Beam Steering capability.
- Zoom**  
Using the zoom levels in the associated submenu lets you make the current display smaller (50%, 75%), larger (200%) or return it to the standard size (100%).

### 3.1.3 Devices

Here you can select from the following menu items:

- **Add Offline Devices**  
This lets you add new devices (controllers, power amplifiers, loudspeakers) to your system. These devices do not have to be physically connected: They can be virtually added in Offline Mode enabling you to create projects in advance without the hardware.
- **Search Device / Network Scan**  
By selecting *Search* in the *Search Device / Network Scan* dialog, you can search via **Fohhn-Net** for existing system components, as well as those you wish to add into your system. All recognised devices will be displayed in the overview and newly recognised devices can be added into the system. Using the default setting, IDs in the range 1-32 will be scanned, but you can alter this setting as required.

### 3.1.4 User-defined Controls

Here you can select from the following menu items:

- **Add Volume Group**  
In the *Add Volume Group* dialog, you can combine individual channels from various devices to form a group, which can then be controlled using the same volume fader.
- **Add User-defined Controls Window**  
If you have generated a common volume control, or common mute buttons for a group, you can use this option to create a window for these common controls.

### 3.1.5 Window

Here you can select from the following menu items:

- **Cascade**  
This lets you cascade all the individually opened **Fohhn Audio Soft** windows in the GUI work area. If you open another window, this will be displayed in front of the other windows that are already open.
- **Tile Horizontally**  
This lets you combine all individually opened **Fohhn Audio Soft** windows so that they are displayed on top of each other in the GUI work area. If you open another window, this will be added to the horizontal arrangement.  
**Tile Vertically**  
This lets you combine all individually opened **Fohhn Audio Soft** windows so that they are displayed next to each other in the GUI work area. If you open another window, this will be added to the vertical arrangement.
- **Arrange Icons**  
This lets you arrange any minimized windows at the bottom left of the screen just above the Status Bar.
- **Disconnect**  
This lets you release the active window from the main screen, in order to move it to a second monitor for example.
- **Device List/Devices/Channels/Speakers/User-defined Controls/Focus Simulation**  
These individual windows correspond with the items in the *View* menu. They can also be opened using the buttons on the Toolbar.

### 3.1.6 Setup

Here you can select from the following menu items:

- **Language**  
The *Language* dialog lets you switch the user interface between the following languages: English, German, French, Norwegian, Finnish, Polish, and Chinese. You can also open the *Language* dialog directly from the right hand side of the Toolbar.
- **Fohhn-Net**  
The *Fohhn-Net* dialog shows all the currently available **Fohhn-Net Adapters** in the system. You can save the current setup as a configuration, or load a previous configuration.

### 3.1.7 Help

Here you can select from the following menu items:

- **Update Firmware- and Speaker Database**  
In the *Update Firmware and Speaker Database* dialog, **Fohhn Audio Soft** automatically searches the **Fohhn** server for the latest firmware versions for all **Fohhn** devices and updates the Speaker database. This process requires an internet connection. Please note that the files are only downloaded onto your computer and are not transmitted to the connected **Fohhn** devices – that is a separate process. Once the update is finished, *Close* this dialog.
- **About Fohhn Audio Soft**  
This lets you open a dialog containing information on the currently installed version of **Fohhn Audio Soft** as well as on the Speaker database. Close this dialog by clicking *OK*.

## 3.2 Status Bar

The main purpose of this bar is to display the current status of the different hardware devices, as well as that of **Fohhn-Net** network. What's more, using the various views you can actively engage with the system configuration.

- **Online/Offline**

This display shows the online status of all **Fohhn-Net** registered devices: In *Online* mode (green display) communication is possible, in *Offline* mode (red display), it is not. Clicking the display lets you switch between *Online* and *Offline* modes as required.

- **Fohhn-Net**

This display shows the status of the **Fohhn-Net** nodes. If the display is highlighted in green, both the nodes and **Fohhn-Net** are working correctly. If the display is highlighted in red, there is a problem with the nodes that you will need to fix in order for the system to work properly. Click on the display to check the error message in the *Fohhn-Net Configuration* dialog.

- **Search Device / Network Scan**

Click on this display to open the *Search Device / Network Scan* dialog and scan IDs 1 to 32 (default). You can also change the ID filed as required.

- **X/X Devices Online**

This display shows how many devices are included in the setup and how many of these are currently online. Click on the display to open the *Device List* dialog.

- **X/X Devices OK**

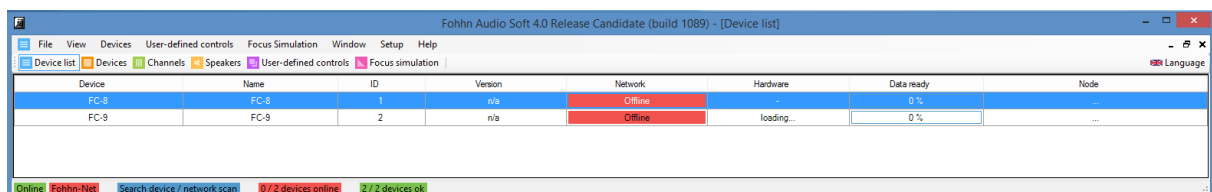
This display shows whether all the devices are functioning properly, or whether there are any problems. You can see at a glance if any of the **Fohhn-Net** devices are not working properly and if so, how many.

## 3.3 Views

The Toolbar gives you instant access to the various **Fohhn Audio Soft** views. According to your personal preferences, you can use one or more of these views as a workspace.

### 3.3.1 Device List

The *Device List* view provides an instant visual overview of all the devices in your **Fohhn-Net** setup. As well as having an overall view of the active devices, you can also see immediately whether they are all working properly and in the event of a malfunction, identify the faulty device.



Device	Name	ID	Version	Network	Hardware	Data ready	Node
FC-8	FC-8	1	n/a	Offline	-	0 %	-
FC-9	FC-9	2	n/a	Offline	loading...	0 %	-

Here you can see all the recognised and registered **Fohhn** controllers, power amplifiers and active loudspeakers that are in the system, together with the following information, which is shown in tabular form:

- **Device:** The **Fohhn** product name is shown here.
- **Name:** The device name created by the user is shown here. If no separate name is added, the entries under *Device* and *Name* will appear identical.
- **ID:** This shows the ID number of the **Fohhn** Hardware in the **Fohhn-Net** setup.

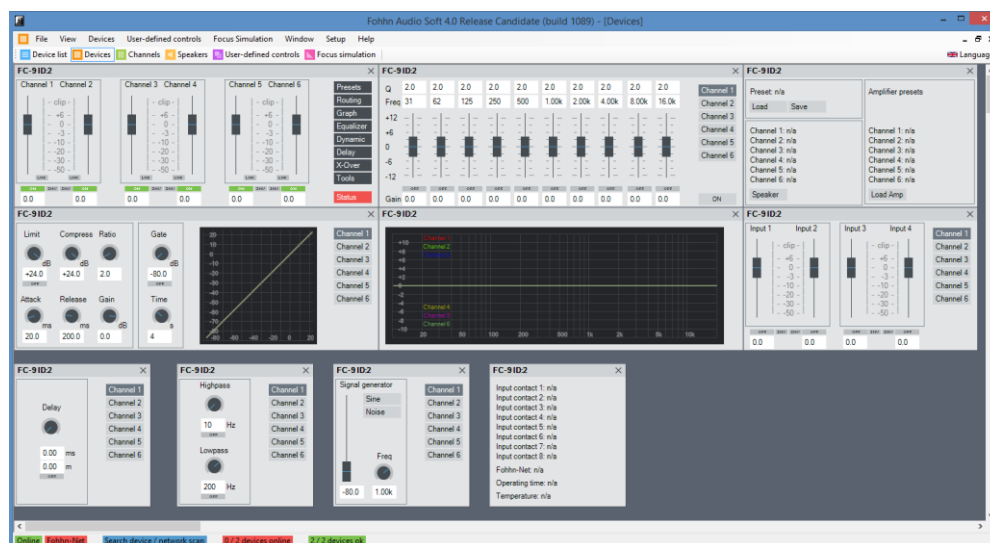
- **Version:** This shows the **Fohhn** hardware's firmware version.
- **Network:** This shows the **Fohhn** hardware's network status (*Online* or *Offline*).
- **Status:** This shows whether the hardware is displaying an error message (Protect switch active, or temperature warning) or is working normally (Status *OK*).
- **Data ready:** This shows whether all the devices' DSP data is correctly read back in **Fohhn Audio Soft**.
- **Node:** This shows the Node / **Fohhn-Net** adapter to which the hardware is currently connected.

Using the context menus in this view you can, for example, load/save presets for a selected device, change the device ID, and rename the device and more.

### 3.3.2 Devices

Here, all the recognised and registered hardware devices in the system are displayed as graphic elements. The title bar of each window shows the name of each device, plus its ID number. Using the respective context menus, you can rename both the devices and their channels. The main window of a device acts simultaneously as its control centre, giving you access to all the DSP functions. Just click on one of the buttons at the right hand side of each device window. This will open another window where you can access the required functions.

A green highlight on a button simultaneously acts as an indicator to show that the relevant DSP function is active.

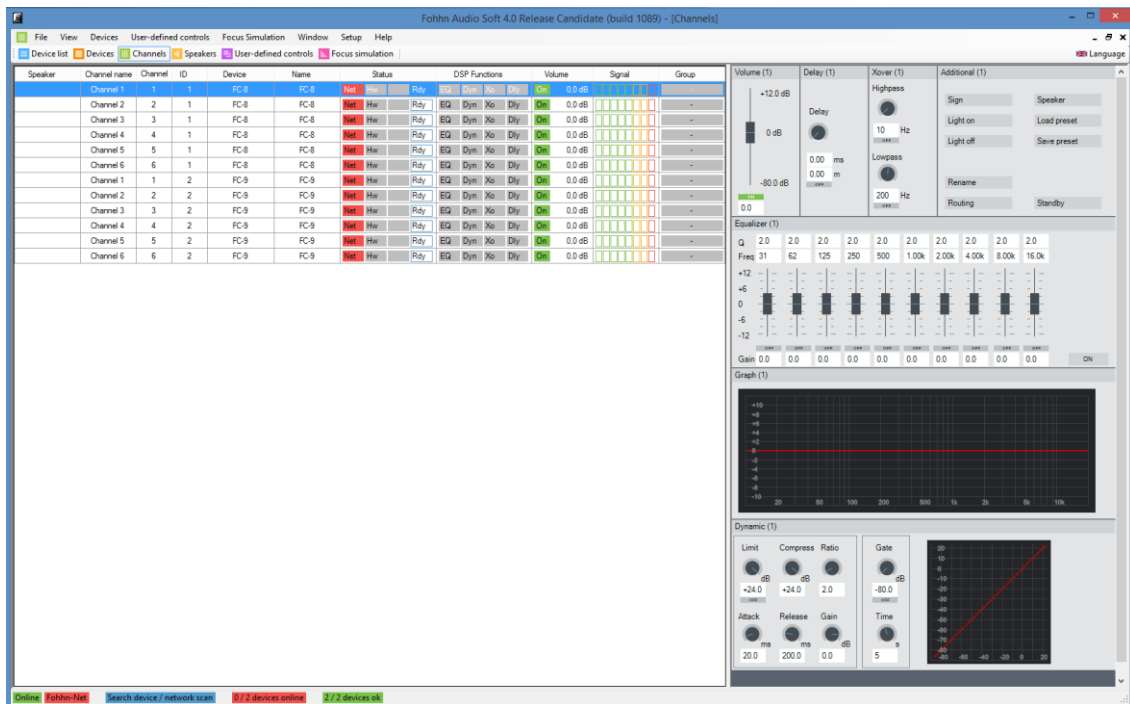


### Selecting Devices

To select a device, simply click on it. At this point, the device name will be displayed in **bold black typeface**.

### 3.3.3 Input and output channels

The left area of this view contains the status information for all channels belonging to the **Fohhn** controllers, power amplifiers and active loudspeakers in your system. Each line corresponds to an individual channel. The controls on the right can be used to adjust the individual DSP functions (EQ, Dynamics etc.) for each of these channels.



The following information is displayed:

- **Speaker:** Here you can see the name of the speaker that is assigned to a respective channel of a controller or power amplifier using a speaker preset.
- **Channel Name:** The name of the respective channel is shown here. In the default settings, channels are named as Channel 1 to x. But you can rename them as required.
- **Channel:** The number of respective channels is shown here.
- **ID:** **Fohhn-Net** ID numbers for the hardware are shown here.
- **Device:** **Fohhn** product names are shown here.
- **Name:** User assigned names are shown here. If no separate user name exists, the entries in *Device* and *Name* will be identical.
- **Status:** The **Fohhn-Net** status of the respective channels is shown here.
- **DSP Functions:** The *ON/OFF* status of the DSP functions *EQ*, *Dynamic*, *X-Over* and *Delay* is shown here.
- **Volume:** The *ON/OFF* status of the channel is shown here, as well as the channel fader's current level value.
- **Signal:** Output levels from -50 dB (green) to +12 dB (red/Clip) are displayed here in the following steps: -50, -30, -20, -10, -3, 0, +6, +12.
- **Group:** If the channel is assigned to a Group, the name of that Group will be shown here.

Using the context menus in this Status view, you can load/save amplifier and loudspeaker presets, rename channels, change volume levels/mute/polarity, create/edit Groups and much more.

The controls to the right of this *Input-/Output channels* view enable you to adjust the channel-related DSP functions. If you want to simultaneously adjust the volume levels on several channels, this is done relative to the existing levels on those individual channels – in this case the relevant volume controls are marked with an R. With other tools (EQ, Dynamics etc.) the newly inserted values are adopted on all channels.

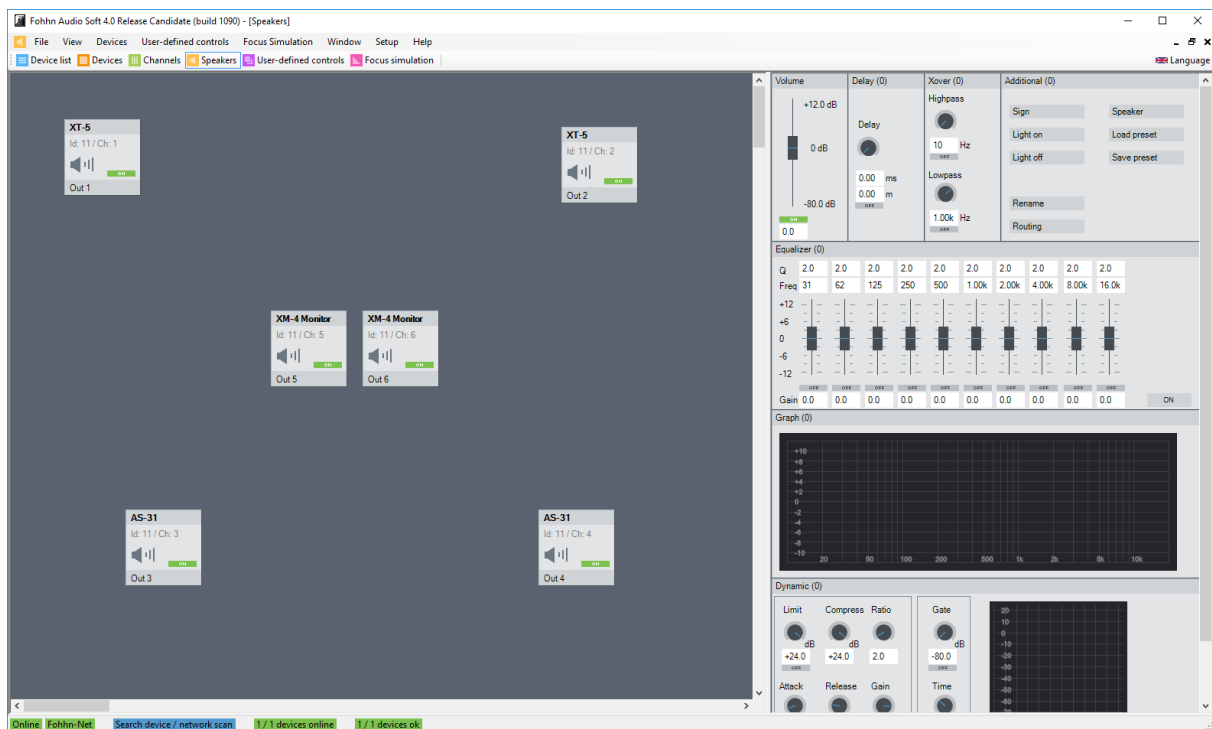
### 3.3.4 Speakers

The left side of this view displays all the **Fohhn** loudspeakers in your system as separately positioned units. Each unit can be moved around on the work surface to correspond with the physical loudspeaker arrangement.

#### *Selecting a Speaker*

In order to adjust a loudspeaker parameter, you must first select the speaker. Simply click on the relevant loudspeaker. The speaker symbol will turn a dark grey.

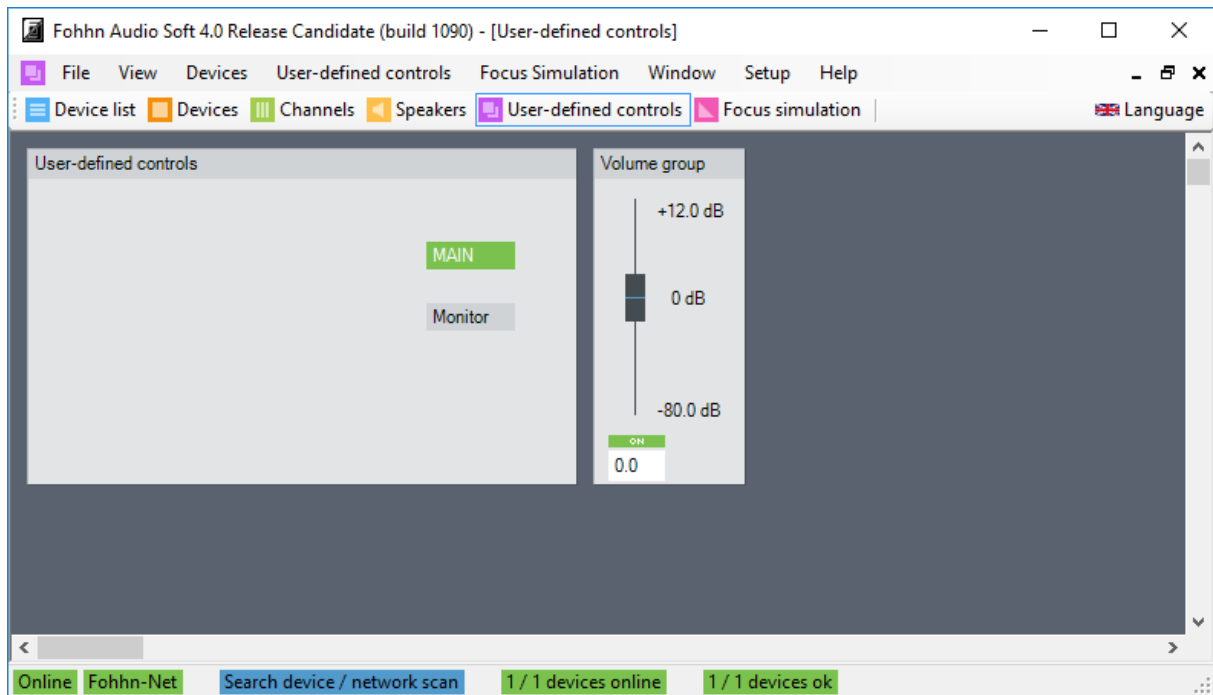
You can select and adjust several loudspeakers at once. Click in the *Speakers* view and drag the cursor (with the left mouse button held down) over the relevant speakers.



Please note that, with devices belonging to the **Xperience-Series**, passively connected subwoofers will not show up in the *Speakers* view – only the two output channels of the relevant device(s). In most cases it is probably easier to control these particular devices using the *Devices* view.

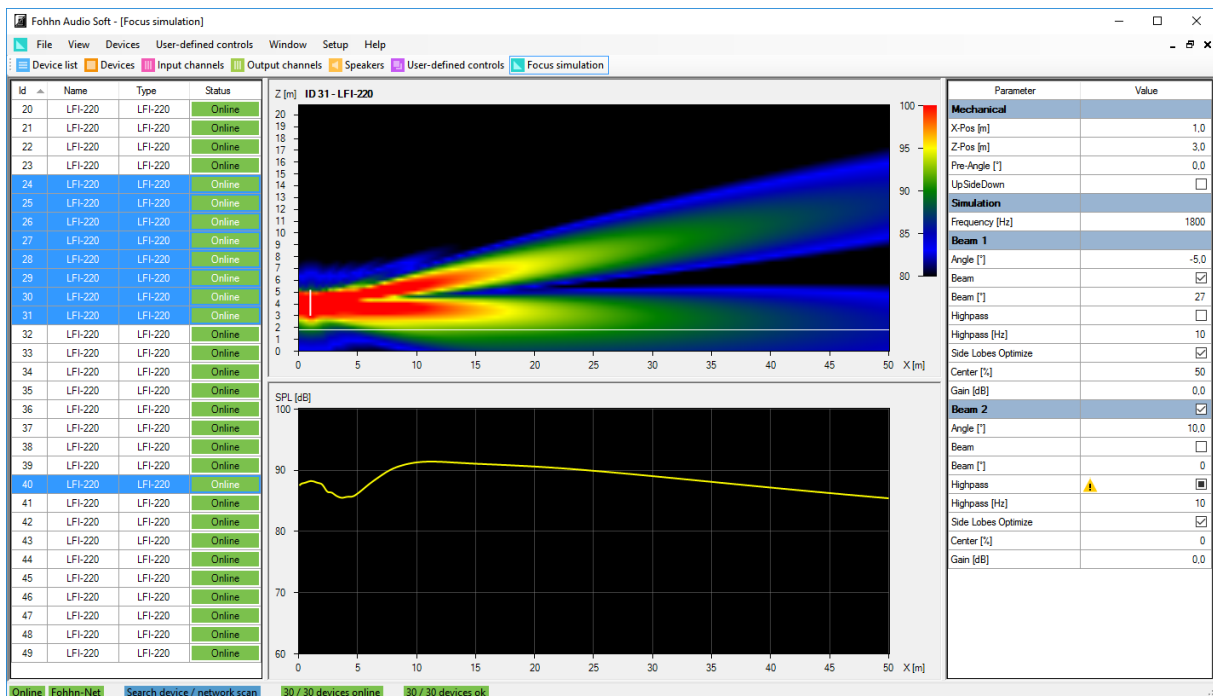
### 3.3.5 User-defined Controls

The *User-defined Controls* view lets you combine devices and/or channels into Groups. Here, you can construct Mute-, Preset- and Volume groups.



### 3.3.6 Beam Steering

This view can only be used with hardware that has Beam Steering capability. It then offers access to all the Beam Steering parameters on these loudspeakers. A more detailed description of the respective parameters and their operation can be found in the relevant product user manual.



#### Selecting a Beam Steering speaker

To adjust the dispersion characteristics of a Beam Steering loudspeaker (i.e. loudspeakers belonging to the **Linea Focus** und **Focus Modular** series) click in the device selection on the relevant loudspeaker. The selected speaker will then be highlighted in blue.

## 3.4 Context Menus

Many **Fohhn Audio Soft** functions are exclusively performed using context menus. We will now briefly introduce the context menus for each view and explain which functions are performed here.

### 3.4.1 Device List

The following commands/functions are available in this context menu:

- **Reassign Offline Devices**  
This command enables **Fohhn Audio Soft** to search for a device that, during the course of operation, you may have connected to another Node. The software reassigns the located device to the new Node. The command stays active in the background until the device is located. During the search, the *Node* column will show that the relevant device is functioning according to its last settings. After the device has been found however, the *Node* column will display the name of the new Node.
- **Reload Data From Devices**  
Here, **Fohhn Audio Soft** re-reads the current DSP parameters in the selected device and displays them in the *Devices*, *Input-/Output Channels* and *Speakers* views.
- **Load/Save Presets**  
This lets you load existing presets for the selected device from the **Fohhn** Pool, or save the current configuration as your own preset.
- **Window Positions**  
Using the command *Show in Devices View*, you can make all selected devices in the *Devices* view visible once again, if they have previously been hidden.  
When using the commands *Reset Window Position of Device* and *Reset Speaker Positions*, the software arranges device and loudspeaker symbols in the *Devices* and *Speaker* views, so that all devices and loudspeakers currently in use are visible.
- **Remove Selected Device**  
This removes the selected device from **Fohhn-Net** and thereby from the system. Please note that the device will be removed without requiring any further confirmation, so if removed by mistake, it will need to be newly registered.
- **Settings**  
This will open the *Settings* dialog, provided that additional configuration possibilities are available for the device.  
**Please note that this function is only available for certain devices. More details can be found in the user manual for the relevant device!**
- **Manage Speaker Presets**  
This opens the Speaker Database.
- **Change Fohhn-Net ID**  
This opens the dialog with the same name, in which you can allocate a new network ID to a device.
- **Rename Device**  
This opens the *Rename* dialog, in which you can assign a user-specific name to the device. The device will now appear in all the views with this name.

### 3.4.2 Devices

The following commands/functions are available in this context menu:

- **Copy**  
This lets you copy the value or function status of a desired DSP function (fader, controller or function button) to the cache memory.



- **Insert**  
This lets you transfer the copied and temporarily saved value / function status information to the same function on another channel.
- **Reset**  
This command returns all parameters on the selected device to their default settings.
- **Reset Window Positions**  
Using *Reset Window Positions*, the software arranges the device symbols so that the current device is visible.
- **Rename Channels**  
This opens the *Rename* dialog, in which you can allocate a user-specific name to the channels in a device. The channels will now appear in all the views with this name.
- **Rename Device**  
This opens the *Rename* dialog, in which you can allocate a user-specific name to the device. The device will now appear in all the views with this name.

### 3.4.3 Channels

The following commands/functions are available in the Status view on the left side of this context menu:

- **Identify**  
This makes the blue LED, or the display on the selected device flash so that it can be visually identified. This command can also be carried out using the hot key shortcut “S”.
- **Illumination**  
This lets you switch the blue **Fohhn** logo light on the front of the speaker ON or OFF. These commands can also be carried out using the hot key shortcuts “X” and “Y”.
- **Load/Save Preset**  
This lets you load presets for the selected device, or save the current configuration as your own preset.
- **Select Speaker Preset From List/Database**  
This lets you load a speaker preset for the selected channel: *Select from List* only refers to the speaker presets that are stored in the device, whereas *Select from Database* refers to all available speaker presets.
- **Rename**  
This opens the *Rename* dialog, in which you can allocate a user-specific name to a channel. The channel will now appear in all the views with this name. This function can also be carried out using the hot key shortcut “A”.
- **Set Gain (Absolute)**  
This opens the *Gain* dialog in which you can enter an absolute gain value for the channel (to one decimal place). You can also open this dialog using the hot key shortcut “T”. Entering a value of *0.0 dB* returns the channel to its default setting.
- **Set Mute**  
Using the commands in the relevant submenu, you can switch a channel on, off, or toggle between the two. These functions can also be carried out via the hot key shortcuts “Q”, “W” and “E”.
- **Polarity**  
Using the commands in the relevant submenu, you can switch the channel’s signal phase to normal, inverted, or toggle between the two.
- **Routing**  
This opens the *Routing* dialog. You can also open this dialog using the hot key shortcut “R”. **You can find more information on this in Chapter 5.2.**

- **Generator**  
This opens the *Generator* dialog, in which you can assign a channel for the output of a test signal (signal type, level and frequency are variable).
- **Standby**  
This opens the *Standby* dialog, in which you can switch the current device on or off. You can also carry out this function using the hot key shortcut "Z".
- **Add To Group**  
This lets you either create a new group (consisting of several channels), using the *New Group* dialog, or add the selected channel to an existing group. This latter function can be carried out using the hot key shortcut "C". Hot key shortcut "V" can be used to create a new group.
- **Remove From Group**  
This lets you remove the selected channel from the group to which it currently belongs.
- **Rename Group / Change Colour**  
This opens the *Rename Group / Change Colour* dialog, in which you can give the selected group a new name, or assign a new colour to it. You can also carry out this function using the hot key shortcut "B".
- **Activate Single/Group Select Mode**  
This lets you temporarily remove a channel from a group (*Single Select Mode*) or reinstate a channel back into a group (*Group Select Mode*). You can also carry out this function using the hot key shortcuts "F" and "G".
- **Manage Speaker Presets**  
This lets you load new speaker presets from the **Fohhn** Database into the device. This is relevant when a new speaker model becomes available.

#### 3.4.4 Speakers

The following commands/functions are available in this context menu:

- **Sign**  
This makes the blue LED, or the display on the selected device flash so that it can be visually identified.
- **Light ON/OFF**  
This lets you switch the blue **Fohhn** logo light on the front of the speaker *ON* or *OFF*.
- **Load/Save Preset**  
This lets you load existing presets for the selected device from the **Fohhn** Pool, or save the current configuration as your own preset.
- **Select Speaker Preset From List/Database**  
This lets you load a speaker preset for the selected channel: *Select from List* only refers to the speaker presets that are stored in the device, whereas *Select from Database* refers to all available speaker presets. This function will be relevant if you are using a passive **Fohhn** loudspeaker on the channel.
- **Rename Channel**  
This opens the *Rename* dialog, in which you can allocate a user-specific name to a channel. The channel will now appear in all the views with this name.
- **Combine Speaker Stack**  
If you have simultaneously selected several **Focus-Series** loudspeakers or subwoofers in the *Speakers* view, this will let you combine (i.e. stack) them into a single unit and subsequently handle those combined speakers as a single unit.
- **Release Speaker Stack**  
This lets you separate the loudspeakers that were previously stacked together. As a result, they can once again be individually set up and parameterized.

- **Create Group**  
If you have simultaneously selected several speakers in the view, this command will let you create a new group comprising these speakers. This will allow you to change parameters on all of them at the same time. When changing relative volume levels, the relevant faders will show up in blue.
- **Release Group**  
This lets you disband an existing group.
- **Manage Speaker Presets**  
This lets you load new speaker presets from the **Fohhn** Database into the device. This is relevant when a new speaker model becomes available.
- **Routing**  
This opens the *Routing* dialog. **You can find more information on this in Chapter 5.2 “Routing”.**

### 3.4.5 User-defined Controls

If you have created a volume group using the *User-defined Control* menu, the following commands/functions will be available via this context menu:

- **Delete Window**  
This command lets you delete the relevant volume group.
- **Configure**  
This command opens the *Configure Volume Group* dialog, in which you can add additional channels or remove existing ones from the relevant volume group configuration.

If you have added a window for your own controls, via the *User-defined Controls* menu, the following commands/functions will be available via the context menu:

- **Add Mute**  
This lets you create a Mute button with which you can mute or activate selected system inputs and outputs by clicking on the button.
- **Add Preset**  
This lets you create a button with which you can load presets by clicking on the button.
- **Configure**  
This opens the *Rename* dialog, in which you can rename an added control element.
- **Delete Window**  
This lets you delete the relevant control element from both the view and the system.

### 3.4.6 Beam Steering

The following commands/functions are available in the parameter field of this context menu:

- **Copy**  
This lets you copy the value or function status of a desired Beam Steering function to the cache memory.
- **Insert**  
This lets you transfer the copied and temporarily saved value / function status information to the same function on another channel.

## 4. Operation

This chapter covers the initial operation of your **Fohhn** system using **Fohhn Audio Soft**. The following instructions assume that your **Fohhn-Net** is fully connected: You will find information on connecting data- and audio cables in the documentation that was supplied with your **Fohhn** hardware product. Now start up **Fohhn Audio Soft**.

Please check the following carefully:

- Make sure that your computer is connected to one (or more) **Fohhn-Net Adapter(s)**, via either a USB- or Ethernet interface.
- Make sure that the **Fohhn-Net Adapter(s)** is/are connected to active **Fohhn** hardware.
- Make sure that the **Fohhn** hardware has the appropriate audio cabling.
- Make sure that the volume level of the audio source is turned down completely.
- Make sure that the **Fohhn** hardware is switched on.

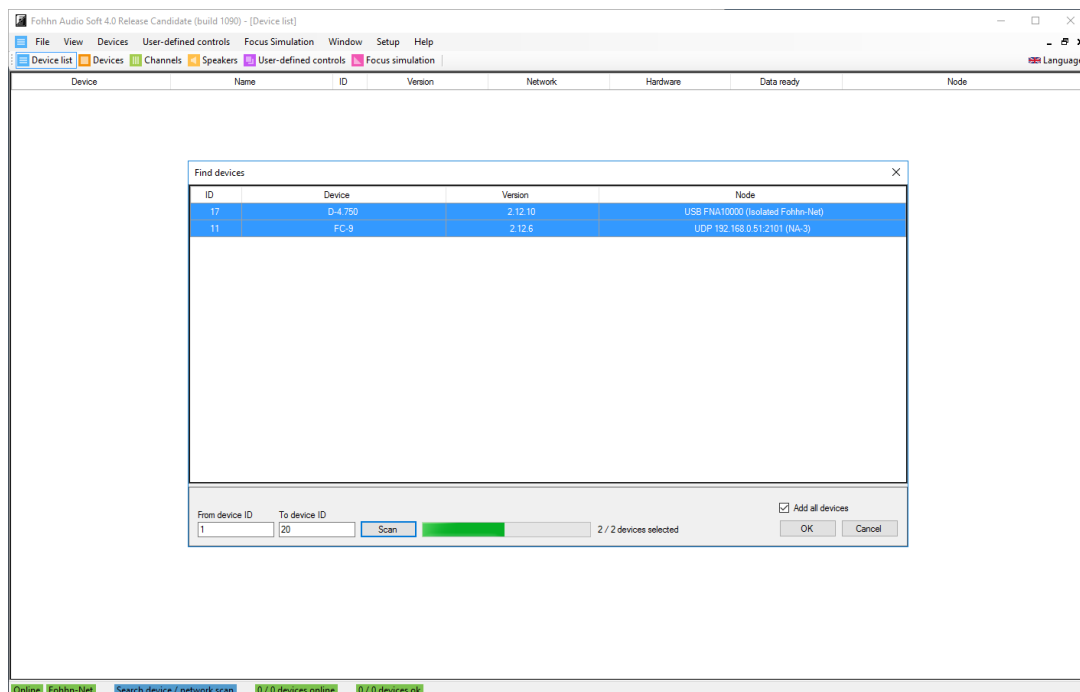
### 4.1 Fohhn-Net Setup

#### 4.1.1 Starting the Software

Find the link to **Fohhn Audio Soft** on your computer. You can start up the software in the following ways:

- Double-click on the *Fohhn Audio Soft* icon, which will have appeared on your computer's desktop following installation.
- Start the software via the path *Start > All Programs > Fohhn Audio AG > Fohhn Audio Soft*.

**Fohhn Audio Soft** will have now started: If one or more **Fohhn-Net Adapters** have been correctly connected in the system, the software will automatically recognise these and incorporate them into the workspace.



The software will then open the *Search Device / Network Scan* dialog and automatically search the **Fohhn-Net** setup for **Fohhn** hardware. All recognised devices will now show up in the dialog with the following information:

- **ID**  
This refers to the **Fohhn-Net** ID that the device has been allocated. You can change this ID as required.
- **Device**  
The name of the **Fohhn** product will appear here. This product name cannot be changed.
- **Version**  
This shows the Firmware version for each device.
- **Node**  
This shows the name of the **Fohhn-Net Adapter** to which the components are connected. Several **Fohhn-Net Adapters** can be simultaneously registered in the **Fohhn-Net** setup.

As a default, **Fohhn Audio Soft** searches for devices with ID numbers 1-32. Using the dialog fields *From Fohhn-Net ID* and *To Fohhn-Net ID*, deviant values of between 1 and 254 can be entered, provided you already know that the **Fohhn** devices in question are set to these numbers by default. Provided that you enter these deviant numbers, **Fohhn Audio Soft** will save them for future registrations. Click on *Search* to perform a new network scan.

At the end of the search, all recognised **Fohhn** components will appear in the *Find devices* dialog, but will not have automatically been loaded into the software workspace. This is done as follows:

- To register all recognised devices, select them in the *Add All Devices* dialog field, then confirm by clicking *OK*.
- If you only want to include selected components, click on these in the list while holding down the SHIFT key (for successive selections) or the CTRL key (for multiple selections), then click on *OK*.
- To include a single component, click on it using the right mouse button and in the context menu choose *Add Selected Device To Workspace*.
- Alternatively, you can add devices individually to the workspace by simply double-clicking on them.

**Fohhn Audio Soft** searches for **Fohhn** hardware in all active **Fohhn-Net** Nodes simultaneously. **Fohhn-Net** can handle a total of 254 IDs altogether: These IDs are allocated globally for the entire **Fohhn-Net** network. Duplicate IDs are not permitted!

#### 4.1.2 Configuration Using Multiple Nodes

With more complex system setups, more Nodes may be needed. In such cases it might be necessary, under some circumstances, to configure the individual Nodes separately within the system. From the Menu Bar select *Setup > Fohhn-Net Adapter*. This will open the *Fohhn-Net Configuration* dialog, in which all the recognised Nodes in the system are listed. The following information will be displayed:

- **Enabled**  
If this checkbox is active, the Node is active. Otherwise the Node will not be addressed, i.e. scanned in the system, and the connected components will not be found in the network.  
If the *Discovering Enabled* field is activated, then all Nodes in the system will be automatically searched for.
- **Type**  
This notes which Node type is connected and how it communicates with the computer.  
**Node**  
Further information on Nodes, e.g. their IP addresses, or the identification of the USB **Fohhn-Net Adapter** is displayed here.

- **Description**

This is where the current name of the Node is entered. You can change this as required.

Please note that this description is not saved in the Node itself, but only in the **Fohhn-Net** configuration.

- **Timeout**

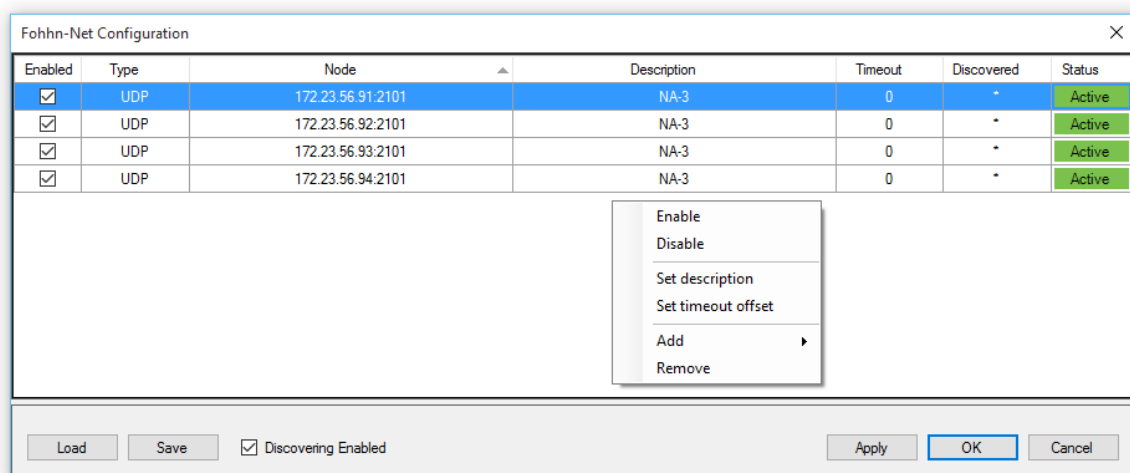
The current **Fohhn-Net** timeout / offset is displayed here.

- **Discovered**

The configuration status of the Node is displayed here: An asterisk shows that the Node is automatically configured.

- **Status**

This shows the status of the Node in the network: If the Node is active (*Enabled*) and recognised in **Fohhn-Net**, its listing will be highlighted in green. If the Node has been deactivated (no check under *Enabled*), the orange-highlighted *Disabled* entry will show up and the Node cannot be searched for in the **Fohhn-Net** network.



To configure a Node, click in the dialog window using the right mouse button. Using the context menu you can now make the following settings:

- **Enable/Disable**

This lets you activate or deactivate one or more Nodes (making a multiple selection by using the Shift/CTRL key).

- **Set description**

In this dialog you can enter your own description for the Node.

- **Set timeout offset**

Here you can make an adjustment so that **Fohhn Audio Soft** waits longer for the response from a device. This can remedy problems relating to a poor WLAN connection for example. Normally it is best not to change the default value (0 ms). Otherwise the system may take longer to respond as a result.

- **Add**

Here you can add further Nodes to the **Fohhn-Net**.

- **Remove**

This lets you remove a selected Node from the **Fohhn-Net**.

If you make modifications to the settings, you can apply these by clicking on the *Apply* button, without having to close the dialog. These settings will then be active.

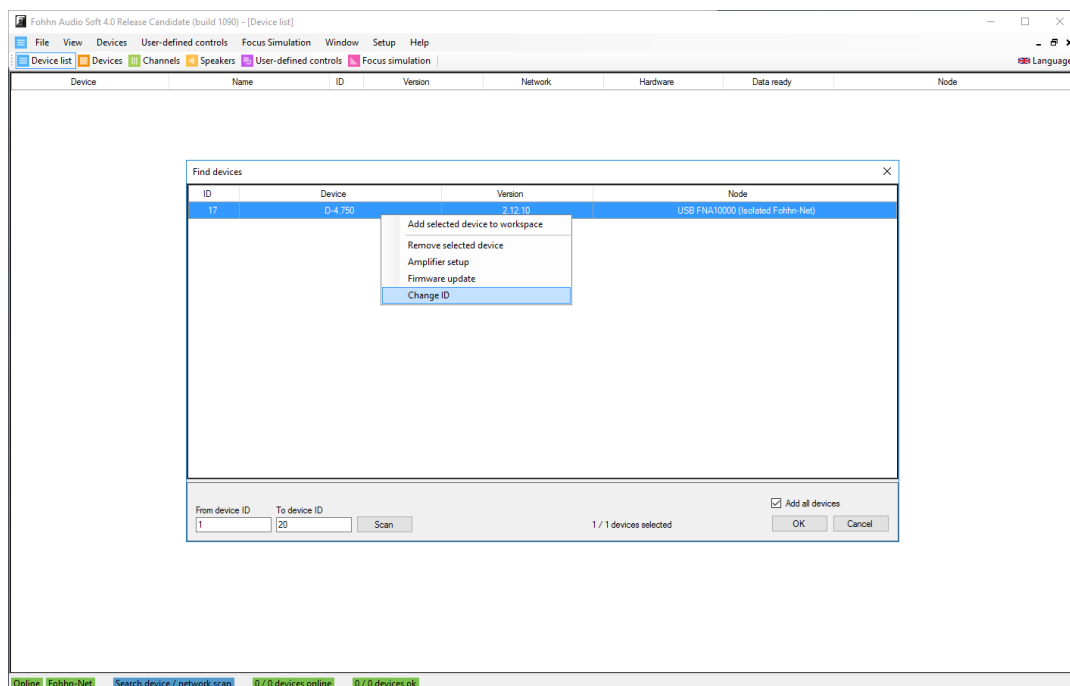
Using the *Save* button, you can save the current configuration as a file on your computer. This will function as a backup of the setup.

Using *Load* you can load stored configurations, having saved your entire **Fohhn-Net** configuration as a file that can then be loaded.

Clicking *OK* accepts all the changes and closes the dialog. Clicking on *Cancel* discontinues the configuration.

#### 4.1.3 ID Allocation

In order for **Fohhn Audio Soft** to communicate the **Fohhn** Hardware, each **Fohhn-Net** component must have its own individual ID, via which it can be clearly identified and communicated with. Each **Fohhn** component is allocated a specific default ID. However, you may need to change this default setting in order to avoid conflict with other existing components.



To change the ID directly in the *Find devices* dialog, proceed as follows:

1. Using the right mouse button, click on a component in the dialog's list view.
2. In the context menu select *Change Fohhn-Net ID*.
3. In the dialog with the same name, enter a new ID for the component. Make sure that this ID is not already in use.
4. Confirm this entry by clicking *OK*: The component will now have a newly assigned ID.

You can also change a component ID while it is in use. The device must already be registered. To do this, proceed as follows:

1. Open the *Device List* view, either via the *View* menu, or via the similarly named button on the Toolbar.
2. Using the right mouse button, click on a component in the *Device List* display.
3. In the context menu select *Change Fohhn-Net ID*.
4. Using the same dialog, give the component a new ID number, making sure that this ID is not already in use.
5. Confirm this entry by clicking *OK*: The component will now have a newly assigned ID.

## 4.2 Presets

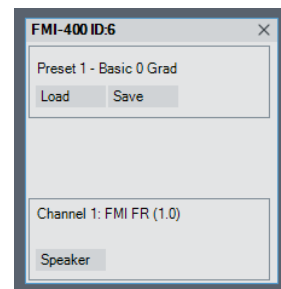
Clicking on the *Presets* button in the *Devices* view opens a control panel in which you can load and save up to 100 presets. At the top of the Preset window it shows which preset is currently loaded. The first ten presets are factory presets that cannot be overwritten. To restore your device to its default setting, simply load the first preset.

- **Load**

To load a preset, just click on the *Load* button. This opens the preset list. Select one of the presets, then click *OK*.

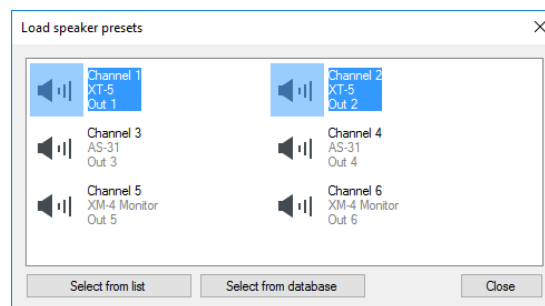
- **Save**

To save a preset, click on *Save*. This opens the preset list. Select a preset number, enter a name in the text field then click *OK*. All settings will be permanently saved in the device and will remain even when the device is switched off.



- **Speaker**

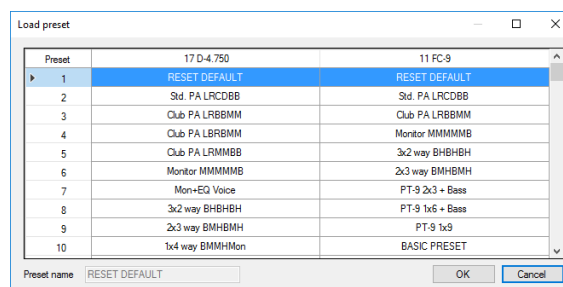
Clicking on the *Speaker* button opens a further window from which you can load speaker presets. Right clicking on one of the loudspeaker symbols opens the list of speaker presets. You can also open the speaker presets by clicking on either the *Select From List* or *Select From Database* buttons. *Select From List* only accesses the speaker presets that are saved to the device, whereas *Select From Database* accesses all available speaker presets.



In the *Input-/Output Channels* and *Speakers* views, presets can be simultaneously loaded and saved to multiple devices using the context menus.

1. **Load Preset**

This button opens the preset list. Select the desired preset from the list and confirm by clicking *OK*.





## 2. Save Preset

This button opens the preset database. Using a mouse click, select the preferred location in which to save your preset. Under *Preset Name*, enter the desired name for your preset and confirm this by clicking *OK*.

## 4.3 System Setup

Once communication has been established between **Fohhn Audio Soft** and the various hardware components, you can begin configuring your system.

Before starting to operate your **Fohhn** loudspeakers, you will need to load the correct speaker presets. With some devices, such as controllers, amplifier presets need to be loaded. If you plan to start with a completely new configuration, it is best to first load a factory preset (e.g. Preset 1), from which you can then create one of your own user presets.

Having loaded the preset, you can then adjust the settings to suit the current sound situation. You also have the possibility to change DSP function parameters – *Equalizer, Compressor, Limiter, Noise-Gate, Delay* und *X-Over* – as required, and to save these in your own user preset.

## 4.4 Settings for Devices, Channels and Speakers

After the system has been basically configured, you can further specify the individual components. With larger systems in particular, it makes sense to specifically name the individual devices, loudspeakers and/or channels.

### 4.4.1 Renaming Devices

For easier identification within **Fohhn Audio Soft**, we recommend giving your devices individual names. To do this, proceed as follows:

1. Open the *Device List* or *Devices* view, either via the similarly-named entries in the *View* menu, or by using the buttons in the Toolbar.
2. Using the right mouse button, click on the desired device in the list (*Device List*) or workspace (*Devices*).
3. In the context menu choose *Rename Device*.
4. In the *Rename* dialog, enter a new name for the device and complete the entry by clicking *OK*.

This new name will now be adopted in the *Device List*, *Devices* and *Input-/Output Channels* views.

### 4.4.2 Rename Channels

With a controller or power amplifier, you have the possibility of separately naming individual channels. To do this, proceed as follows:

1. Open the *Devices*, *Input-/Output Channels* or *Speakers* view, either via the similarly named entries in the *View* menu, or by using the buttons in the Toolbar.
2. Using the right mouse button, click on the desired device or channel.
3. Select the appropriate entry in the context menu of the particular view.
  - *Devices: Rename Channel > Rename Channel X*
  - *Channels: Rename*

- *Speakers: Rename channel*
4. In the *Rename* dialog, enter a new name for the channel and complete the entry by clicking *OK*.

This new name will now be adopted in the *Devices*, *Input-/Output Channels* and *Speakers* views.

#### 4.4.3 Arranging the Loudspeakers and Devices

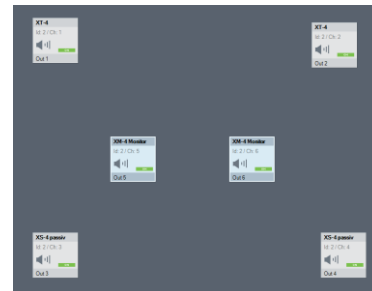
A further possibility, which makes the **Fohhn Audio Soft** display easier to handle, is the ability to graphically arrange the various loudspeakers and devices on the user interface. For complex applications and/or fixed installations in particular, we recommend that the loudspeakers and devices be arranged on the interface in exactly the same way that they are physically positioned in the room.

The name shown on the speaker symbol corresponds with that of the currently loaded speaker preset. If a question mark appears here, the loading process may not yet be completed so the speaker preset will not be active!



To arrange loudspeakers and devices, proceed as follows:

1. Open the *Devices* or *Speakers* views either via the similarly named entries in the *View* menu, or by using the buttons in the *Toolbar*.
2. Arrange the individual loudspeaker pictograms and/or devices according to the physical positions of the loudspeakers and devices in the room.

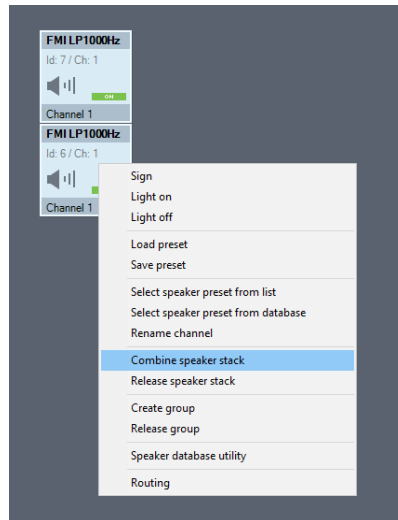


This arrangement of loudspeakers and devices will be saved in **Fohhn Audio Soft** and will remain until you change the configuration of the arrangement again.

#### 4.4.4 Combine Speakers (Focus Modular and Focus Venue only)

If you are working with **Focus Modular** or **Focus Venue** loudspeakers from the **Focus-Series** (e.g. **FM/I-400**), you can combine these modules into a single unit. To combine these loudspeakers, proceed as follows:

1. Open the *Speakers* view, either via the similarly named entry in the *View* menu, or by using the button in the *Toolbar*.
2. Arrange the unit pictograms one above the other, as with the physical units, so that they are touching one another on the screen.
3. Select all these loudspeaker pictograms with the mouse.
4. Using the right mouse button, click on one of the selected speakers to open the context menu.
5. Select *Combine Speaker Stack*.



In the loudspeaker pictograms, next to the ID, an C will appear: These means that the loudspeakers are now one “Combined Speaker”.

## 4.5 DSP Functions

**Fohhn Audio Soft** gives you direct access to all the parameters and functionality of the **Fohhn Audio DSP** (digital signal processor).

With the **Fohhn Audio DSP**, all signal processing functions are calculated in real time. Here you can access all the relevant audio parameters and shape the sound of your **Fohhn** loudspeaker systems according to your requirements and taste.

The following DSP functions are available in the *Devices*, *Input-/Output Channels* and *Speakers* views. In the *Input-/Output Channels* and *Speakers* views, you will find the controls on the right side of the window. In the *Devices* view, you can open the controls by clicking on the relevant buttons for the respective device.

### 4.5.1 Volume

Using the fader, the volume level of the relevant channel (-80 to +12 dB) can be controlled and displayed.

- **Fader/Text Field**  
Set the desired level either directly by using the fader, or via the corresponding text field.
- **On/Off**  
The *On/Off* button let you switch the relevant channel on or off.

### 4.5.2 Routing

Using the *Routing* button in the *Devices* view, you can display the channel routing for the relevant hardware and set the levels for each of the individual channels.

- **Fader/Text Field**  
Set the desired level either directly by using the fader, or via the corresponding text field.
- **On/Off**  
The *On/Off* button let you switch the relevant input signal on or off.

- **Inv**

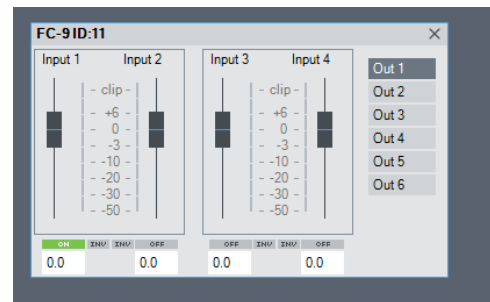
Using the *INV* button, the output signal phase position is inverted/rotated by 180° and its corresponding status displayed (red or grey).

- **Level indicators**

For correct level control, you have channel-related level indicators. Clipping is shown via a red CLIP indicator.

- **Context Menu**

Right clicking in the *Routing* window opens a context menu that allows you to rename the relevant device and its individual channels.



More information on Routing within the *Input-/Output Channels* and *Speakers* views can be found in Chapter 5.2 “Routing”.

#### 4.5.3 Delay

Here you can set the amount of Delay for each channel. You can also compare any possible delay differences between loudspeakers.

- **Delay**

Here you can set the amount of Delay – in either milliseconds or metres – using the rotary control, or the corresponding text field.

- **On/Off**

The *On/Off* button let you switch the Delay on or off.

#### 4.5.4 X-Over

Here you can set channel-related High- and Low Pass filters. Each channel has a high pass and a low pass filter available (Linkwitz-Riley-Characteristic with 24 dB slope).

- **High-pass**

Using either the rotary control or the corresponding text field, you can set the limit of the high pass filter (10 Hz to 20 kHz).

- **Low-pass**

Using either the rotary control or the corresponding text field, you can set the limit of the low pass filter (10 Hz to 20 kHz).

- **On/Off**

The *On/Off* button let you switch the high- and low pass filters on or off.

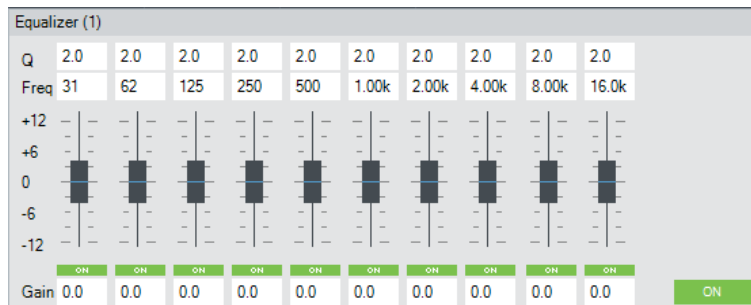
#### 4.5.5 Equalizer

Here you can set up a 10-band Equalizer for each channel/speaker, including the following parameters:

- **Q**

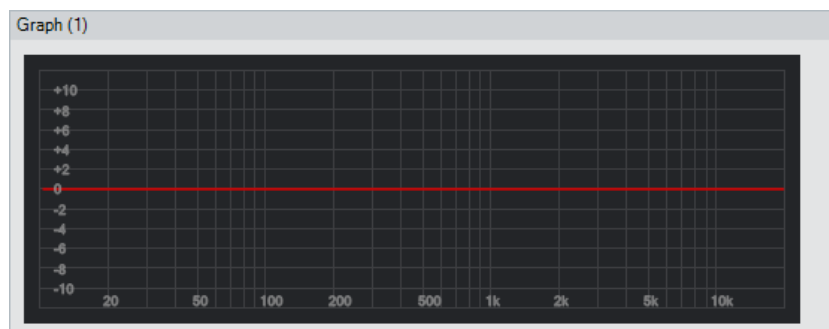
in this text field you can set the Q factor (e.g. range) of the relevant frequency bands between 0.1 (very wide) und 100 (very narrow).

- **Freq**  
In this text field you can set the exact frequency of the relevant frequency bands between 10 Hz and 20 kHz.
- **Fader**  
in this text field you can set how much you want to amplify or attenuate the relevant frequency band within a range of +/- 12 dB.
- **On/Off**  
Using the *On/Off* buttons, you can either switch each filter on or off separately, or switch the entire EQ on or off. This lets you easily check the influence of any EQ on the sound of your system as a whole.



#### 4.5.6 Graph

This displays the current channel-related EQ curves: Any changes made in the Equalizer are shown here.

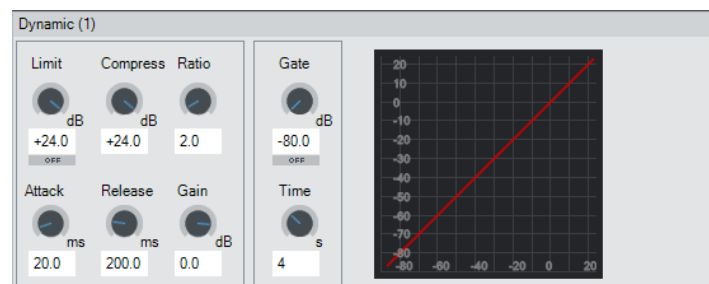


#### 4.5.7 Dynamics

Here you can set the following parameters for the dynamics processors (Limiter, Compressor and Noise Gate) that are available on each channel:

- **Limit**  
Here you can set the threshold, (-50 to +24 dB) at which the Limiter begins to respond, using either the rotary control or the corresponding text field.
- **Compress**  
Here you can set the threshold, (-50 to +24 dB) at which the Compressor begins to respond, using either the rotary control or the corresponding text field.
- **Ratio**  
Here you can set the compression ratio (1:1 to 1:20), using either the rotary control or the corresponding text field.

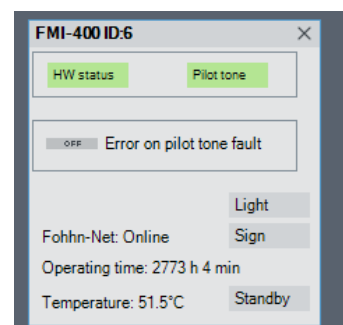
- **Attack**  
Here you can set the attack time of the Limiter/Compressor (0.1 to 200 ms), using either the rotary control or the corresponding text field.
- **Release**  
Here you can set the release time of the Limiter/Compressor (0.1 to 1000 ms), using either the rotary control or the corresponding text field.
- **Gain**  
Here you can set the subsequent Gain for the Limiter/Compressor (-80 to +12 dB), using either the rotary control or the corresponding text field.
- **Gate**  
Here you can set the threshold at which the Noise Gate activates (-80 to +12 dB), using either the rotary control or the corresponding text field.
- **Time**  
Here you can set the length of time for which the Noise Gate remains open (1 to 10 s), using either the rotary control or the corresponding text field.



## 4.6 Status

The *Status* button in the *Devices* view lets you overlay a window containing information on the **Fohhn-Net** status, the operating time and temperature of the connected devices.

- **Light**  
This button lets you switch the blue background lighting of the display, or rather the blue LED on the front of the corresponding device, on or off.
- **Sign**  
This button causes the display, or rather the blue LED on the corresponding device to start flashing.
- **Lock**  
This button lets you lock the display of the corresponding device so that changes can no longer be made on the device itself and can only be made via **Fohhn Audio Soft**. This *Lock* function can also only be removed from within **Fohhn Audio Soft**.
- **Standby**  
This button puts the corresponding device into Standby Mode.
- **Protect**  
This display lights up green when there are no problems with the corresponding channel. If the corresponding channel is found to be in Protect Mode, there is a problem in the hardware. (For example, if an overload or a short circuit is detected): In this case the display will light up red.



- **Fohhn-Net**  
Here you can see whether the corresponding device is offline or online.
- **Operating Time**  
Here you can see the total operating time of the corresponding device.
- **Temperature**  
Here you can see the current temperature of the corresponding device.

*HW status* (hardware status) and *Fohhn-Net* information is also displayed in the *Input-/Output Channels* and *Speakers* views.

The *Standby*, *Sign* and *Light* i.e. *Light on/Light off* functions can also be accessed in the *Input-/Output Channels* view using the context menu.

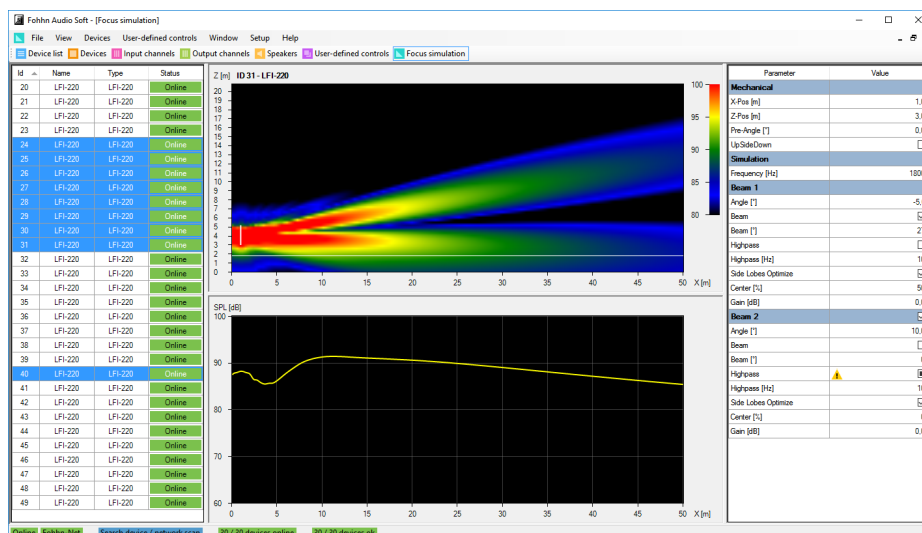
## 4.7 Beam Steering and Focus Simulation

### 4.7.1 Definition

In the audio processing world the term “Beam Steering” refers to the process of controlling the beam dispersion characteristics of loudspeaker systems using electronics and software. Through highly controlled overlapping of signal sources that are tightly positioned in close proximity to one another, it is possible to “bundle” sound over a wide frequency range and adjust the beam angle of the loudspeaker with unparalleled flexibility. In general: the longer the loudspeaker, the lower the frequencies that can be included in the “bundle”. Because each speaker driver can be individually controlled and adjusted, via use of a dedicated algorithm or DSP, this in turn influences the sound dispersion capability of the entire loudspeaker.

All **Fohhn Focus-Series** loudspeakers work with **Beam Steering Technology**, which facilitates this “acoustic bundling” and the subsequent control of beam dispersion characteristics. Combining the DSPs with **Fohhn Audio Soft** enables a loudspeaker system’s vertical inclination angle and vertical beam width to be electronically controlled – in real time!

A further advantage of this hardware/software combination is the ability to simulate the acoustic behaviour of sound in a room, without the need to have loudspeakers connected. **Fohhn Audio Soft** lets you configure the entire sound system in advance and visually set it up in the room space, even before the actual systems are in use at the venue. As required, you can also set up all the relevant acoustic parameters in advance on the screen, and then verify the settings in practice. Thanks to **Fohhn Audio Soft**, adjustments can be made in real time while the system is running, without jeopardizing the sound quality.



#### 4.7.2 Focus Simulation Parameters

Adjustable **Fohhn** loudspeaker parameters include the vertical beam width (in a range of 0 to 90°) and the vertical inclination angle (from -40 to +40°). Using **Fohhn Audio Soft**, these parameter adjustments can be made in real time, in highly precise 0.1° increments.

**Fohhn Audio Soft** also offers real-time access to other parameters: For example, the acoustic centre of a loudspeaker can be set practically anywhere over its entire length. **Fohhn**'s in-house developed **Side-Lobe-Free** and **Two Beam** technologies can also be activated using the relevant buttons.

It is additionally possible to select several **Focus-Series** devices at once. If these devices have different settings, this will be indicated in the parameter field by the use of a warning symbol. Editing a value with a warning symbol will result in the new value being adopted by all selected devices.

#### 4.7.3 System Setup (Focus-Series)

To adjust your system to meet venue requirements, open the *Beam Steering* view: This display lets you set all the parameters that are relevant to Beam Steering. You can either do this offline as a simulation, or online in real time.

The display and operation of the Focus Simulation is covered in the following sections:

##### **The Device Selection**

This shows all the **Focus-Series** devices that are in the system, along with their IDs, names, type/model classifications and current operating status.

Click on a device entry to select the required loudspeaker (or a "Combined Speaker") that you want to configure in the Parameter Field. The selected device is highlighted in blue.

Id	Name	Type	Status
0	Demo	Focus	virtual
7	LFI-220	LFI-220	online
6	FMI-400	FMI-400	online

##### **The Parameter Field**

This lets you configure the beam dispersion characteristics of the loudspeaker selected in the Device Selection, using the following parameters:

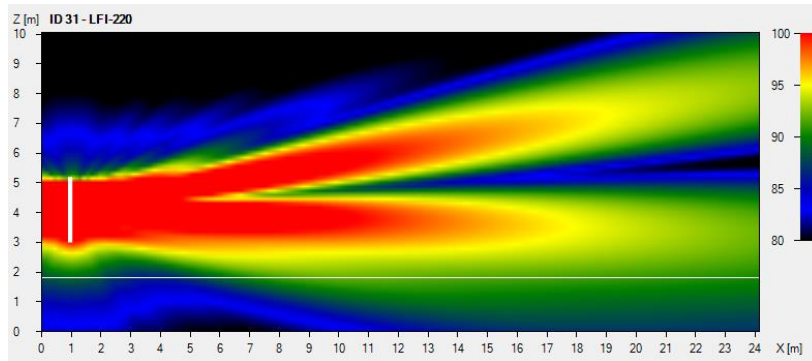
- **X-Pos (m)**  
This defines the distance of the selected speaker (in metres) in relation to the vertical back wall.
- **Z-Pos (m)**  
Defines the height of the selected speaker's lower edge (in metres) in relation to the floor.
- **Pre-Angle(°)**  
Here you can enter the mechanical inclination of the loudspeaker. This value only influences the display in the Focus Simulation.



- **Freq. (Hz)**  
Here you will input the reference frequency for calculation and display in the neighbouring Focus Simulation. The frequency you input here will have no effect whatsoever on the sound being reproduced by your loudspeaker.
- **Upside Down**  
Adding a check mark to this field means that the loudspeaker effectively turns upside down. This can be useful if you have to install your **Focus-Series** loudspeakers head first.
- **Beam 2 (Split)**  
Adding a check mark to this field creates a second beam for the loudspeaker in question. The following parameters can then be set for both beams, individually and independently from each other.
- **Angle (°)**  
Here you can enter the beam's vertical inclination angle – in 0.1° increments – within a range of +/- 40°.
- **Beam (°)**  
Adding a check mark to this field lets you set the vertical width of the beam – in 0.1° increments – within in a range of +/- 90°.
- **High-pass (Hz)**  
Adding a check mark to this field lets you enter the frequency threshold (10 Hz to 10 kHz): The fundamental tone below this frequency will be attenuated by 24 dB / Octave (fourth order). The high pass is recommended for effective masking of the fundamental tone.
- **Side Lobes > Optimize**  
When adding a check mark to this field, Side Lobes will be removed as far as is possible, by means of a dedicated Fohhn algorithm: Because this makes the room less “excited”, levels of speech intelligibility will be significantly improved. With the overall volume level of the system now somewhat lower as a result, you can use the volume control in **Fohhn Audio Soft** to compensate for this.
- **Center (%)**  
When *Optimize* is active, you can change the acoustic centre of the loudspeaker. 0 % means that the acoustic centre moves to what is virtually the bottom end of the speaker, whereas 100 % takes it to the top end. In its default setting of 50 % (or if *Optimize* is not active), the acoustic centre sits at what is basically the optical centre of the speaker.
- **Trim (dB)**  
Here you can attenuate the level of the selected beam over a range of 0 to -90 dB. If two beams are active, you can use these fields to set the relative levels of both in parallel.

### ***The Focus Simulation***

This window displays a graphic representation of your selected loudspeaker's beam dispersion characteristics, resulting from the settings entered in the Parameter Field.

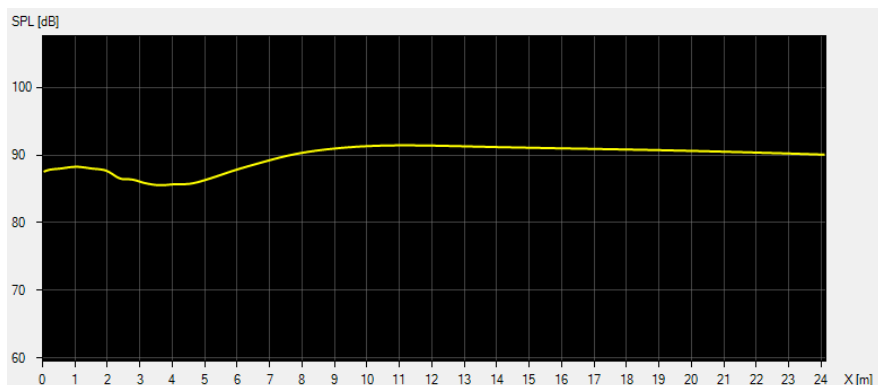


Focus Simulation with level legend (top right)

The Focus Simulation shows the position of the beam in the room: The Y-Axis represents the room's height, while the X-Axis represents its depth. You can adjust the sound pressure display by clicking on and moving the level range shown in the legend at the top right of the window.

The window below shows the sound pressure level for the selected frequency at a listening height of 1.70, or alternatively, the frequency response at a specific point.

If the mouse pointer is moving in the Focus Simulation window, you will see the frequency response at the position of the actual mouse pointer. If the mouse pointer is outside the Focus Simulation window, you will see the sound pressure level at the listening height.



Frequency Response Window

## 5. Advanced Operation

Once your system is set up and in operation, we'd like to introduce you to some more advanced operational features that are described this chapter. These will enable you to delve deeper into your system using **Fohhn Audio Soft**.

### 5.1 Creating Groups

In the *Input-/Output Channels* view, you can take selected channels across multiple devices and combine them to form a group. You can then name this group and highlight it with a colour. This subsequently allows you to simultaneously edit and control all the parameters of the channels belonging to the group. For large projects involving multiple devices, this is a very helpful tool.

To make your selection, click on the channel (holding down the Shift- or Ctrl key for multiple channels) in the *Input-/Output Channels* view. **Please note that a channel can only belong to one group at a time!**

To create a new Group, or edit an existing one, open the context menu by right clicking. The following command options will be available:

- **Add To Group** (Shortcut: C)  
This lets you add one or more selected channels to an existing group.
- **New Group** (Shortcut: V)  
This lets you combine several selected channels to form a new group. In the window that opens, you can also allocate a colour to this new group, with which it will be highlighted in the *Group* column. You can also name it.
- **Remove from Group**  
This function lets you permanently remove all selected channels from their groups.
- **Rename Group / Change Colour** (Shortcut: B)  
This lets you change the name and colour of an existing group. In the associated window/dialog, you can allocate a (new) colour to the group, with which it will be highlighted in the *Group* column. In the *Group Name* field, you can enter a specific name for the group.
- **Activate Single Select Mode** (Shortcut: F)  
This lets you temporarily disband a selected group: This function can be used with several groups at once. The channels belonging to the group will now show up in the *Group* column with a dotted underscore.
- **Activate Group Select Mode** (Shortcut: G)  
This lets you choose to re-activate a temporarily disbanded group. The function can be used with several temporarily disbanded groups at once.

## 5.2 Routing

The *Routing* function lets you establish which input signals will be replayed via which outputs. You can assign several input signals to one output channel.

We recommend that you open this function via the *Input-/Output Channels* view; although it is also available via the *Speakers* view. Right-click in here, or on the selected channels, and choose *Routing* in the context menu. Alternatively, you can open this window using the hot key shortcut R.

Routing

Input 1		Input 2		Input 3		Input 4		Channel name	Channel	ID
On +	0.0 dB	Off +	0.0 dB	Off +	0.0 dB	Off +	0.0 dB	Out 1	1	11
Off +	0.0 dB	On +	0.0 dB	Off +	0.0 dB	Off +	0.0 dB	Out 2	2	11
Off +	0.0 dB	Off +	0.0 dB	On +	0.0 dB	Off +	0.0 dB	Out 3	3	11
Off +	0.0 dB	Off +	0.0 dB	Off +	0.0 dB	On +	0.0 dB	Out 4	4	11
On +	0.0 dB	On +	0.0 dB	On +	0.0 dB	On +	0.0 dB	Out 5	5	11
On +	0.0 dB	On +	0.0 dB	On +	0.0 dB	On +	0.0 dB	Out 6	6	11
On +	0.0 dB	Off +	0.0 dB	Off +	0.0 dB	Off +	0.0 dB	Amp 1	1	17
Off +	0.0 dB	On +	0.0 dB	Off +	0.0 dB	Off +	0.0 dB	Amp 2	2	17
Off +	0.0 dB	Off +	0.0 dB	On +	0.0 dB	Off +	0.0 dB	Amp 3	3	17
Off +	0.0 dB	Off +	0.0 dB	Off +	0.0 dB	On +	0.0 dB	Amp 4	4	17
On +	0.0 dB	On +	0.0 dB	On +	0.0 dB	On +	0.0 dB	Out 5	5	17
On +	0.0 dB	On +	0.0 dB	On +	0.0 dB	On +	0.0 dB	Out 6	6	17

On

Off

Close

Here you can select one or more channels by clicking. The selected channels will be highlighted in blue and can now be edited.

Using the *ON/Off* buttons in the lower left corner of the window, you can mute or unmute the selected channels.

Further functions can be accessed from the context menu by right clicking on one of the selected channels:

- **Route > On** (Shortcut: *Q*)  
This lets you remove the muting from a selected channel.
- **Route > Off** (Shortcut: *W*)  
This lets you mute the selected channel.
- **Route > Toggle** (Shortcut: *E*)  
This lets you toggle the status of the selected channel(s).
- **Set Gain (absolute) > Enter Value** (Shortcut: *T*)  
This opens a window in which, using your computer keyboard, you can enter the desired level value for the selected channel, or channels.
- **Adjust Gain (Relative)**  
In contrast with *Set Gain (absolute)*, here you will not enter absolute values. Instead, you will add/subtract the desired level to/from the current values shown in the selected channels.
- **Adjust Gain (Relative) > Enter Value**  
Here you can enter level values in dB, in order to raise or lower the level of all selected channels.
- **Polarity**  
*Normal*: This switches the phase position of the selected channel to neutral.  
*Invert*: This inverts the phase position of the selected channels by 180°.  
*Switch*: This rotates the phase position of the selected channels by 180° at a time: Non-inverted channels will now be inverted, while inverted channels will revert to neutral.

## 5.3 User-defined Controls

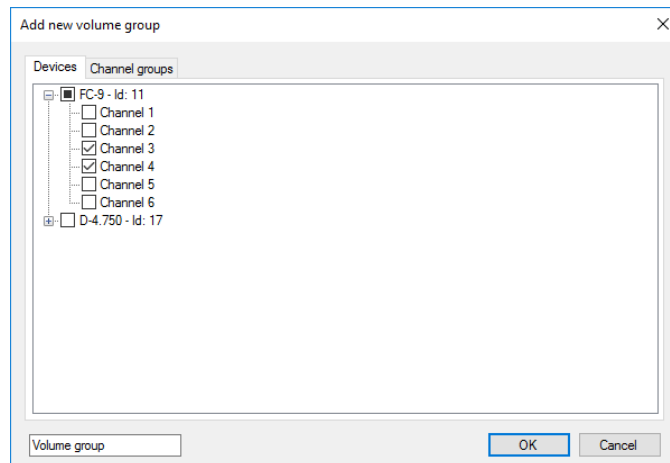
There are numerous applications for which **Fohhn Audio Soft**'s grouping functions can prove very useful:

For example, using a *Volume Group* lets you simultaneously control the volume levels on several loudspeakers. Creating a *Mute Group Button* will let you mute several loudspeakers at once. A *Preset Group Button* will let you call up various presets at the touch of a button.

### **Volume Groups**

To create a Volume Group, proceed as follows:

1. Click on the *User-defined Controls* menu.
2. Select *Add New Volume Group*.
3. Under *Devices* in the *Add New Volume Group* window, select the desired devices and/or channels by clicking on the corresponding checkboxes. Alternatively, under *Channel Groups*, you can select a group that you have previously created (**See Section 5.1 "Creating Groups"**).
4. In the text field at the bottom left of the window, enter a name for your group.



5. Confirm your choices and name by clicking *OK*.
6. The Volume Group will now be graphically displayed as a new control in the workspace.

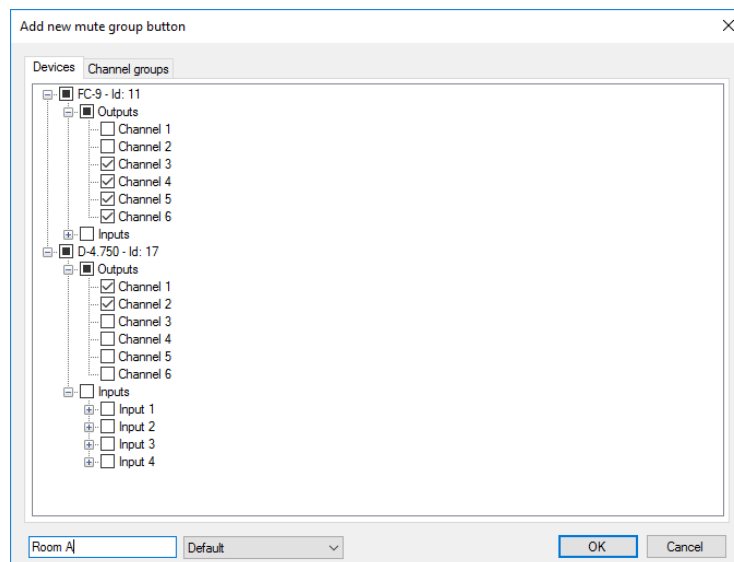
### **Mute Groups**

To create a Mute Group, proceed as follows:

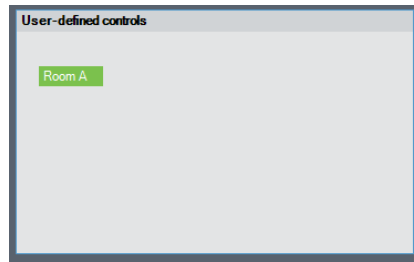
1. Click on the *User-defined Controls* menu.
2. Select *Add User-defined Controls Window*: A new window will appear in the workspace.
3. Right click in the newly opened *User-defined Controls* window to open the context menu.
4. Now click on *Add New Mute Group Button*.

Under *Devices* in the *Add New Mute Button Group* window, select the desired devices and/or channels by clicking on the corresponding checkboxes. Here, under *Channel Groups*, you can also select a group that you have previously created (**See Section 5.1 “Creating Groups”**).

5. In the text field at the bottom left of the window, enter a name for your Mute Group.
6. Confirm your choices and name by clicking *OK*.



7. The Mute Group button will now be graphically displayed as a new control.

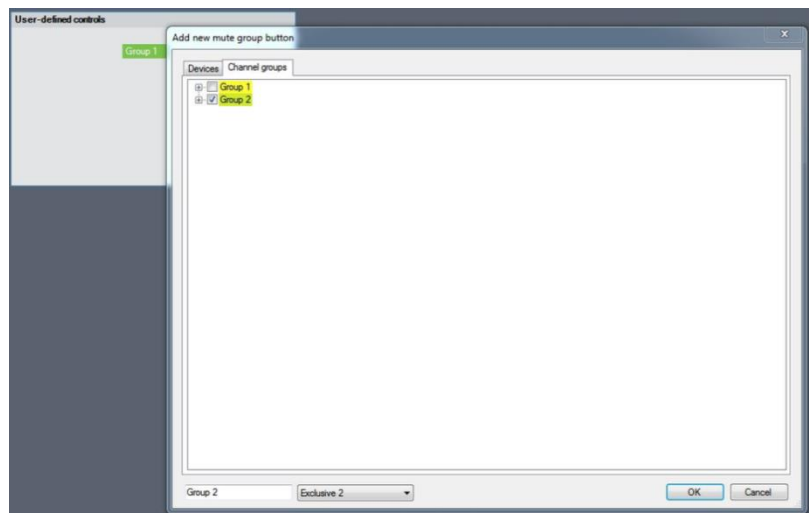


8. If the control icon is green, the related group is active. If it is grey, the group is muted.

You can add a new Mute Group Button into the same *User-defined Controls* window each time. Right click in the relevant window and select *Add New Mute Group Button*.

If you have created several mute groups, you can also create some *Exclusive Options*. This means for example, that with a single click you can activate one group, while at the same time muting another. To do this, proceed as follows:

1. Right click on the relevant Mute Group icon in the *User-defined Controls* window to open the context menu.
2. Click on *Edit*.
3. In the newly opened *Add New Mute Group Button* window, select *Devices* and click on the dropdown menu at the bottom of the window.
4. Choose an Exclusive Option for your Mute Groups e.g. *Exclusive 1*.
5. Confirm by clicking *OK*.
6. Repeat the process. You can for example choose the same Exclusive Options for several Mute Groups.

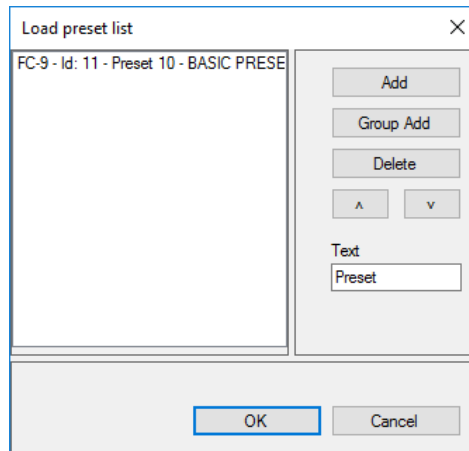


### **Preset Groups**

To create a Preset Group, proceed as follows:

1. Click on the *User-defined Controls* menu.
2. Select *Add User-defined Controls Window*.
3. Right click in the newly opened *User-defined Control* window to open the context menu.
4. Click on *Add Preset Group Button*

5. In the *Preset List*, select the desired devices and/or channels. Either click on *Add* to add the selected devices to the group, or click on *Group Add*, to add an existing Volume Group to the Preset Group. In the *Text* field you can enter a name for the Preset Group



6. The Preset Group will now be graphically displayed as a new control.
7. If the group icon is highlighted in blue, the corresponding group is active. If it is grey, another group is active.

You can add a new Preset Group into the same *User-defined Controls* window each time. Right click in the relevant window and select *Add New Preset Group Button*

### **Selecting Function Groups / Controls**

To work with a group, simply click in the corresponding window. With Volume Groups you can adjust levels, or, using the *On/Off* button, switch the group on or off.

With Mute Groups, clicking on the relevant button will mute/unmute the group in question.

With Preset Groups, clicking on the relevant button will call up the corresponding preset.

### **Context Menus for User-defined Controls**

Every *Volume Group* and *User-defined Controls* window has its own dedicated context menu. This is opened with a right mouse click. Within a *User-defined Controls* window, each control is also accessed via a further context menu.

*Volume Group* context menu:

- **Delete window**  
Click on this command to delete the entire Volume Group
- **Edit**  
Clicking on this command opens the *Edit Volume Group* window.

*User-defined Controls* context menu:

- **Add Mute Group**  
Click on this command to add a new Mute Group. In the associated *Add New Mute Group Button* window, you can then select the desired devices and/or channels. This process has already been described above.

- **Add Preset Group**  
Click on this command to add a new Preset Group. In the associated *Preset* window you can then select the desired presets. This process has already been described above.
- **Edit**  
Click on this command in order to assign a new name to this *User-defined Controls* window. Enter a new name in the *Rename* window's text field and confirm by clicking *OK*.
- **Delete window**  
Click on this command to delete the relevant *User-defined Controls* window and its associated groups.

Context menu *Buttons*:

- **Move**  
Clicking on this command puts a blue frame around the relevant group. You can then grab this using the mouse and move it as required within the *User-defined Controls* window.
- **Delete button**  
Click on this command to delete the relevant Mute- or Preset Group Button.
- **Edit**  
Click on this command to edit the groups. In the case of Mute Groups, open the *Edit Mute Group (Button)* window. Proceed as described above in order to make the required edits to your Mute Group.  
For Preset Groups, open the *Preset List* window. Proceed as described above in order to make the required edits to your Preset Group. -
- **Delete window**  
Click on this command to delete the relevant *User-defined Controls* window and its corresponding groups.

## 5.4 Sub Arrays

**Fohhn Audio Soft** makes it simple for you to combine **Fohhn** subwoofers into arrays. This means that their dispersion characteristics can also be controlled in real time using the *Beam Steering* view.

### 5.4.1 Guidelines

Please note that you can only combine the same type of **Fohhn** subwoofers in a Sub Array! In the case of active subs, you can however add passive subwoofers as slaves: So for example, it is possible to use an active **XS-10** together with a passive **XSP-10**.

However, any amplifiers used with the passive subwoofers must also be structurally identical. It is not possible to use different models at the same time.

If you are using a **Fohhn** Controller, make sure you are also only using identical amplifiers.

All subwoofers must be placed an equal distance from one another! It doesn't matter whether the subwoofers are arranged vertically or horizontally.

### 5.4.2 Subwoofers as a Combined Speaker

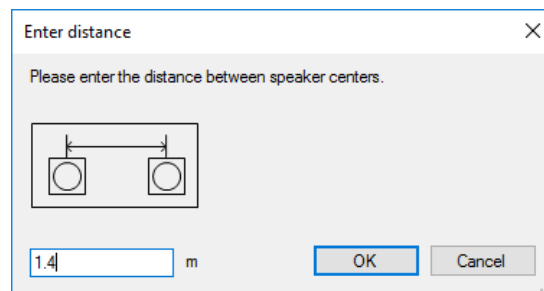
The following steps describe how to set up your Bass Array:



1. Open the *Speakers* view.
2. Arrange the subwoofer symbols in the same order that you have arranged the actual subs. The speaker symbols must be touching each other.



3. Select the desired subwoofers.
4. Right click on one of these subwoofers to open the context menu. Choose the option *Combine Speaker Stack*.
5. In the dialog that opens, enter the distance between each subwoofer's centre and confirm by clicking *OK*.



6. Your subwoofers are now combined into a Sub Array. This will appear in the *Beam Steering* view from where it can also be controlled.

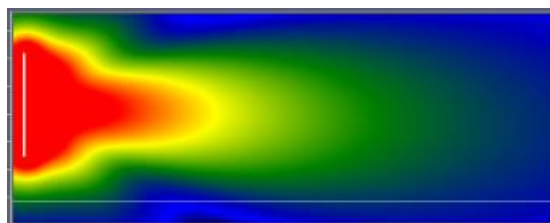
**Make sure that you always load the correct speaker presets from the database if you want to configure a Sub Array offline (i.e. without physically connected subwoofers)!**

### **Controlling a Sub Array**

1. Open the *Beam Steering* view.
2. Your new Sub Array is now shown in the device selection with the name Bass. Under Type it will show *Bass Stack*.

The Sub Array's ID is shown as a combined ID in the *Beam Steering* view(2XXX – whereby X stands for the lowest ID of the subwoofers involved).

3. In the Focus Simulation, the Sub Array is displayed as lines. In a horizontal subwoofer arrangement (i.e. next to each other), the Sub Array's dispersion characteristics are shown as an outline, whereas in a vertical arrangement (on top of each other), they are shown as a longitudinal section.



With regard to the parameter field, the beam characteristic configuration is the same as for other Focus-Series loudspeakers (see sections 4.7.2 and 4.7.3).

## 5.5 Preset Management

**Fohhn Audio Soft** has three different types of presets that are totally independent of one another:

1. Speaker Presets
2. Amplifier Presets
3. User Presets

As a user, you can only edit the user presets (denoted as *Preset* for short in the **Fohhn Audio Soft** menus). As a starting point for your own user presets, there are numerous templates available, which you can load into the *Device List*, *Devices*, *Input-/Output Channels* and *Speakers* views.

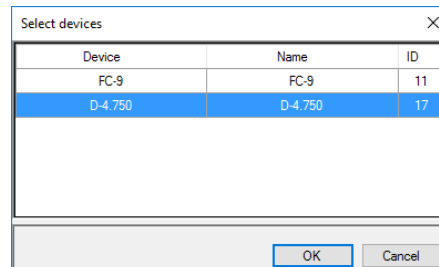
**Please note that you can only edit user presets and that these are totally independent from speaker and amplifier presets! Speaker and amplifier preset settings cannot be saved in user presets – this is in order to protect your loudspeakers.**

By default, user presets are saved in the relevant device and not on your computer. It is however advisable to also save these presets separately as external files. This means that you will need to export them.

### 5.5.1 Exporting Presets

To export a preset, proceed as follows:

1. Load the relevant preset.
2. Go to the File menu and choose *Export Preset to File*: The *Select Device* dialog will open.
3. Now select the device from which you want to export the preset, and then click *OK*.



4. Select a location in which to save the preset and give your user preset a name. Click on *Save* to confirm your choice.
5. Repeat steps 1 to 4 for all presets that you want to export from any device.

### 5.5.2 Import Presets

In order to use one of your own presets, stored on an external medium, in a **Fohhn** device, you will first need to import the preset into the device. Proceed as follows:

1. Go to the File menu and select *Import Preset from File*.
2. Locate the desired preset then click on *Open* to confirm your choice.
3. In the *Select Devices* window, choose the device into which you want to import the preset and confirm by clicking *OK*.
4. Finally, save the preset to your device. Repeat steps 1 to 4 for any presets that you want to import.

## 5.6 Projects

A project consists of all the configuration settings for all the devices in a system, including loudspeaker positions and Beam Steering settings, as well as all your configuration settings for a particular project. You can either load existing projects into **Fohhn Audio Soft**, or save projects that you have created or edited.

**Please note that using the command *Save Project As* will only save the presets that are loaded into individual devices at the time of saving and will not include any the other existing presets in the relevant device.**

### 5.6.1 Save Project as

This lets you save the currently loaded project, which you have either created or edited, to a preferred location. Saved projects can either be reloaded at a later date, or exchanged with other users.

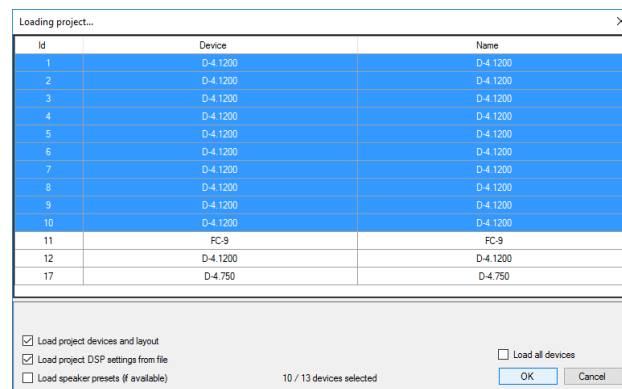
To save your configuration as a project, proceed as follows:

1. Go to the *File* menu and choose *Save Project As*.
2. Select the location in which you want to save your project. Click on *Open* to confirm your choice. The project is now saved.

### 5.6.2 Load Project

This lets you load an existing project on your computer. To load a project, proceed as follows:

1. Go to the *File* menu item and select *Load Project*.
2. Now select the desired project. Click on *Load* to confirm your choice.
3. In the *Load Project* dialog window, if the relevant box in the lower right corner is checked, all the existing devices belonging to a project will automatically be selected. This selection can be changed as required if you don't need all of the devices.



4. In the lower left corner of the dialog window you will find three further options:
  - **Load Devices and Configurations**  
When this option is active, all devices, along with their respective layout, will be loaded to the GUI in the way that they were saved.
  - **Load DSP Settings**  
When this option is active, saved DSP settings (EQ, Dynamic, Focus Simulation etc.) belonging to the project will be loaded and will overwrite the information saved in the devices.
  - **Load Speaker Presets (if available)**  
Choose this option if you want to load any saved speaker presets with this project.
5. Click on *OK* to confirm your choice. The project is now loaded.

## 5.7 Identifying a Fohhn-Net Device

1. Open the *Devices* view.
2. Click on *Status* in the graphic display relating to the device in question.
3. In the opened *Status* window, click on the *Sign* button. This button will now be highlighted in blue and on the physical device, the blue front LED will begin to flash. Deactivate the button once the device has been identified.

## 5.8 Signal Generator

Please ensure that the fader you are using to regulate the level of the test signal is pulled right down before you activate the test signal itself! In certain circumstances, a test signal could play back at excessive levels that might be potentially harmful to you and any other people who are in the same room as the speakers - as well as damaging the speakers themselves.

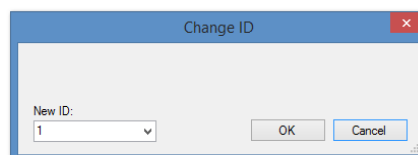
1. Open the *Devices* view.
2. Click on *Tools* in the graphic display relating to the relevant device.
3. In the Tools window, click on the *Sine* or *Noise* buttons: The relevant button will now be highlighted in green and either a Sinus tone or Pink Noise will be generated, depending on your choice.  
Using the fader you can set the level of the test signal and use the rotary control to set the frequency (if you selected *Sine*).  
For multi-channel devices, select a channel that will be used for playing back the test signal. By pressing the Ctrl key on your computer keyboard, you can simultaneously select several channels at once.

## 5.9 Changing a Fohhn-Net ID

In **Fohhn-Net**, each ID number must only be used once. Should an ID be used more than once, communication will no longer be possible with any devices that have this number. In this situation, all such devices must be physically separated from one other – either by switching them off, or by removing the network cable – so that no ID is duplicated.

A **Fohhn-Net** ID can either be changed using the *Search Device* or *Device List* view:

1. Select the device on which you want to change the ID. This will now be highlighted in blue.
2. Open the context menu (with a right click) and select *Change Fohhn-Net ID*.
3. Enter a new ID in the dialog window and confirm your choice by clicking *OK*.



4. Repeat the process with any other relevant devices.

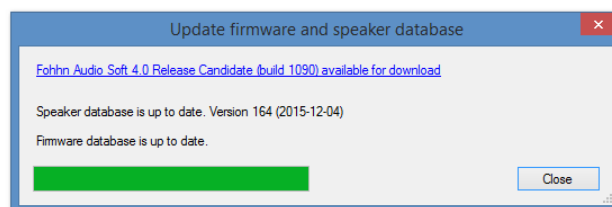
## 6. Appendix

### 6.1 Updating Your Firmware

The range of functions in your **Fohhn Audio Soft** depends not only on **Fohhn Audio Soft**, but also on the firmware in your devices and on the loudspeaker database. From time to time, updates are available for these sets of data, which can be downloaded into **Fohhn Audio Soft** (internet connection required!). An update is performed as follows:

1. Start **Fohhn Audio Soft** by double-clicking on the desktop icon, or using the path *Start > All Programs > Fohhn Audio AG > Fohhn Audio Soft*.
2. After the program has started up, click on the *Help* menu in the **Fohhn Audio Soft** Menu Bar and choose *Update Firmware and Speaker Database* (internet connection required!).

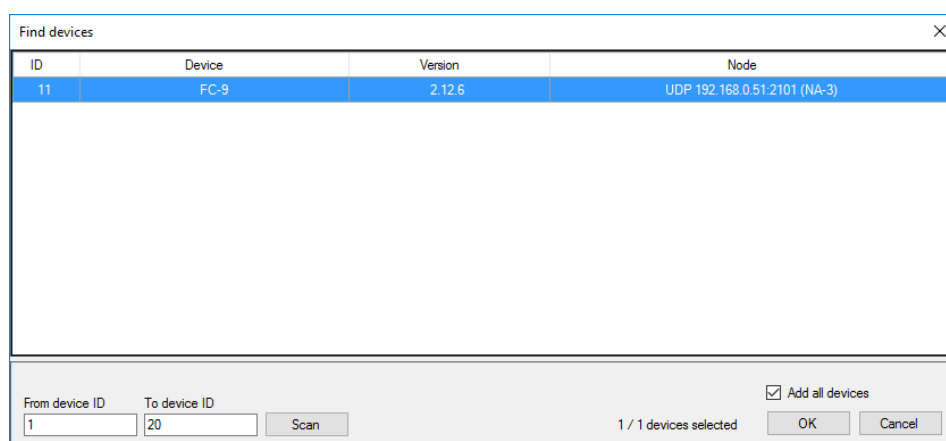
**Fohhn Audio Soft** compares your installed version with the one that is currently available on the server and either notifies you that your files are up to date, or offers you a download link for updating.



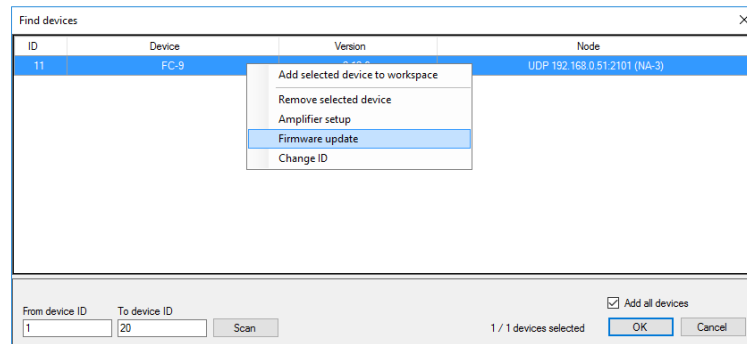
**The above-mentioned process loads the latest Firmware files onto your PC. They will not yet be active on your Fohhn devices!**

Proceed as follows to check, or rather update the Firmware on your devices. (This process does not require an internet connection since – as described above - the necessary Firmware files are now already loaded onto your PC):

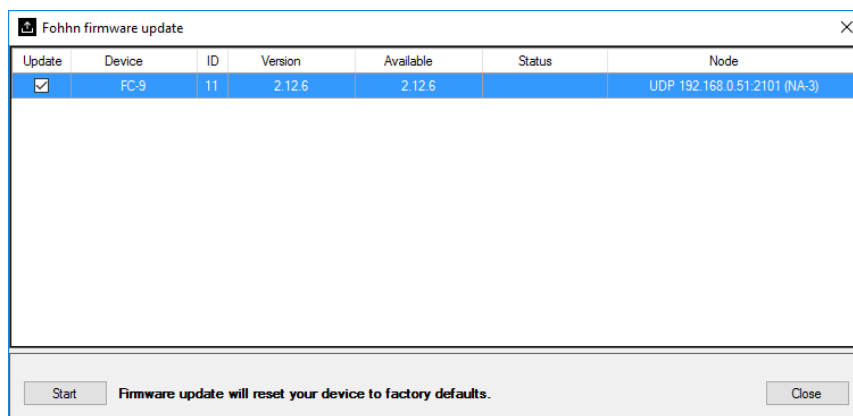
1. From the *Devices* menu, select *Find Devices in Network*. The following dialog will open:



2. Select the device (via mouse click) whose Firmware you want to update and open the following context menu by right clicking:



3. Now click on *Firmware update*. The following dialog will open:



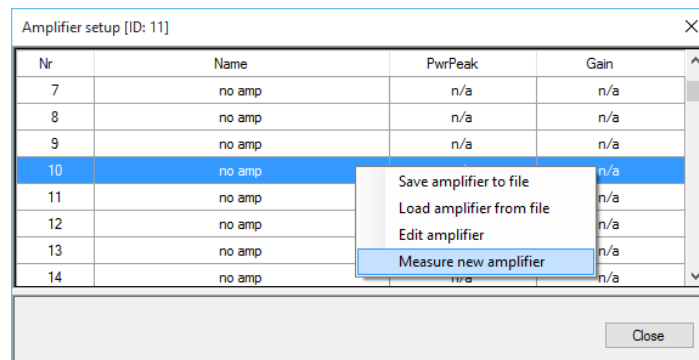
4. In the *Update* column, check the box next to the relevant **Fohhn** device. If a newer Firmware update is available for the device, **Fohhn Audio Soft** will automatically add an update check.
5. After you have selected all the relevant **Fohhn** devices, click on *Start*.
6. The latest Firmware will now be installed on the selected **Fohhn** devices. This process can take several minutes. The *Status* column lets you monitor the progress of this process. Once the Firmware is fully installed, it will say *ready* in this column.
7. Click on *Close* to complete the process.

**A Firmware update will restore the respective device to its factory/default settings. This means that any saved presets will be lost and cannot be recovered. If you still need any of the presets that have been saved on your device, you must first save these with *Fohhn Audio Soft*, in order to restore them to your device later on.**

## 6.2 Amplifier Setup

Using *Fohhn Amplifier Setups*, you can install your own amplifier presets on certain **Fohhn** devices. You can find further information on this in the user manual belonging to the relevant device.

1. Using the *Search Device / Network Scan* dialog, select a device then choose *Amplifier Setup* in the context menu.
2. All amplifier presets that currently exist on the device will be detected and listed in the *Fohhn Amplifier Setup dialog*.



Using this list display in the dialog, you can carry out the following functions:

- **Save amplifier to file**  
This command lets you save an amplifier preset from a device as a separate file.
- **Load amplifier from file**  
This command lets you load an amplifier preset that has been saved as a file.
- **Edit amplifier**  
This command opens the *Edit Amplifier* dialog, which offers you the following options:
  - **Amplifier name**  
Here you can name the preset.
  - **Power Peak 4ohm [W]**  
Here you can enter the peak power in Watts at 4 Ohm.
  - **Gain [dB]**  
Here you can enter the Gain in dB.
- **Measure new amplifier (FC-9 only)**  
This command is used as a system for measuring your own presets, but it can only be used together with an **FC-9** DSP controller. The process of measuring and creating your own amplifier presets is described in the **FC-9** user manual.

**Even after the amplifier presets are found to be present in a device, you must still load them into the device itself using Fohhn Audio Soft.**

## 6.3 Shortcuts/Hot Keys

In **Fohhn Audio Soft**, certain functions can be carried out directly using the keys on your computer keyboard. In addition to the global views, which can be directly called up using these shortcuts, it's also possible to handle commands within the *Input-/Output Channels* view and *Routing* dialog context menus in this way.

### 6.3.1 General Shortcuts

Shortcut	Function
Ctrl + D	opens the <i>Device List</i> view
Ctrl + O	imports a preset from a file
Ctrl + S	exports a preset to a file
Ctrl + Shift + O	opens a project
Ctrl + Shift + S	saves a project
F2	adds a device
F3	search for a device in the network
F4	opens the <i>Devices</i> view

F5	opens the <i>Input Channels</i> view
F6	opens the <i>Output Channels</i> view
F7	opens the <i>Speakers</i> view
F8	opens the <i>User-defined Controls</i> view
F9	opens the <i>Beam Steering</i> view
F11	undocks the active window from the <b>Fohhn Audio Soft</b> user interface

### 6.3.2 Shortcuts for the *Input-/Output Channels* view context menu

To perform the following shortcuts, open the context menu in the *Input-/Output Channels* view.

Shortcut	Menu Command	Function
S	Sign	causes the blue LED, or the display on the selected device to flash so that it can be visually identified
Y	Illumination > Light On	switches on the blue <b>Fohhn</b> logo light on the front of the speaker
X	Illumination > Light Off	switches off the blue <b>Fohhn</b> logo light on the front of the speaker
A	Rename	opens the <i>Rename</i> dialog, in which you can give the channel a user-specific name
T	Set Gain (absolute) > Enter Value	opens the <i>Gain</i> dialog in which you can enter an absolute gain value for the channel (to one decimal place)
Q	Set Mute > Output On (Play)	switches the relevant channel on
W	Set Mute > Output Off (Mute)	switches the relevant channel off
E	Set Mute > Output On/Off Toggle	toggles the current status of the relevant channel
R	Routing	opens the <i>Routing</i> dialog
Z	Standby	opens the <i>Standby</i> dialog, in which you can switch the current device on or off
C	Add To Group	adds the selected channel to an existing Group
V	Add To Group > New Group	opens the <i>New Group</i> dialog, for creating a new Group
B	Rename Group / Change Colour	opens the <i>Rename Group / Change Colour</i> dialog, in which you can rename the selected Group, as well as changing its colour
F	Activate Single Select Mode	temporarily disbands channels forming a Group
G	Activate Group Select Mode	reinstates a temporarily disbanded Group

### 6.3.3 Shortcuts in the *Routing* dialog

To perform the following shortcuts, open the *Routing* dialog via the *Input-/Output Channels* view context menu:

Shortcut	Menu Command	Function
T	Set Gain (absolute) > Enter Value	opens the <i>Gain</i> dialog in which you can enter an absolute gain value for the channel (to one decimal place)
Q	Route > On	switches the relevant channel on
W	Route > Off	switches the relevant channel off
E	Route > Toggle	toggles the current status of the relevant channel



## 6.4 Troubleshooting

If you encounter problems when using **Fohhn Audio Soft** together with hardware devices, please check out the following:

### **Fohhn Audio Soft will not start up.**

- Check whether the software has been correctly installed. De-install **Fohhn Audio Soft** and perform a new installation. On the **Fohhn** website, check whether there is new version of **Fohhn Audio Soft** available for download.
- Make sure that the operating system currently installed on your computer is compatible with **Fohhn Audio Soft**.

### **Fohhn Audio Soft does not recognise any devices when searching for them.**

- Make sure that the computer is correctly connected to the **Fohhn-Net Adapter**.
- Make sure that the Fohhn device is connected to the **Fohhn-Net Adapter**.
- In the ID area of the *Search Device / Network Scan* dialog, change the value range from 1 to 254, in order to find all devices.

### **There is no sound from the Fohhn system.**

- Check the status of the hardware in the *Device List*, *Devices*, *Input-/Output Channels and Speakers* views. Make sure that the Speakers/Channels are not muted and that the networked hardware is *Online*.
- Check the volume level settings in the *Devices*, *Input-/Output Channels and Speakers* views.
- Check the settings for the *Gate* DSP function in the *Devices*, *Input-/Output Channels and Speakers* views.
- Check the settings for the *X-Over* DSP function in the *Devices*, *Input-/Output Channels and Speakers* views: It is possible that the upper and lower crossover frequencies are set such that no signal is being transmitted.
- If you have created a speaker group (*User-defined Controls > Add Volume Group*), check the volume fader setting.
- Check that you have loaded the correct loudspeaker preset for a particular speaker. Loading the wrong preset can result in restricted playback or damage to the loudspeaker or amplifier.

### **Communication with a device is interrupted.**

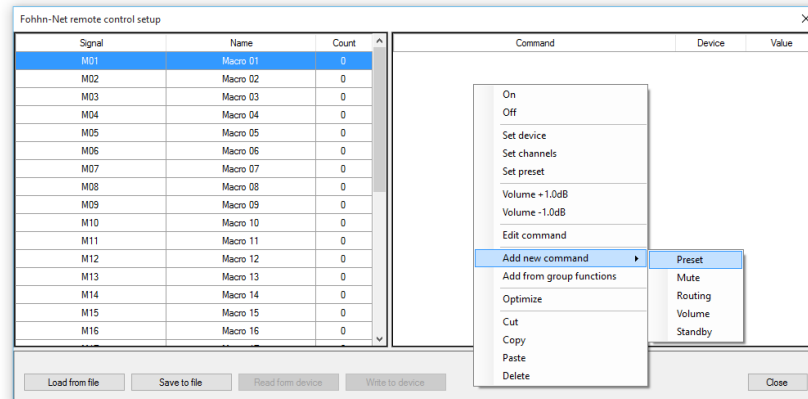
- Check whether the ID allocated to the device in question is also possibly being used by another device. If this is the case, switch off one of the devices, or isolate it from the other **Fohhn-Net** devices and allocate a new ID. You can then return it to the **Fohhn-Net** network.

If your problem has not appeared in the above section, or it has not been rectified after following the suggested solution(s), please contact us at the address on the last page of this manual.

## 6.5 Remote Configuration

Some devices offer you the possibility to switch presets or adjust volume levels using switching contacts or RS-232 commands. These can be configured as shown below. Please also read the user instructions belonging to your **Fohhn-Net** remote device.

1. Select your **Fohhn-Net** device from the Device List in **Fohhn Audio Soft** and, with a right click, choose *Presets*. The *Fohhn-Net Remote Control Setup* window will open:



2. Select a signal, and then right click in the empty space on the right to open the context menu. Using *Add New Command -> Preset*, you can add a new command for loading presets.
3. Choose a **Fohhn-Net** ID and a Preset then click *OK*.

You can configure other signals in a similar way; several commands can be simultaneously implemented for each signal.

Using *Write to Device*, write the new configuration to your **Fohhn-Net** remote device.

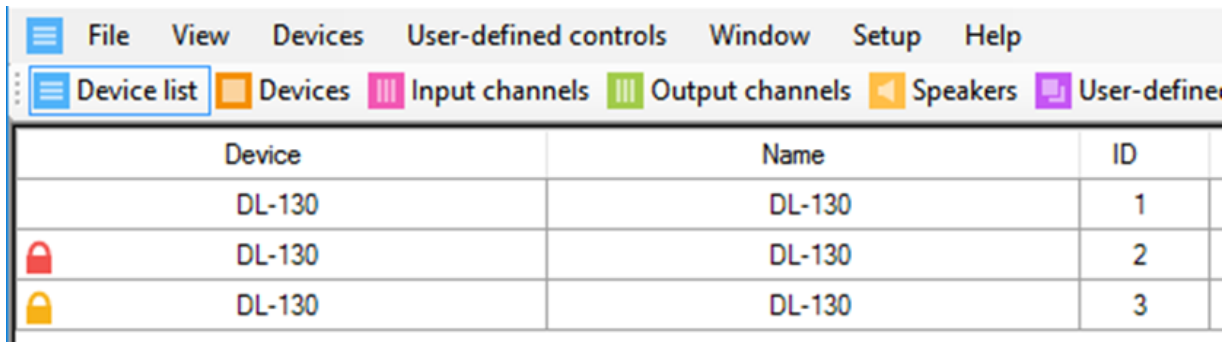
This configuration will not be saved as part of your *Fohhn Audio Soft* project. It must be separately saved using *Save to File*.



To keep a project simple, we recommend working with preset commands only. However, if you are using Mute, Routing or Volume commands, a different means of addressing the **Fohhn** device channels should be considered. For devices that only have DSP functionality on their output channels, the channel can be selected using the „Modified output channels“ option. For devices that have DSP functionality on both their input AND output channels, the channel must be entered as a value in Channel value mode. The first input channel commences after the last output channel. In the case of a device with four input and four output channels, the output channels will have values 1,2,3 and 4, for example, while the input channels have 5,6,7 and 8.

## 6.6 Password Lock

In the *Device List* view, some **Fohhn** devices (and their parameter settings) can be password protected (or locked) to prevent any inadvertent changes. Three different configuration options are possible:

1. **Unlocked:** All parameters can be changed as required.
2. **Completely Locked:** No parameters can be changed.
3. **User Presets:** Only User Presets can be loaded.



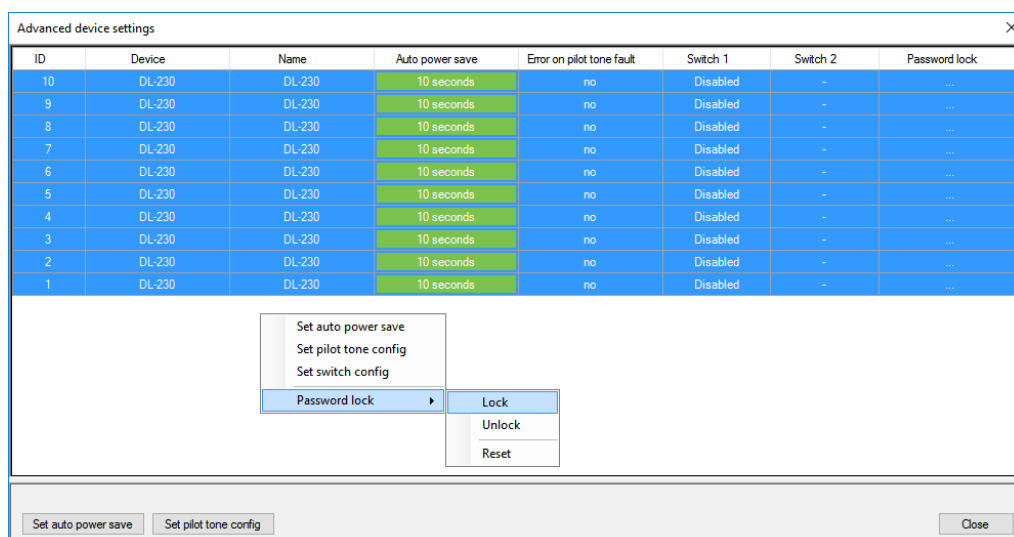
	Device	Name	ID
	DL-130	DL-130	1
	DL-130	DL-130	2
	DL-130	DL-130	3

If a device is locked, this will be shown by a lock symbol in the *Device List*:

- A red lock means *completely locked*.
- A yellow lock means that user presets can still be loaded to the device.

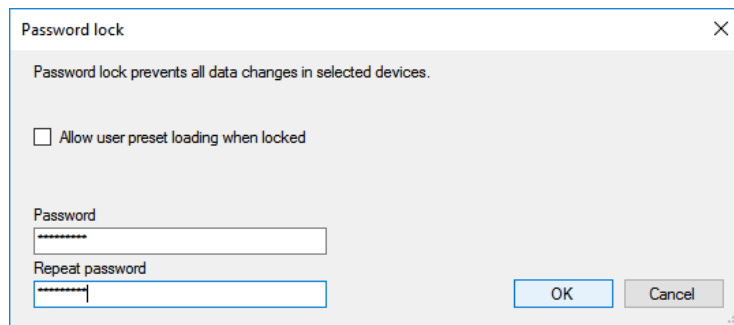
Parameters on a locked device can also be edited in **Fohhn Audio Soft**. However, they can no longer be taken over by the device.

Creating a password protected lock for device settings is done from within the *Device List* view, using the *Settings* command in the context menu. In the newly opened *Advanced device settings* dialog, you can then lock/unlock the devices using the *Password lock* menu option.



### 6.6.1 Setting a Password Lock

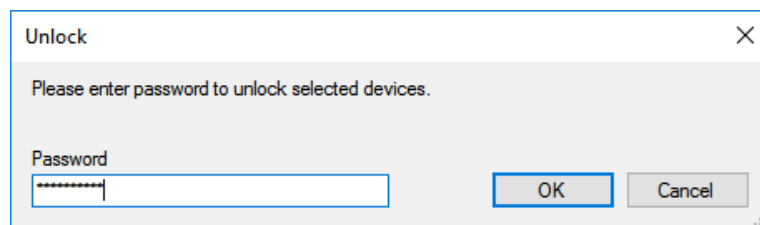
The *Lock* command in the context submenu enables all selected devices to be simultaneously locked. As an option, you can still allow saved user presets to be loaded when the device is locked.



Having confirmed the dialog entry with *OK*, the device's new status – *Locked* - will then be displayed. From this point it will no longer be possible to make any additional changes to the device settings.

### 6.6.2 Cancelling Password Lock

The *Unlock* command in the context submenu enables all selected devices to be simultaneously unlocked.



### 6.6.3 Password Reset (if password is forgotten)

To reset a password you will need access to both the device management, via **Fohhn Audio Soft**, and the device's power supply, i.e. its power switch.

Select *Password lock* -> *Reset*, then follow the instructions in **Fohhn Audio Soft**.

## 6.7 Disclaimer and Copyright

### 6.7.1 Disclaimer

The contents of this user manual have been created with great care. However, **Fohhn Audio AG** cannot guarantee that the information therein (images, text and other representations) is always complete, correct and current. **Fohhn Audio AG** therefore reserves the right to make changes or additions to the given information at any time. Neither **Fohhn Audio AG** (as a public limited company), nor its Executive Board or employees takes any responsibility for direct or indirect damage, including loss of profit, which arises as a result of, or in connection with, the information in this manual.

### 6.7.2 Copyright

This manual as a whole, including its contents and works is, as such, subject to German copyright law. The reproduction, editing, distribution and any other kind of use outside the limits of the copyright requires the written consent of **Fohhn Audio AG**.

## 6.8 Trademarks

All trademarks, trade names or company names appearing here are, or may be, trademarks or registered trademarks of their respective owners. All right are reserved, with the exception of those specifically granted.

In the absence of an explicitly labelled registered trademark, it cannot be concluded that a name is free of third-party rights.

## 6.9 Contact Address

### **Fohhn Audio AG**

Hohes Gestade 3-8  
72622 Nürtingen  
Deutschland

Telephone           +49 7022 93323-0  
Fax                   +49 7022 93324-0

Web:                 [www.fohhn.com](http://www.fohhn.com)  
E-Mail:              [info@fohhn.com](mailto:info@fohhn.com)