

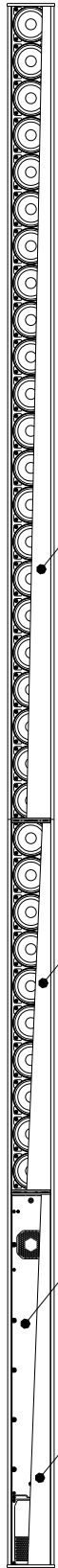


Linea Focus

DLI-430 (mobile)

2D drawings

Vorderansicht/
Front view



Stahlgitter,
mit Akustikschaum
hinterlegt/
Steel grille, backed
by acoustically
transparent foam

Stahlgitter,
mit Akustikschaum
hinterlegt/
Steel grille, backed
by acoustically
transparent foam

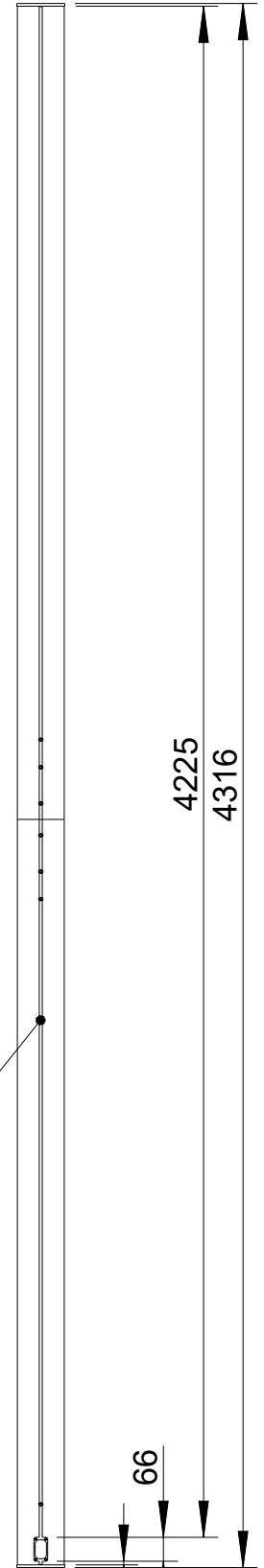
Kühlkörper/
Cooling element

Stahlgitter,
mit Akustikschaum
hinterlegt/
Steel grille, backed
by acoustically
transparent foam

Seitenansicht/
Side view



Rückansicht/
Rear view

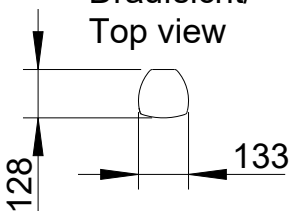


4225
4316

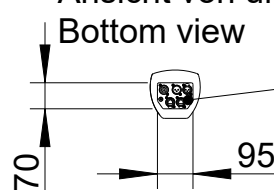
T-Nut für
Nutensteine M6/
T-slot for
slot nuts M6

10
66

Draufsicht/
Top view



Ansicht von unten/
Bottom view



Anschlussfeld
z.B. DLI-430 M Analog/
Connector panel
e.g. DLI-430 M Analog

All data and dimensions are subject to change

DLI-430 M
1350-xxxxx

Fohhn Audio AG
Großer Forst 15
72622 Nuertingen
Germany

Phone +49 7022 93323-0
Fax +49 7022 93324-0
www.fohhn.com
info@fohhn.com

