

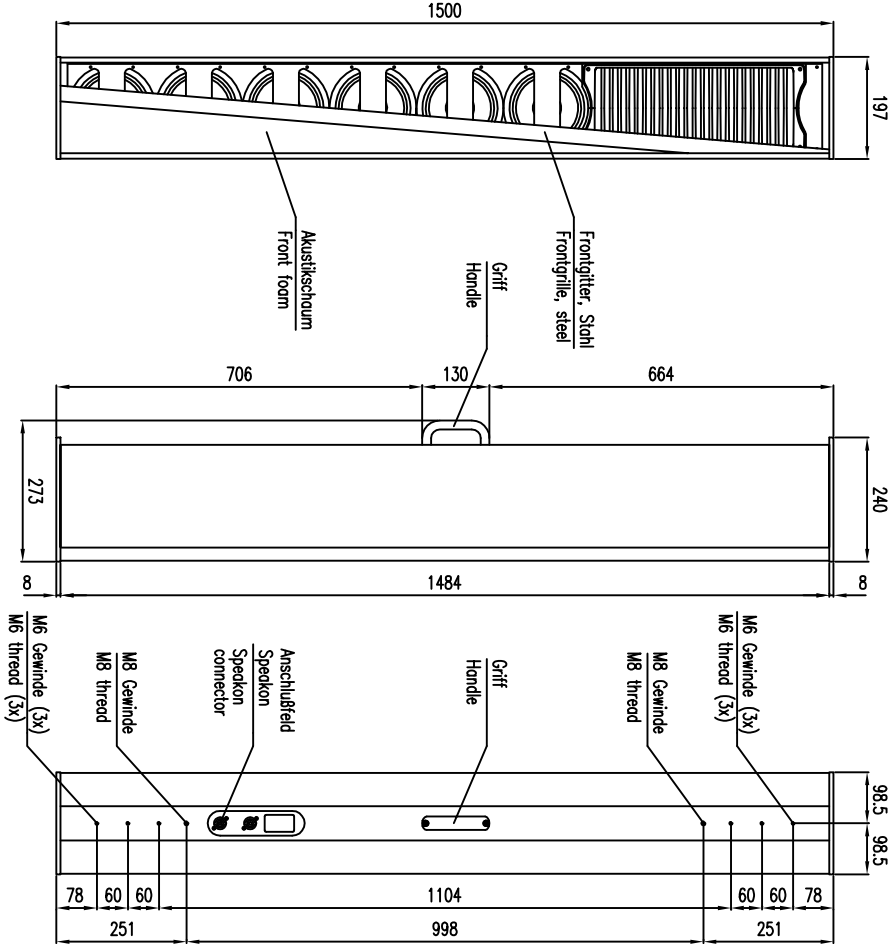


Fohhn

2D drawings

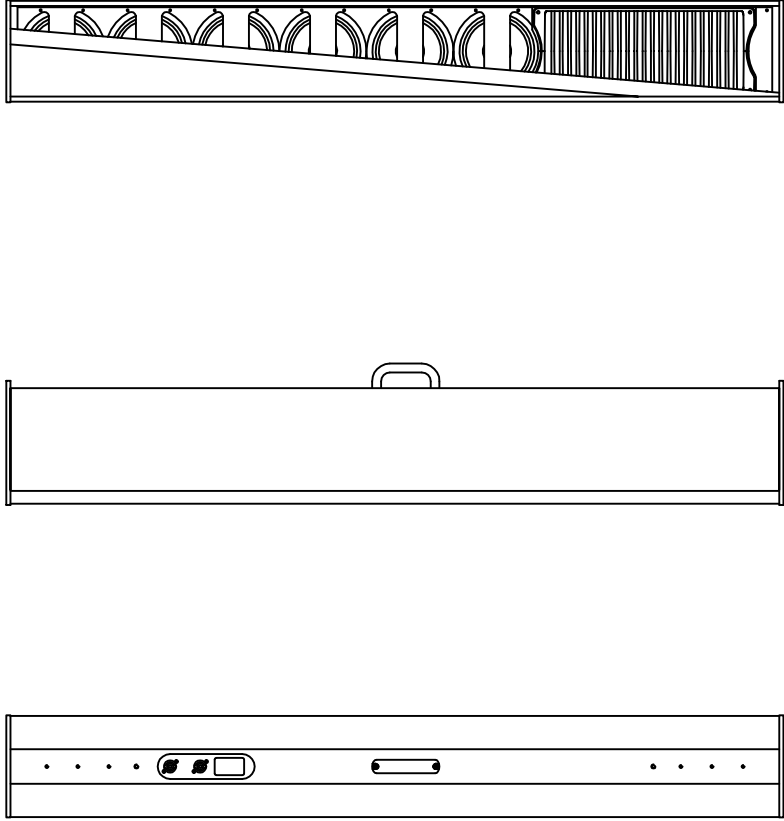
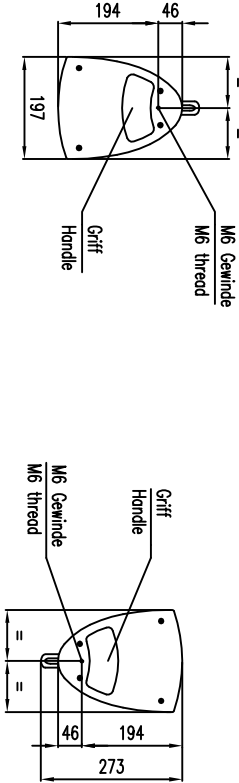
Linea

LX-601



Draufsicht / Top view

Ansicht von unten / Bottom view



Draufsicht / Top view

Ansicht von unten / Bottom view



LX-601

L-1206-P0000

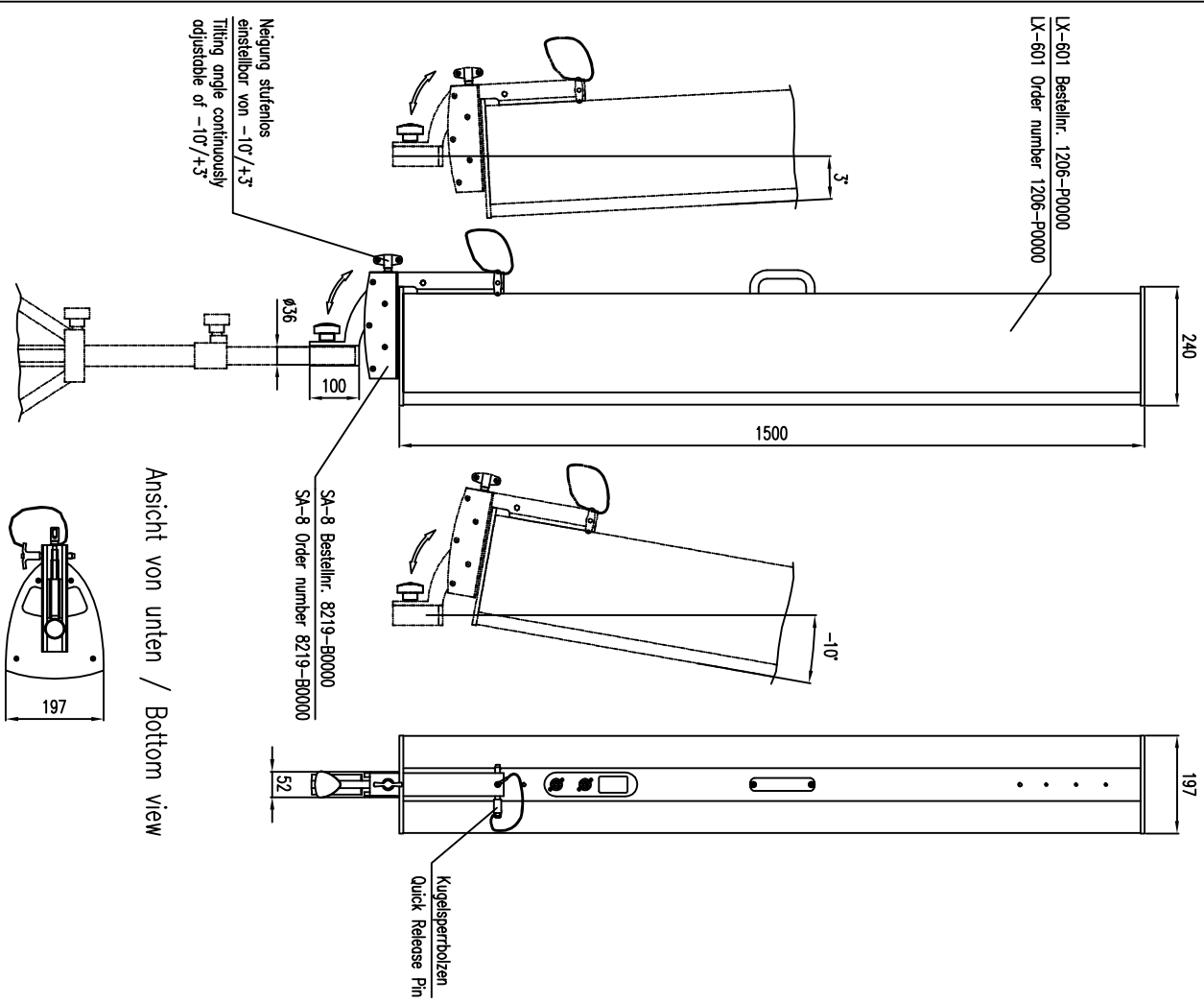


LX-601

L-1206-P0000

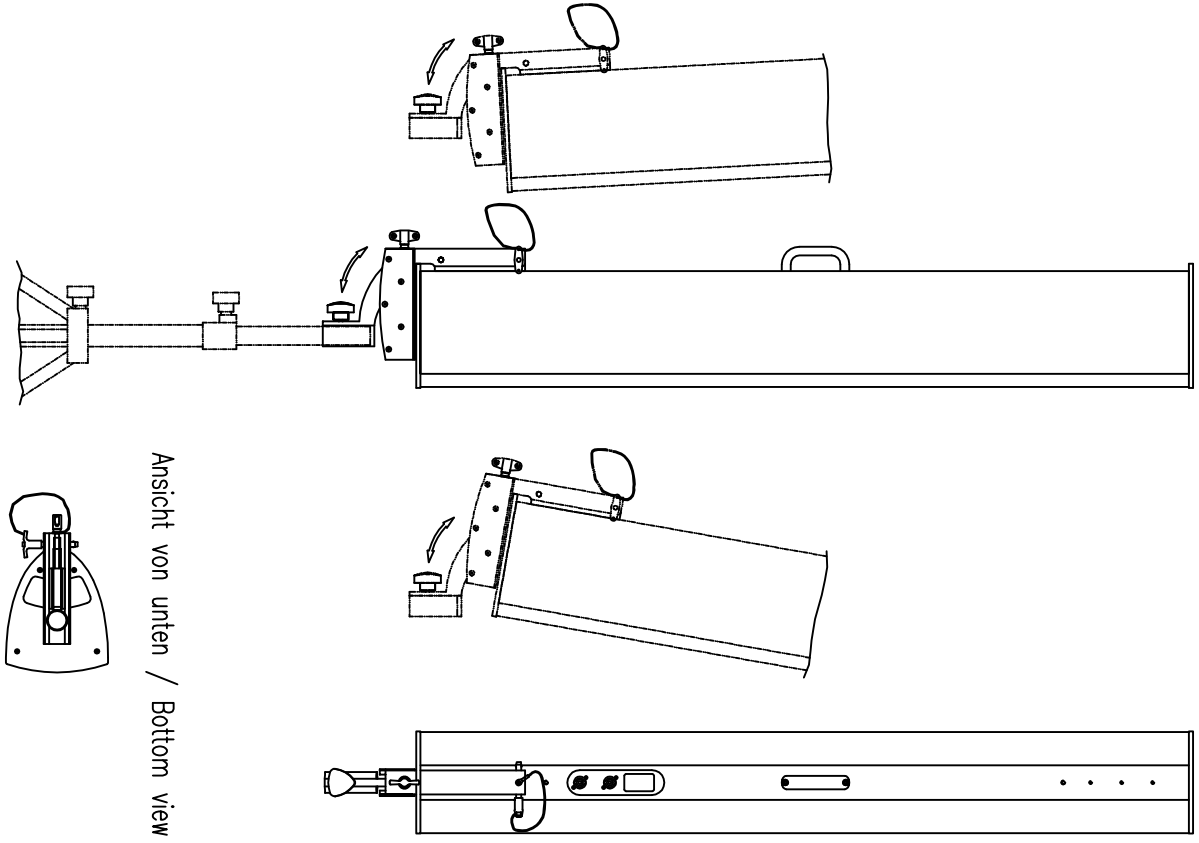
Seitenansicht / Side view

Rückansicht / Rear view



Seitenansicht / Side view

Rückansicht / Rear view



LX-601 & SA-8

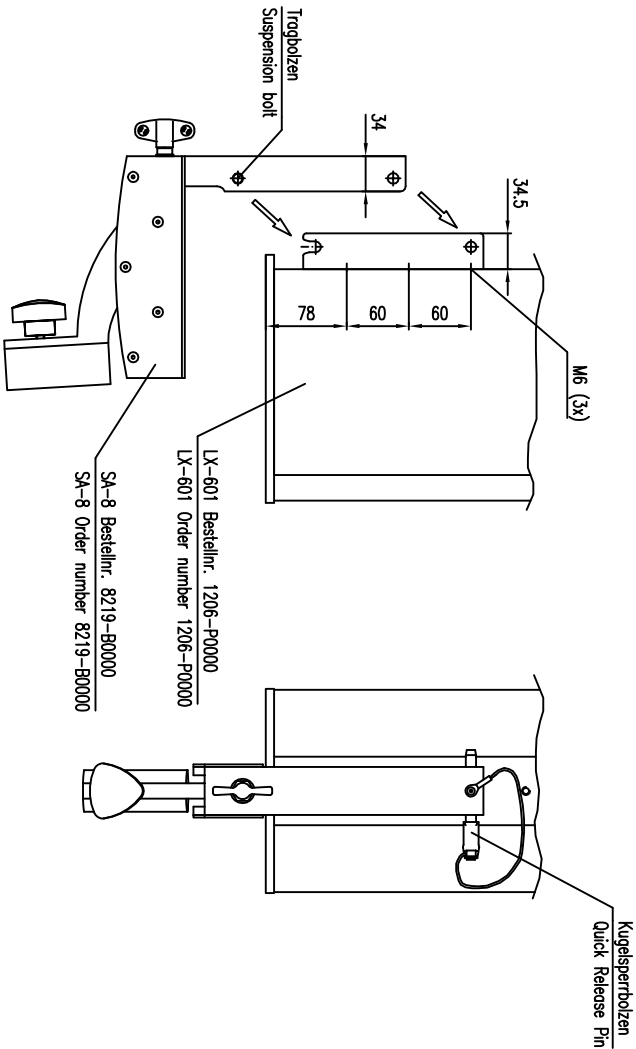


LX-601 & SA-8

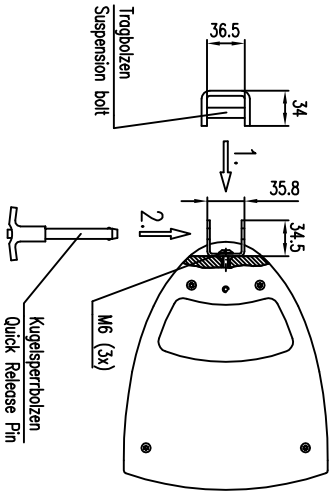
Detailsicht LX-601 und SA-8/ Detail view LX-601 and SA-8

Seitenansicht / Side view

Rückansicht / Rear view



Ansicht von unten / Bottom view



1. SA-8 mittels Trogbolzen einhängen /
Via suspension bolt connect SA-8
2. mit Kugelsperbolzen verriegeln /
Lock with Quick Release Pin

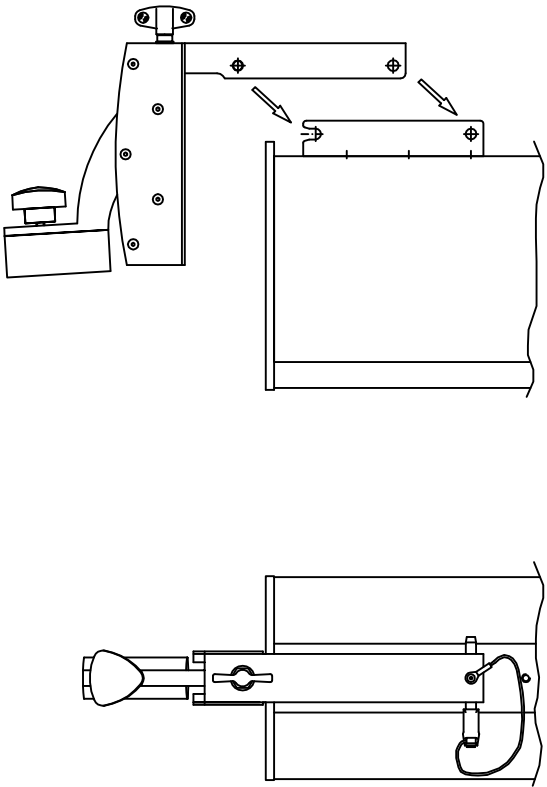


LX-601 & SA-8

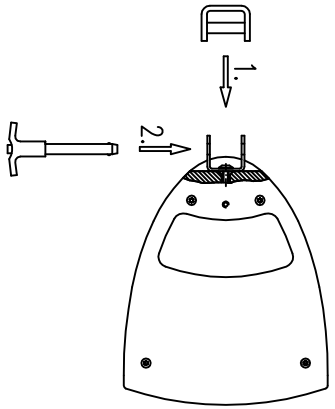
Detailsicht LX-601 und SA-8/ Detail view LX-601 and SA-8

Seitenansicht / Side view

Rückansicht / Rear view



Ansicht von unten / Bottom view



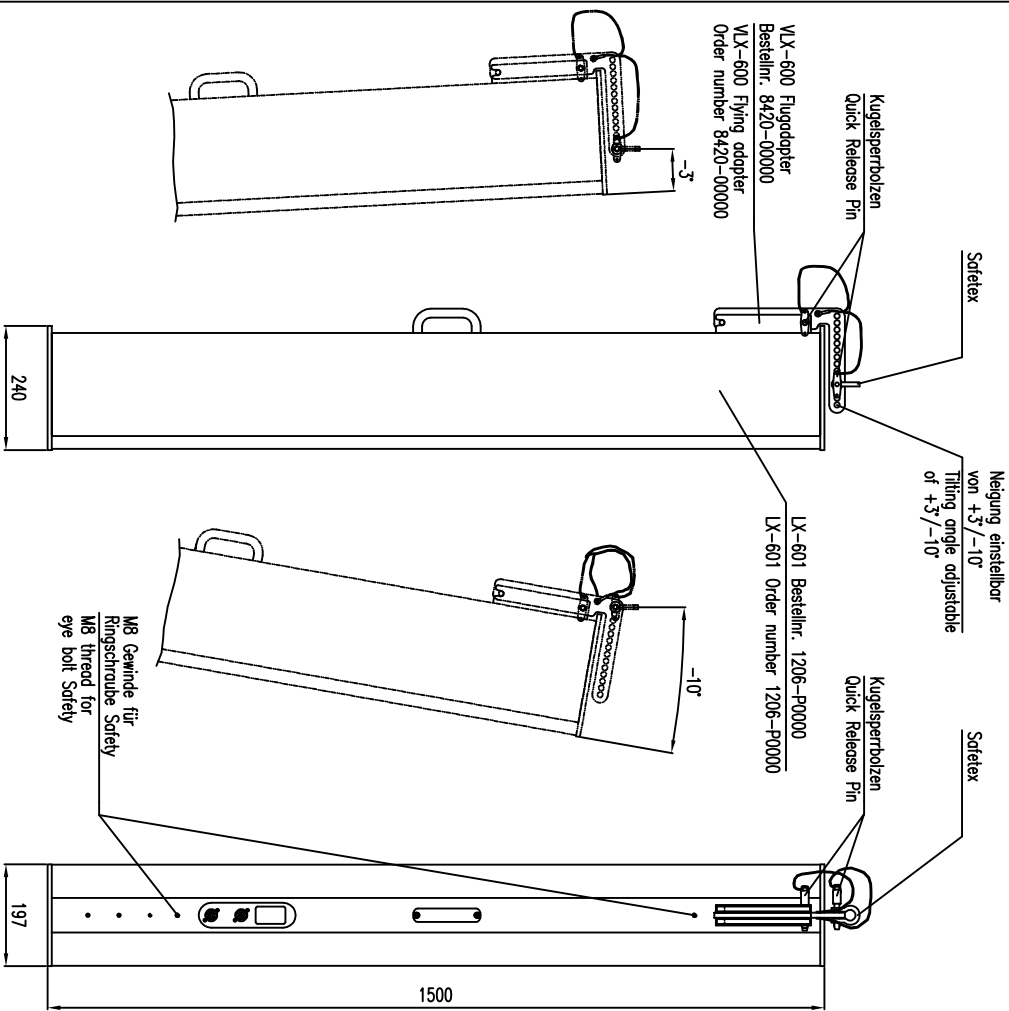
1. SA-8 mittels Trogbolzen einhängen /
Via suspension bolt connect SA-8
2. mit Kugelsperbolzen verriegeln /
Lock with Quick Release Pin



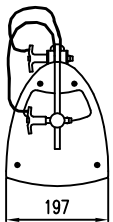
LX-601 & SA-8

Seitenansicht / Side view

Rückansicht / Rear view



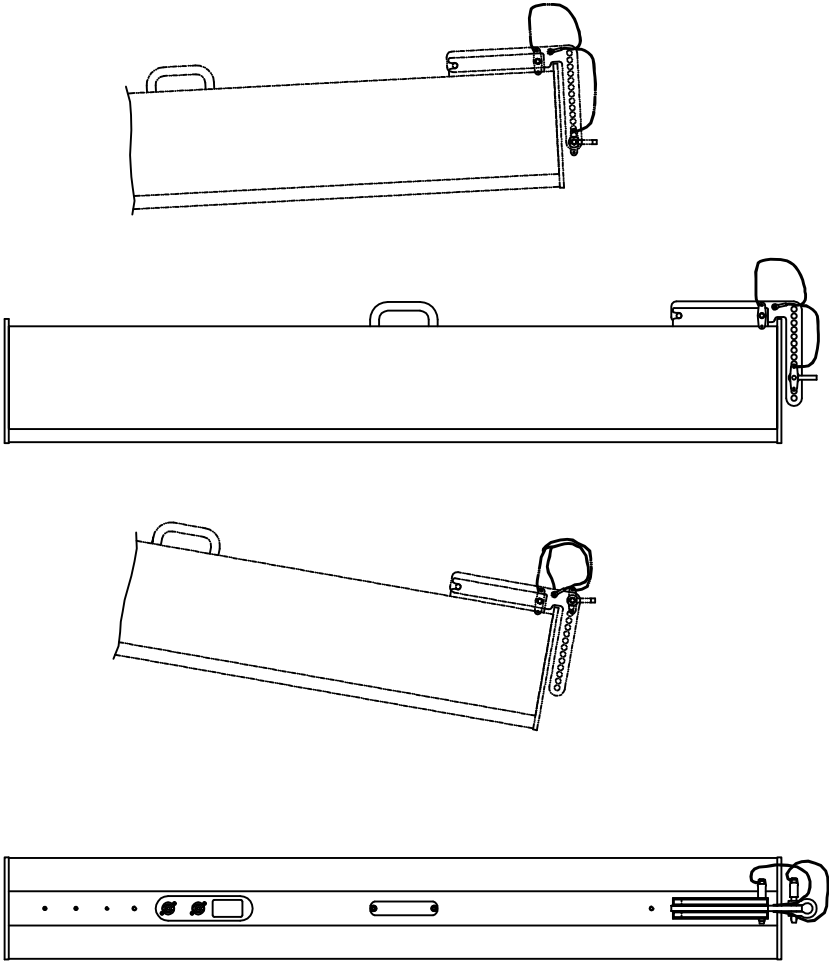
Ansicht von oben / Top view



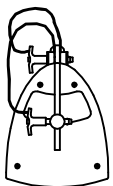
LX-601 & VLX-600 & Safetex

Seitenansicht / Side view

Rückansicht / Rear view



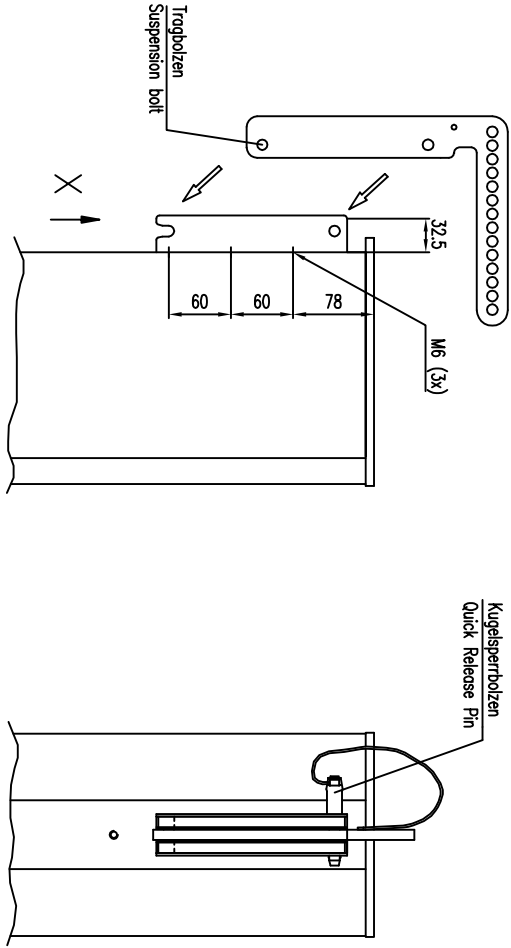
Ansicht von oben / Top view



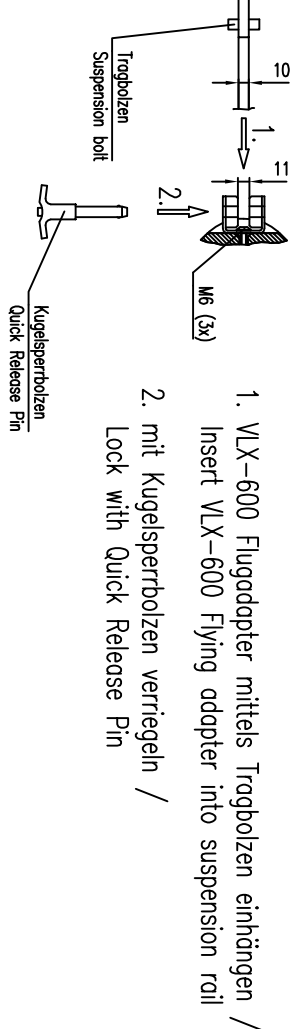
LX-601 & VLX-600 & Safetex

Seitenansicht / Side view

Rückansicht / Rear view

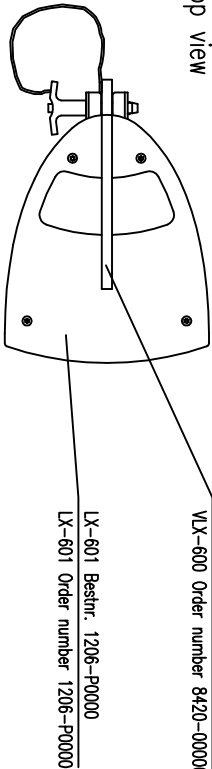


Ansicht X / View X



Ansicht von oben /
Top view

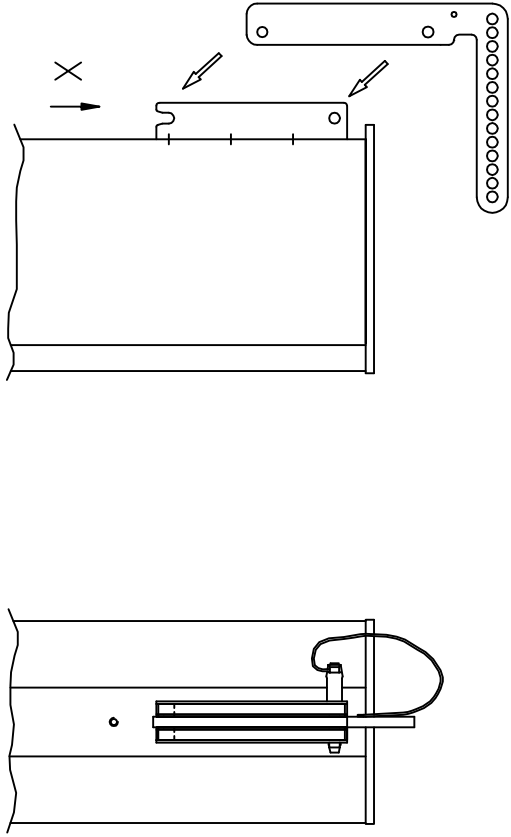
VLX-600 Bestnr. 8420-00000
VLX-600 Order number 8420-00000



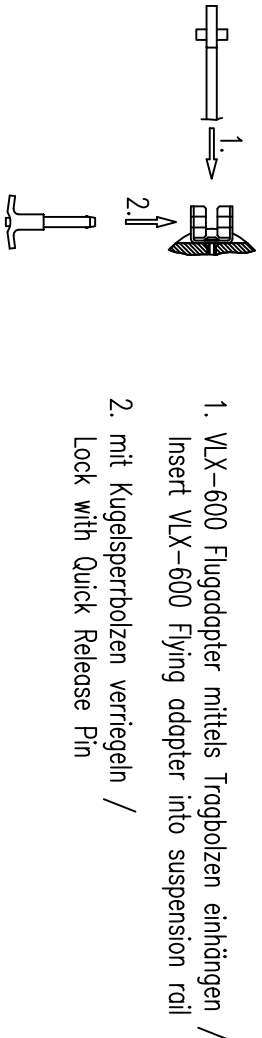
LX-601 & VLX-600

Seitenansicht / Side view

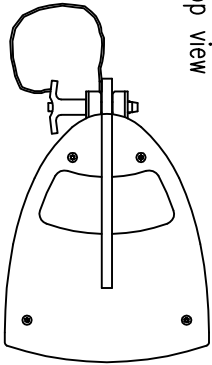
Rückansicht / Rear view



Ansicht X / View X



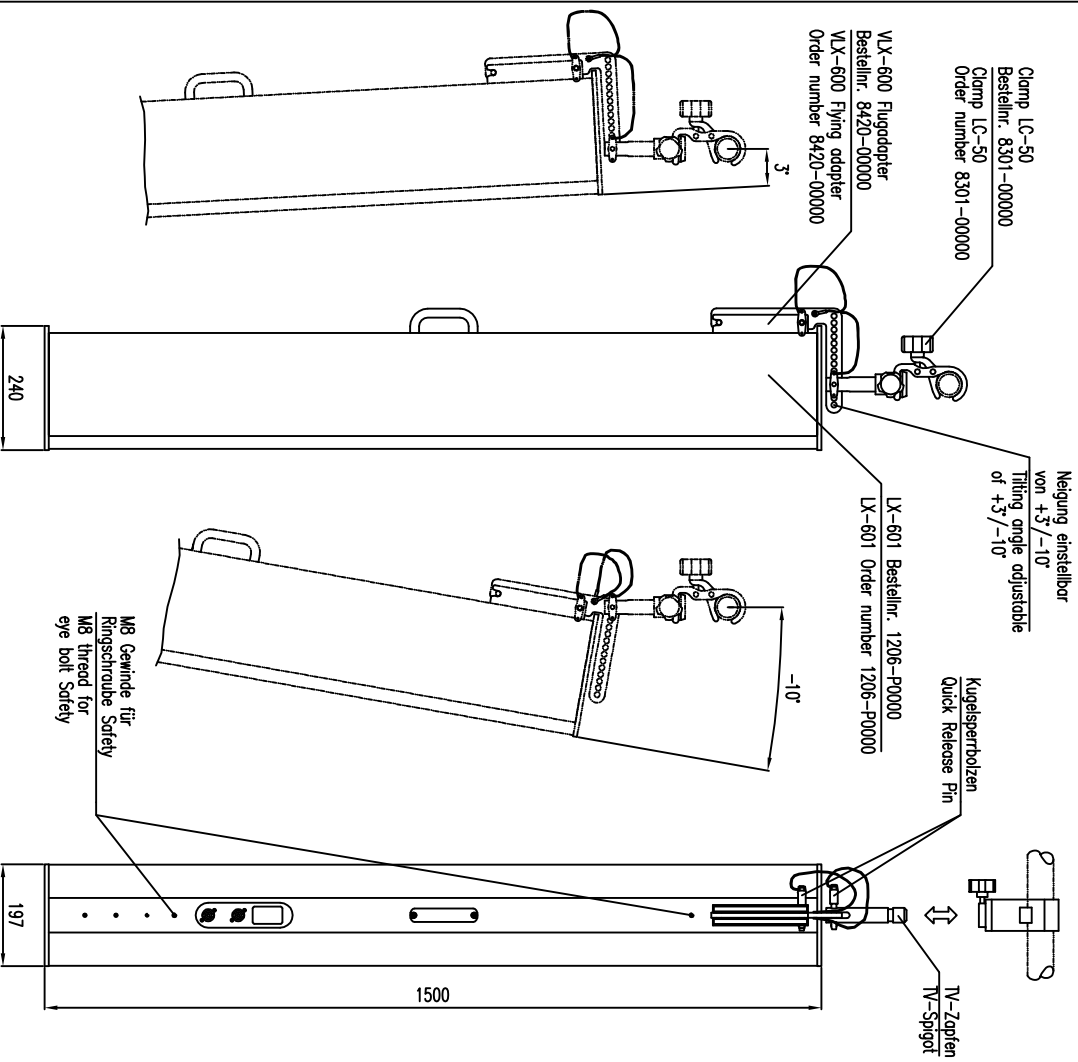
Ansicht von oben /
Top view



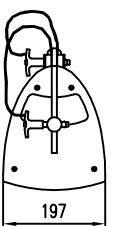
LX-601 & VLX-600

Seitenansicht / Side view

Rückansicht / Rear view

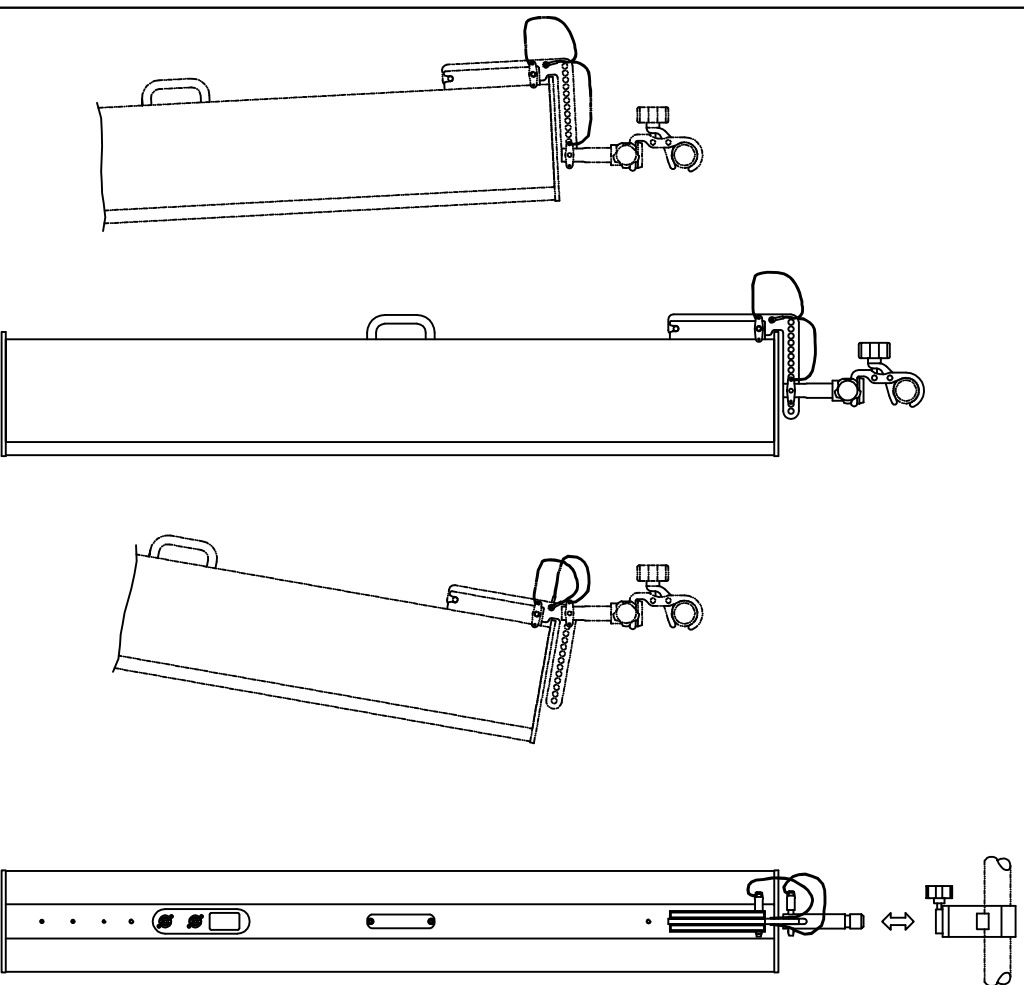


Ansicht von oben / Top view

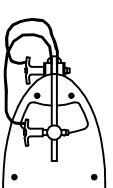


Seitenansicht / Side view

Rückansicht / Rear view



Ansicht von oben / Top view



LX-601 & VLX-600 & Clamp



LX-601 & VLX-600 & Clamp

Fohhn Audio AG
Großer Forst 15
72622 Nuertingen
Germany

Phone +49 7022 93323-0
Fax +49 7022 93324-0
www.fohhn.com
info@fohhn.com

