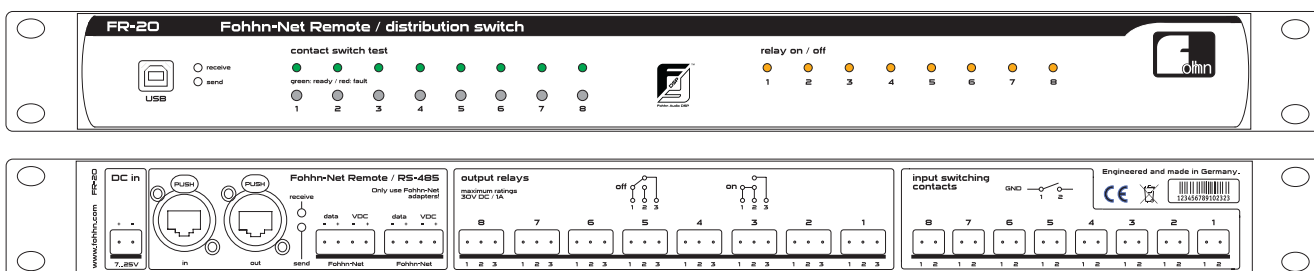


Net Remote-Series

Fohhn Control Network.



FR-20 distribution switch



The FR-20 is a 19" remote control unit for operating Fohhn DSP amplifiers, DSP controllers and active Fohhn speaker systems.

Description

The FR-20 can be controlled via conventional external buttons or switches (e.g. Jung, Vitra, etc.) or switching contacts (e.g. media control system). Buttons and switches may come in the form of a wall installation module or an individually manufactured control panel, for example.

Presets stored in the connected Fohhn DSP devices are activated simultaneously and settings for different scenarios such as speech, music, empty room, full room, etc are loaded when the buttons/switches are pressed. You can also adjust the volume quickly and easily in 1 dB increments using the FR-20. A maximum of 31 Fohhn devices connected to the network can be activated simultaneously at the press of a single button.

Overview of advantages

- simple, reliable control of audio systems from one central location, also suitable for technically inexperienced end users
- conventional buttons and switches (e.g. Jung; Vitra, etc.) or individual control panels can be connected to the FR-20 to control any Fohhn DSP device.
- relay outputs with feedback signal function to confirm successful execution of command
- installer for simple FR-20 configuration and setup
- low purchase price and cost-effective installation
- outstanding manufacturing quality „Made in Germany“
- warranty and service from a German manufacture

Integration in media control system

The FR-20 allows the convenient integration of all DSP-controlled Fohhn devices into media control systems (e.g. AMX, Crestron) and offers 2 control options:

1. One switching output (relay) on the media control system is connected to the input contacts on the FR-20.

2. FR-20 connected to a media control system via a RS-485 interface. The relevant protocol (Fohhn-Net) is available from Fohhn.

8 relay outputs for maximum control

The FR-20 is equipped with 8 relay outputs for activating LEDs on control panels to indicate the preset/scenario currently in use, for example. Feedback signals confirming successful execution of commands are issued via the relay outputs. The panel has an additional monitoring function that makes an important contribution to maximising system reliability

Integration in a EIB bus technology

One building, one concept, one system.

Fohhn systems equipped with a FR-20 distribution switch comply with the „European installation bus technology“ standard, including all operating comforts.

The relay contacts in the distribution box control the 8 make contacts of the FR-20 Fohhn-Net Remote and enable easier integration in other bus systems as a result.

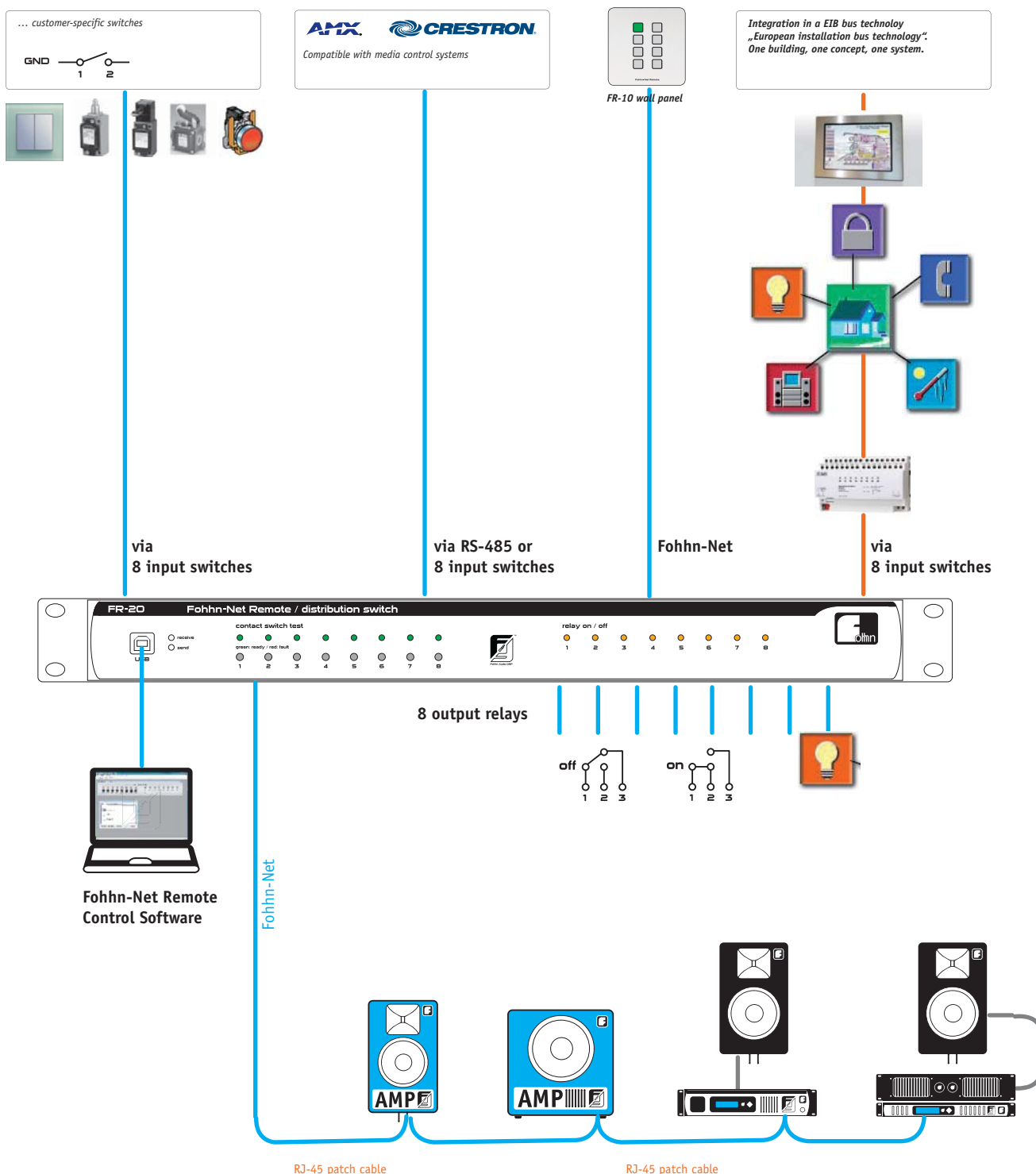
Applications

The FR-20 is ideal for training rooms, hotels, churches, halls, restaurants, clubs, bars and many other venues.

For simple, reliable remote operation of your audio system without having to install complex, expensive media control systems.

Overview chart

The system: An intuitive way of simplifying your daily sound applications, producing top-quality sound and keeping all your sound systems under control. Remote control options, amplifiers, DSP technology and speakers.



FR-20 distribution switch

Configuration

The FR-20 can be installed and configured in just a few minutes without any special knowledge of programming. Intuitive configuration software is supplied with the device free of charge.

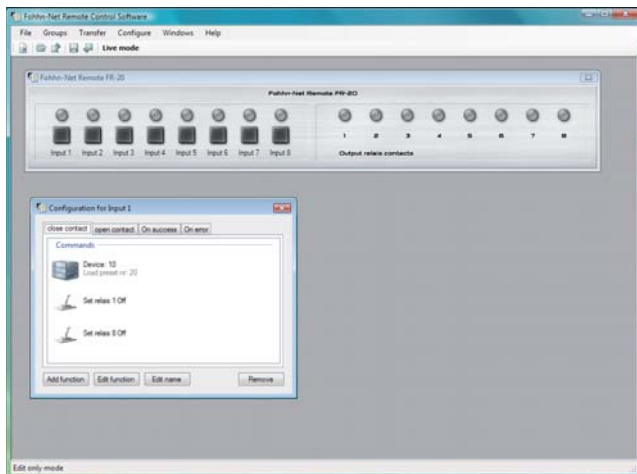
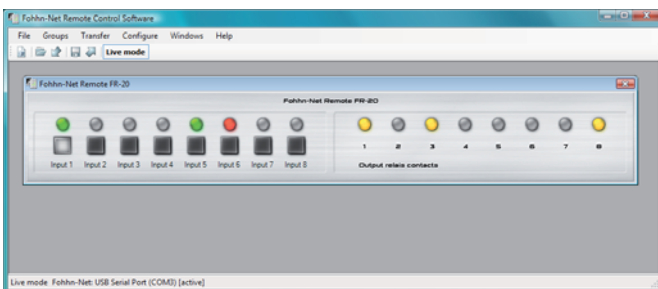


Bild: Fohhn-Net Remote Control Software

Live mode / FR-20 simulation using software

Pressing the "Live Mode" button in the software toolbar allows you to simulate the FR-20 using the software. The software FR-20 now behaves in the same way as the actual wall panel so you can test all the functions.

Requirement: the PC must be connected with the Fohhn-Net via a Fohhn-Net USB adapter NA-1, for example.



The button turns green if all commands assigned to a button can be executed successfully, whereas if a command fails, the button turns red.

Once everything is working correctly, you can transfer the settings to the FR-20.