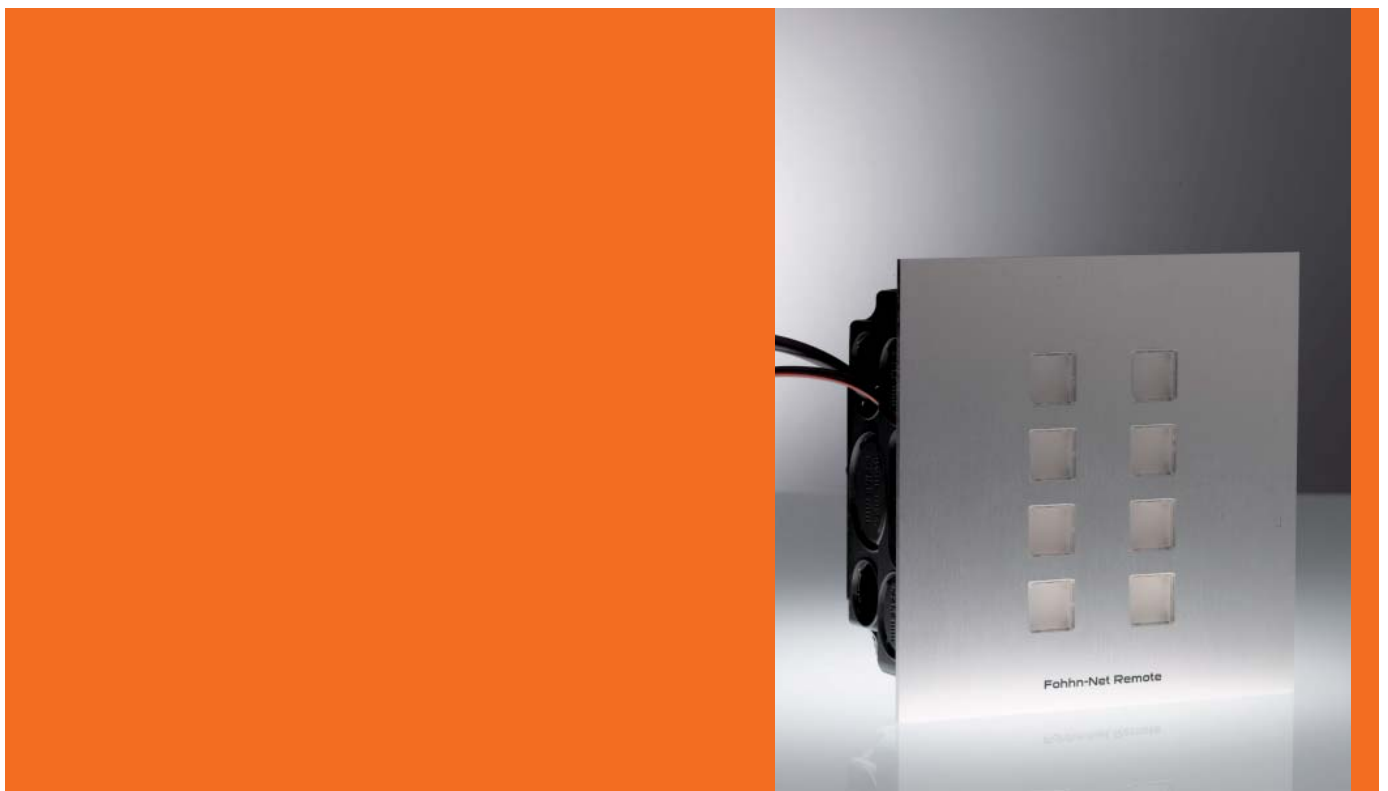


Net Remote-Series

Fohhn Control Network.



FR-10 remote control wall panel



The FR-10 is a wall mount remote control module designed for the remote operation of Fohhn DSP amplifiers, DSP controllers and active Fohhn speakers systems.

Description

The FR-10 is a wall mount remote control module designed for the remote operation of Fohhn DSP amplifiers, DSP controllers and active Fohhn speakers systems. The FR-10 is extremely easy to operate because the controls are so well arranged. It is virtually impossible for the end customer to make operating errors because the only operating elements are the 8 labelled buttons.

Easy handling

You can centrally control a maximum of 31 devices via 8 illuminated buttons, whereby presets stored in connected Fohhn devices are activated simultaneously and settings for different scenarios such as speech, music, empty room, full room, etc are loaded at the press of a button.

You can even adjust the volume quickly and easily in 1 dB increments using the FR-10.

The FR-10 is extremely easy to operate because the controls are so well arranged. It is virtually impossible for the end customer to make operating errors because the only operating elements are the 8 labelled buttons.

Applications

The FR-10 is ideal for training rooms, hotels, churches, halls, restaurants or any venue where a simple, efficient system is required to control your audio equipment from a central location.

The FR-10 is also ideal for projects where complex media control systems are not viable or inappropriate, but the user wishes to control the speaker system centrally.

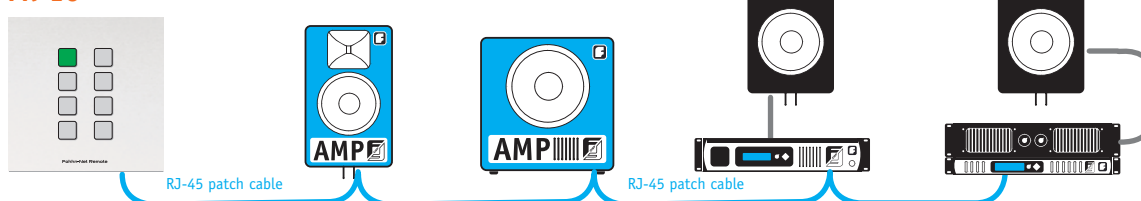
Overview of advantages:

- simple, reliable control of audio systems from one central location, also suitable for technically inexperienced end users
- all 8 buttons can be assigned and labelled individually according to customer requirements
- elegant design, front section made of brushed aluminium
Dimensions WxH: 120x120 mm
- illuminated buttons with automatic feedback signal confirming successful execution of command
- installer for simple configuration and setup of the FR-10
- low purchase price and cost-effective installation
- outstanding manufacturing quality „Made in Germany“
- warranty and service from a German manufacturer

Special feature

Signal confirming that all commands have been executed successfully. The button colour changes (red or green) when the button is pressed to indicate whether the command has been executed successfully or not. If a connected device is not switched on, for example, the button turns red to indicate that the command could not be executed. **The panel has an additional monitoring function to help achieve maximum operating reliability.**

FR-10



FR-10 remote control wall panel

Configuration

The FR-10 can be installed and configured in just a few minutes without any special knowledge of programming. Intuitive configuration software is supplied with the device free of charge.

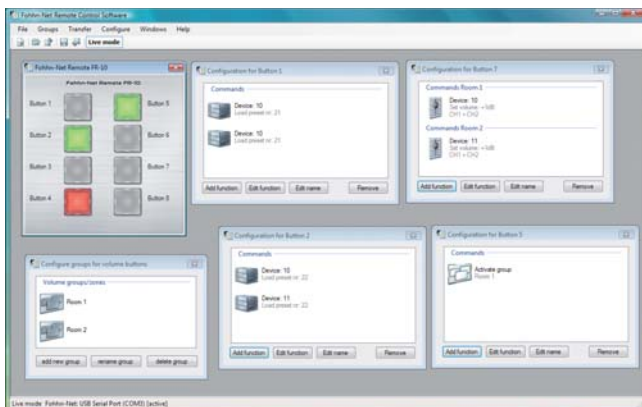
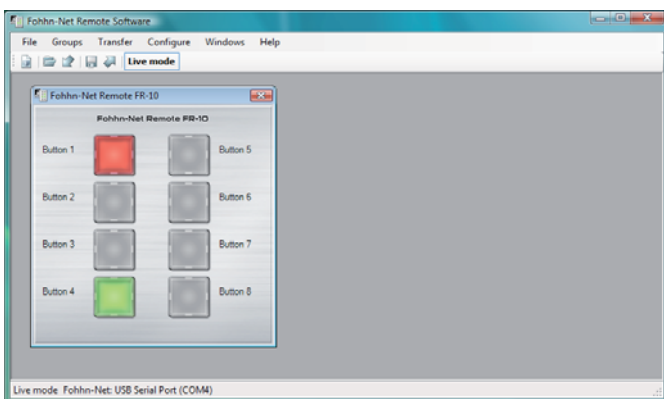


Figure: Fohhn-Net Remote Control Software

Live mode / FR-10 simulation using software

Pressing the "Live Mode" button in the software toolbar allows you to simulate the FR-10 using the software. The software FR-10 now behaves in the same way as the actual wall panel so you can test all the functions.

Requirement: the PC must be connected with the Fohhn-Net via a Fohhn-Net USB adapter NA-1, for example.



The button turns green if all commands assigned to a button can be executed successfully, whereas if a command fails, the button turns red.

Once everything is working correctly, you can transfer the settings to the FR-10.

Power adapter

The FR-10 requires a 7-25V power supply at a minimum of 100mA. Either connect the supply directly to the relevant terminals or acquire the supplied power adapter FRP-10 from Fohhn.



Figure: FRP-10 power adapter for FR-10

Assembly and installation

The FR-10 will be fixed in a supplied recessed wall junction box 100x100 mm. The network can be connected via an RJ-45 connecting socket (e.g. ISDN / network socket) or RJ-45 connector.