



**100%**  
PERFORMANCE

# PERFORM PT-6

## COMPACT HIGH PERFORMANCE PLUG-AND-PLAY LOUDSPEAKER SYSTEM WITH INTEGRATED LINE ARRAY TECHNOLOGY FOR STAND-MOUNTED, STACKED OR FLOWN APPLICATIONS.

The PT-6 has a twin coaxial speaker construction. Six 6.5" low-mid long excursion speakers offer a low cut-off frequency and more powerful performance. Three high performance 1.4" compression drivers and a specially developed HF phase EQ ensure crystal clear, precise reproduction of high frequencies.

A vertical dispersion angle of 30° guarantees excellent results even in venues with challenging acoustics, while a 110° horizontal dispersion angle makes the loudspeaker ideal for a wide range of sound reinforcement applications in venues such as festival tents, clubs and concert halls, as well as at open-air events.

Designed as a bi-amping system, the PT-6 is geared towards use with Fohhn's 4-channel D-4.1200 DSP amplifier. This ensures the best possible sound performance and maximum operating reliability, as well as simple plug-and-play connection.

## THE MAIN FACTS AT A GLANCE

- Compact plug-and play system with integrated line array technology
- 6 x 6.5"/3 x 1.4" neodymium speakers with Waveguide. 2-way bi-amping technology
- Very high performance capability, powerful sound
- Enormous reach, extremely directional beam (30° vertical)
- Low weight, compact dimensions, easy to transport
- Easy handling, very short set-up time
- Safer stand use/flown applications due to sophisticated retaining bracket
- Geared for use with D-4.1200 DSP-controlled amplifier, presets for D-2.1500 and FC-8 controller

## APPLICATIONS

→ PT-6 is an ideal system for small open air events, festivals, live music, town halls, marquees, clubs etc.

## ARTICLE NUMBER

BLACK	1505-P0000
WHITE	1505-H0000

THIS TIME, EVEN WE'RE  
**SURPRISED**  
BY THE POWER OF OUR  
**OWN PRODUCT!**



*When we began developing the PT-6, we didn't want to build another horn-loaded PA system to fill the gap between conventional loudspeakers and modular line arrays. Instead, we took three of our PT-8 line array modules, put them in a compact housing and added state-of-the-art loudspeaker technology. The first time we powered up the system, we were absolutely amazed at its performance capability.*



# PERFORM PT-6

COMPACT PLUG-AND-PLAY SYSTEM WITH LINE ARRAY TECHNOLOGY.

## TRULY VERSATILE.

→ Whether stand-mounted, flown or stacked, the multifunctional VPT-6 universal bracket enables the PT-6 to be quickly and securely set up. The bracket allows the speaker's inclination angle to be minutely adjusted between  $\pm 25^\circ$ .

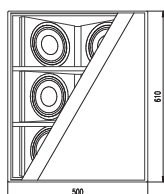
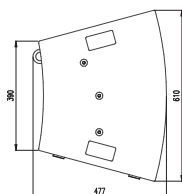
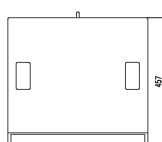
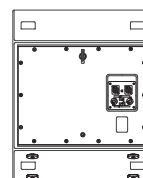


### → PT-6 in combination with subwoofers

To add extra low end, we recommend combining the PT-6 with a Fohhn PS-9 active subwoofer, or an XS-4 active/passive sub. Fohhn DSP processor technology enables perfect alignment of the systems.

### → PT-6 and LX-11: Ultra high performance meets ultra compact.

PT-6: „I'm your father!"

**Front view**

**Side view**

**View from above**

**Rear view**

**AM-20**

**Clamp LC-50**

**TV spigot 30**

**SA-3**

**VPT-6**

**Electro-acoustical features**

Acoustic design	2-way biamped full-range twin-coaxial curved array system, vented/hornloaded
Components <sup>[*]</sup>	6x 6,5" long excursion transducers, 3x 1,4" compression drivers on Waveguide, all speakers hornloaded, neodymium magnets
Power rating (nominal) <sup>[1]</sup>	900 W/210 W
Power rating (program) <sup>[2]</sup>	1800 W/420 W
Power rating (peak) <sup>[3]</sup>	3600 W/840 W
Sensitivity <sup>[4]</sup>	101 dB/114 dB
Maximum SPL <sup>[3]</sup>	135 dB/138 dB
Frequency range <sup>[5]</sup>	65 Hz – 20 kHz
Nominal dispersion (h x v) <sup>[6]</sup>	100° x 30°
Nominal impedance	6 Ohm/24 Ohm

**Features**

Enclosure	birch plywood
Protection grille	steel, ball impact resistant, powder coated
Rigging points	6x M10 & 2x M8 threads
Suspension points	6x M10, 2x M8 thread
Connections	2x Neutrik NL4 Speakon
Standard colour	scratch-proof polyurethane coating, black
Front design	acoustically transparent foam in enclosure colour
Dimensions (W x H x D)	500 x 610/390 x 455 mm
Weight <sup>[7]</sup>	39 kg

**Optional features**

Integrated 100 V-transformer	not available
Optional colours	all RAL colours
Weather resistance	impregnated speaker membranes

**CAAD simulation data** EASE

The manufacturer reserves the right to make technical modifications according to legal regulations stipulating the continual improvement of product features. [1] according to IEC-60268-5 long term, [5] -10 dB under anechoic halfspace-conditions, [2] according to IEC-60268-5 short term, [6] horizontal x vertical at -6 dB, averaged 1-4 kHz, [3] Peak, 20 ms with bandpass filtered pink noise signal according to IEC 60268-2 at one octave above the lower limit of the frequency range. [7] net weight without optional equipment, [4] 2,83 V at 8 ohms (2 V at 4 ohms, 4 V at 16 ohms) at a distance of 1 metre under anechoic fullspace conditions, [\*] Intelligent Protection Circuit. Voltage-controlled semiconductor circuit protecting the HF-driver against overload highly effective and with very short attack time.



**FULL CONTROL**

**FOR PERFECT SOUND.**

**USER-FRIENDLY CONCEPT**

Like all Fohhn systems, the DSP-controlled D-4.1200 digital amplifier can be intuitively controlled and monitored via laptop, in real time.

100%  
POWER



# D-4.1200 AMPLIFIER

## IN A CLASS OF ITS OWN: THE NEW DSP-CONTROLLED, 4-CHANNEL D-4.1200 AMPLIFIER.

Fohhn is pleased to introduce the latest addition to its range of high performance, DSP-controlled multi-channel amplifiers – the new D-4.1200. The amp has been specially developed to guarantee the highest standards of audio quality and reliability. Fohhn DSP amplifiers ensure excellent sound quality and reliable operation, as well as offering a range of options for intelligently adapting your sound system to fit the room acoustic. Weighing just 11.1kg and occupying 2U of rack space, the CLASS D amplifier is extremely compact. It has a power rating of 4x 1200W/4 Ohm and runs very quietly. A major feature is the integration of Fohhn Audio DSPs.

## THE MAIN FACTS AT A GLANCE

- 4 input channels
- 4 amplifier outputs 1200 W/4 Ohm each (output channels 1-4)
- 2 DSP aux outputs (output channels 5 and 6)
- State-of-the-art CLASS D amplifier technology
- Integral Fohhn DSPs guarantee optimum sound performance
- 5 top-class audio tools e.g. integrated parametric EQ
- Integral loudspeaker database for optimum operating reliability
- Remote control and remote monitoring capability. Networkable
- Minimal heat gain, quiet ventilators fans

## APPLICATIONS

→ In combination with Fohhn loudspeaker systems, suitable for use in theatres, opera houses, churches, at concerts and live music events. Can also be used for delay lines, AV and industrial applications.

ARTICLE NUMBER

6005-00900

# D-4.1200 AMPLIFIER

DIGITAL MULTI-CHANNEL AMPLIFIER WITH INTEGRAL DSP TECHNOLOGY.

SOUND QUALITY. OPERATING RELIABILITY.  
INTELLIGENT CONTROL.



## → Integrated Fohhn Audio DSPs.

Dual DSP power guarantees excellent sound quality and maximum operating reliability. Fohhn's integrated DSP technology offers a range of options for system integration. The inclusion of two separate DSPs and an integral database containing details of all Fohhn loudspeakers makes our amplifiers unique.

The speaker database is based on an algorithm specially developed for each speaker. This protects bass, mid and high frequency drivers in all performance classes, guaranteeing outstanding sound and maximum operational reliability. The DSPs offer, on each channel, a range of programmable audio tools including 10-band parametric EQ, delay, compressor/limiter, noise gate and crossover, as well as temperature and performance monitoring. There is also a series of presets containing the necessary loudspeaker protection data and sound optimisation details for all Fohhn loudspeakers. This optimisation, together with the multiband limiting, enables maximum levels of performance and reliability to be achieved. Custom presets can also be created and stored.

With remarkable reductions in generated heat, incredibly low weight and compact dimensions combined with characteristically high levels of output power, this new Class D DSP amplifier is recommended for an unlimited range of applications.

## → Plug & Play

For mobile applications, the intuitive 4-line user display gives easy access to all DSP functions. The D-4.1200 runs very quietly due to temperature controlled ventilators and a precisely adjustable noise gate. The amplifier's multi-channel design saves having to connect and adapt external DSPs, EQs and crossovers. For small installations, projects can be realised quickly and reliably using a comparably simple microphone mixer.

## → Remote control/remotely monitoring

The D-4.1200 can be networked and remotely controlled via laptop from a mixing desk or production area. Multiple amplifiers can be networked and centrally controlled. The D-4.1200 can also be linked to a media control system, which can be used to switch between presets for different room settings for example.

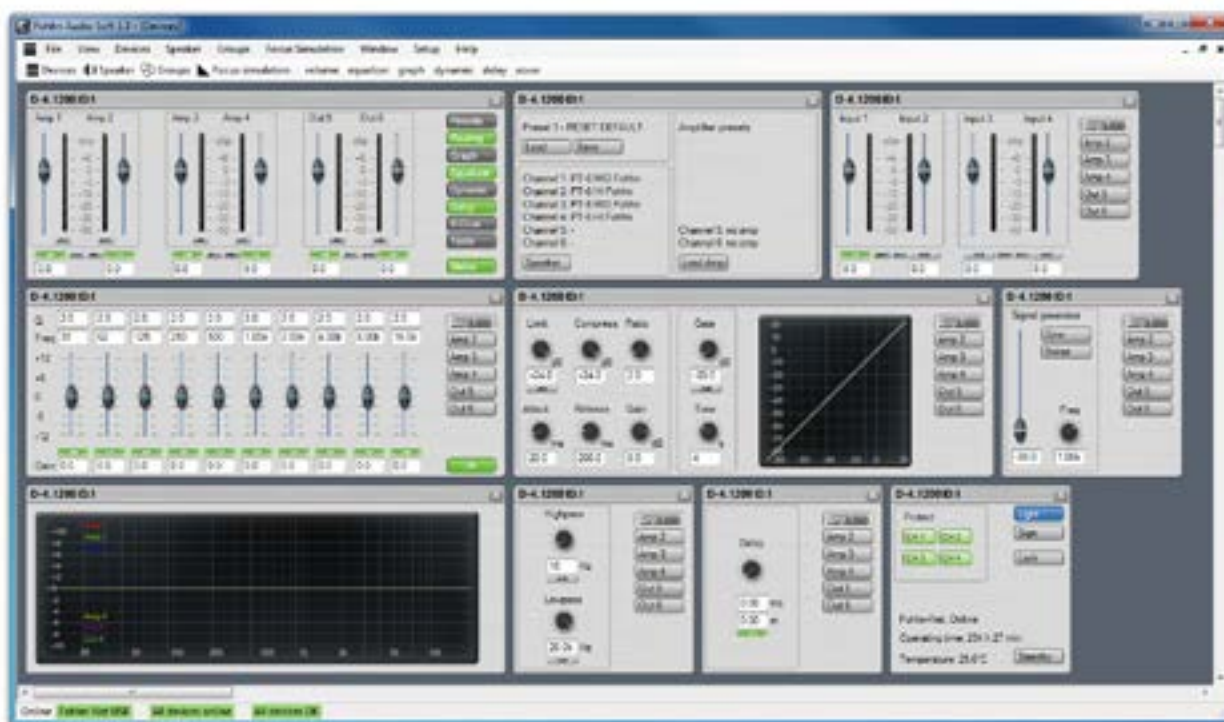
## → Fohhn® Mains Control.

### The integrated network monitoring system.

During use, the supply to the amplifier is constantly monitored. If at any time it exceeds the maximum permitted range (180-255 VAC), the supply will be interrupted. During power up it also minimizes the input surge current by switching on at the mains voltage zero crossing.

## → Accessories

Control software, USB adapter, Ethernet adapter


**Electro-acoustical features**

Amplifier technology	Class D
EIA amplifier power	4x 1200W/4 ohms 4x 750W/8 ohms (1 kHz, THD+N < 1%, 230 V mains)
Minimum impedance	4 ohms
Outputs	4 + 2 DSP
Inputs	4
DSP channels, Fohhn Audio DSP	6
Amplification	34 dB
Input sensitivity	1,4 V
Frequency response	20 Hz - 20 kHz
S/N Ratio	>105 dB/A
Protective circuit	switch-on delay, soft start impedance- and short-circuit
<b>Remote control</b>	Fohhn-Net, Fohhn Audio Soft
<b>Remote monitoring</b>	temperature, protect, signals
Power supply	AC 230V, 195 V - 250 V AC 50/60 Hz, switch mode power supply
Temperature range	0 - 45°C
Cooling	temperature-controlled fan
Weight	11,1 kg
Dimensions W x H x D	2HE, 88,9 x 483 x 380 mm

**Controller**

6 digital signal processors  
24 independent limiters  
selective 3-band limiting (bass/mid/high)  
band specific time constants  
56-bit double precision filter technology  
AD/DA 24 bit/48 kHz

**Controls**

Select potentiometer  
4 buttons for DSP handling  
Power on/off switch  
6 buttons for channel select

**Indicators**

4 line display  
12x Signal/Level LED  
4x Clip LED  
6x channel select LED  
1x ready LED  
1x over-temperature LED  
receive/send remote control LED

Dynamic range	110 dB, A-weighted 20Hz-20kHz
Propagation delay	< 0.65 ms
Calculation depth	56 bit
Inputs/outputs	electronically balanced
Input impedance	10 kOhm
Output impedance	100 Ohm
Input clipping Level	+15 dBu
Output clipping Level	+20 dBu
Internal clipping Level	+38 dBu
THD	THD < 0.002%, +3 dBu, 1kHz THD+N < 0.02%, +3 dBu, 20Hz-20kHz



SOUNDS PERFECT. IS PERFECT.



FOHNN® AWARDS.



## OUR LOVE OF DETAIL GOES FAR BEYOND THIS BROCHURE:

On our website you can find detailed product descriptions, technical data, accessories and full data sheets for download, along with 360° product views, user guides, PDF brochures, CAD drawings, 2D and 3D DWG files, Fohhn software, firmware updates, EASE and ULYSSES simulation data, references and much more.

Visit us at [www.fohhn.com](http://www.fohhn.com)



German quality  
engineered and made  
by Fohhn®

**Fohhn Audio AG**  
Hohes Gestade 3-7  
72622 Nürtingen  
Germany  
Tel. +49 7022 93323-0  
Fax +49 7022 93324-0  
[www.fohhn.com](http://www.fohhn.com)  
[info@fohhn.com](mailto:info@fohhn.com)